

CHIAPAS

## ---RED FEDERAL LIBRE---

1 Benemérito de Las Américas - Palenque	MEX-307
2 Catazajá - T. C. (Tuxtla Gtz. - Cd. Cuauhtémoc)	MEX-199-307
3 El Suspiro - Tenosique	MEX-203
4 Ent. Jaritas - Ciudad Hidalgo	MEX-225
5 Huixtla - El Jocote	MEX-211
6 La Trinitaria - Benemérito de Las Américas	MEX-307
7 Las Cruces - Arriaga	MEX-190
8 Libramiento de Arriaga	MEX-200
9 Libramiento de Ciudad Hidalgo Chis.	MEX-225
10 Libramiento de Huixtla	MEX-200
11 Libramiento de Ocozocoautla	MEX-190
12 Libramiento Sur de Tuxtla Gutiérrez (Dr. Manuel Velasco)	MEX-190
13 Malpaso - El Bellote	MEX-187
14 Ocozocoautla - Ent. El Sabino	MEX-190
15 Ramal a Cd. Hidalgo	MEX-200
16 Ramal a La Gloria	MEX-200
17 Ramal a Paredón	MEX-200
18 Ramal a Puerto Arista	MEX-200
19 Ramal a Unión Juárez	MEX-200
20 Tapachula - Puerto Madero	MEX-225
21 Tapanatepec - Talismán	MEX-200
22 Tapanatepec - Tuxtla Gutiérrez	MEX-190
23 Terán - Chicoasén	MEX-190
24 Tuxtla Gutiérrez - Angostura	MEX-190
25 Tuxtla Gutiérrez - Cd. Cuauhtémoc	MEX-190
26 Villahermosa - Escopetazo	MEX-195
27 Villahermosa - Francisco Escárcega	MEX-186-307

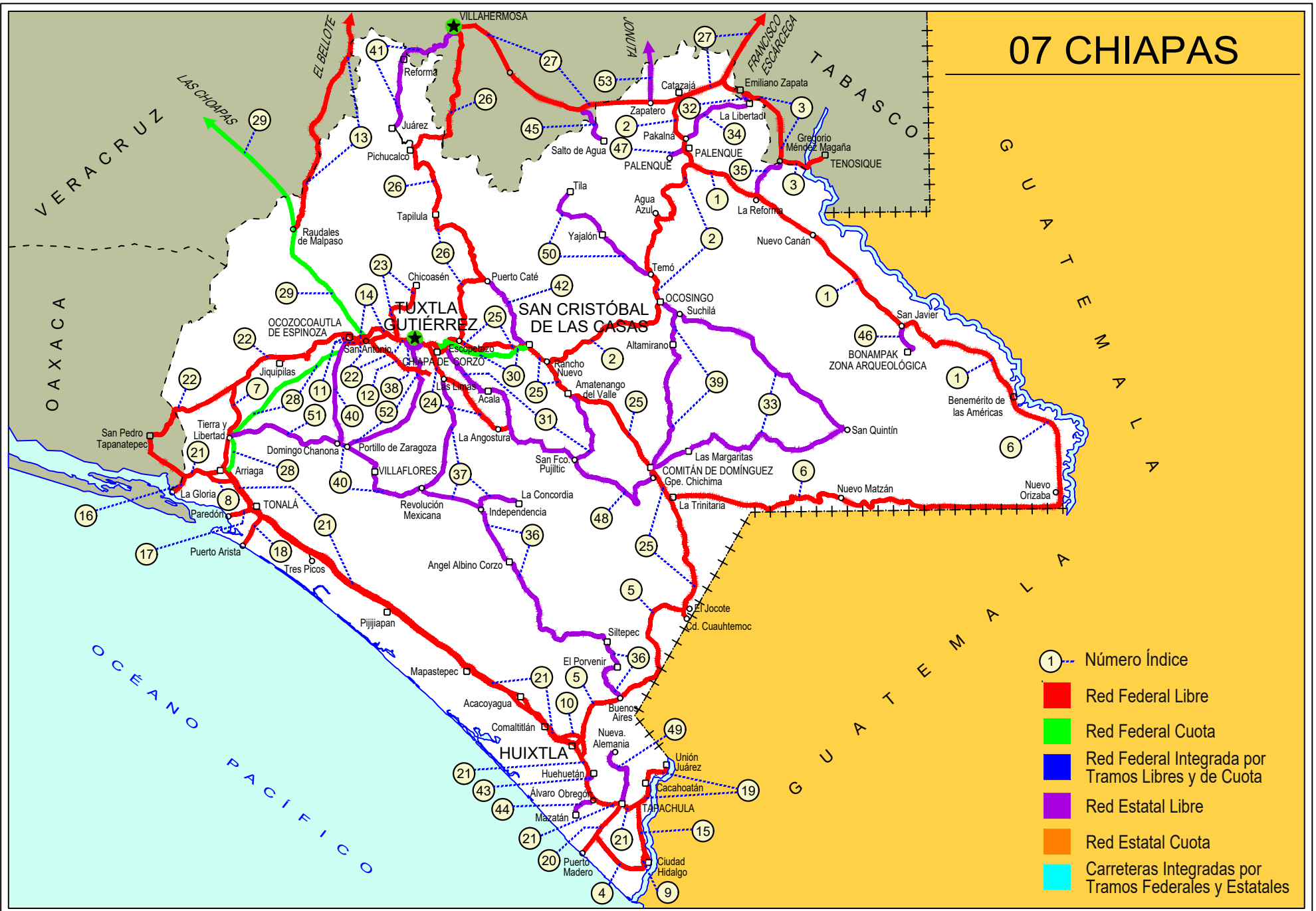
## ---RED FEDERAL DE CUOTA---

28 Arriaga - Ocozocoautla (Cuota)	MEX-200D
29 Las Choapas - Ocozocoautla (Cuota)	MEX-187D
30 Tuxtla Gutiérrez - San Cristóbal de Las Casas (Cuota)	MEX-190D

## ---RED ESTATAL LIBRE---

31 Chiapa de Corzo - Amatenango del Valle	CHIS
32 Ent. Emiliano Zapata - La Libertad	CHIS-TAB
33 Ent. Suschilá - Comitán	CHIS-TAB
34 Estación Palenque - La Libertad	CHIS-010
35 Gregorio Méndez Magaña - Reforma de Ocampo	CHIS
36 Independencia - Buenos Aires	CHIS
37 Las Limas - La Concordia	CHIS
38 Libramiento Sur de Tuxtla Gutiérrez	CHIS
39 Ocosingo - Comitán	CHIS
40 Ocozocoautla - Revolución Mexicana	CHIS-053-230
41 Paso de Cunduacán - Estación Juárez	TAB-CHIS
42 Puerto Caté - San Cristóbal de Las Casas	CHIS
43 Ramal a Huehuetán	CHIS
44 Ramal a Mazatán	CHIS-219
45 Ramal a Salto del Agua	TAB-CHIS
46 Ramal Zona Arqueológica " Bonampak "	CHIS
47 Ramal Zona Arqueológica " Palenque "	CHIS
48 San Francisco Pujilic - Ent. Comitán	CHIS
49 Tapachula - Nueva Alemania	CHIS-229
50 Temo - Tila	CHIS
51 Tierra y Libertad - Ent. Dr. Domingo Chanona	CHIS
52 Tuxtla Gutiérrez - Portillo Zaragoza	CHIS-133
53 Zapatero - T. C. (Jalapa - Jonuta)	CHIS-TAB

# 07 CHIAPAS





CHIAPAS

1 CARR: Benemérito de las Américas - Palenque

CLAVE: 07095

RUTA: MEX-307

AÑO: 2025

LUGAR	ESTACION				CLASIFICACION VEHICULAR EN PORCIENTO										COORDENADAS					
	KM	TE	SC	TDPA	M	A	B	C2	C3	T3S2	T3S3	T3S2R4	OTROS	A	B	C	K'	D	LATITUD	LONGITUD
Benemérito de las Américas	0.00																			
Frontera Corozal	42.00	3	0	1025	13.6	73.0	0.9	1.4	1.9	5.6	2.7	0.8	0.1	86.6	0.9	12.5	0.100	0.524	16.761473	-91.011655
San Javier	67.00	3	0	1302	9.4	77.9	1.0	1.3	1.1	6.0	1.7	1.5	0.1	87.3	1.0	11.7	0.081	0.509	16.802423	-91.107802
Reforma de Ocampo	160.00	1	0	2183	18.6	74.3	0.7	1.7	0.9	2.7	0.7	0.4	0.0	92.9	0.7	6.4	0.082	0.536	17.317260	-91.685183
T. C. Catazajá - T. C. (Tuxtla Gtz. - Cd. Cuauhtémoc)	194.00	1	0	5715	10.5	78.9	0.5	3.2	3.3	2.0	0.7	0.8	0.1	89.4	0.5	10.1	0.076	0.608	17.442319	-91.960437

2 CARR: Catazajá - T. C. (Tuxtla Gtz. - Cd. Cuauhtémoc)

CLAVE: 07582

RUTA: MEX-199-307

AÑO: 2025

LUGAR	ESTACION				CLASIFICACION VEHICULAR EN PORCIENTO										COORDENADAS					
	KM	TE	SC	TDPA	M	A	B	C2	C3	T3S2	T3S3	T3S2R4	OTROS	A	B	C	K'	D	LATITUD	LONGITUD
Catazajá	0.00																			
X. C. Villahermosa - Francisco Escárcega	0.22	3	0	5791	4.6	74.8	2.4	6.5	3.4	5.1	1.5	1.0	0.7	79.4	2.4	18.2	0.068	0.514	17.705397	-92.016038
Pakalná	22.26	1	0	14464	10.3	77.5	1.2	6.5	2.1	1.1	0.7	0.3	0.3	87.8	1.2	11.0	0.061	0.537	17.549642	-91.985156
T. Izq. Palenque	27.50	1	1	11203	17.5	72.8	1.2	5.4	1.4	0.8	0.3	0.5	0.1	90.3	1.2	8.5	0.083	0.560	17.531074	-91.991936
T. Izq. Palenque	27.50	1	2	11157	17.6	72.4	1.0	5.6	1.2	0.9	0.6	0.6	0.1	90.0	1.0	9.0	0.072	0.560	17.530988	-91.991864
T. Izq. Palenque	27.50	3	0	10937	11.5	75.4	0.9	7.0	2.3	1.4	0.6	0.4	0.5	86.9	0.9	12.2	0.072	0.516	17.486789	-91.978045
T. Izq. Bonampak	36.80	3	0	4376	2.1	85.5	1.4	5.5	1.0	2.0	1.7	0.1	0.7	87.6	1.4	11.0	0.077	0.732	17.444114	-91.965526
T. Der. Salto del Agua	57.60	1	0	2877	8.0	82.5	0.8	4.3	0.7	2.6	0.8	0.2	0.1	90.5	0.8	8.7	0.073	0.586	17.361882	-92.050896
T. Der. Agua Azul	85.60	1	0	1795	5.9	81.6	1.5	5.8	1.1	2.4	1.5	0.1	0.1	87.5	1.5	11.0	0.117	0.762	17.235572	-92.091633
T. Der. Chilón	125.75	1	0	2900	5.9	85.4	0.5	3.3	1.7	2.2	0.6	0.2	0.2	91.3	0.5	8.2	0.106	0.521	17.019261	-92.134780
T. Der. Chilón	125.75	3	0	3637	7.6	80.7	1.1	5.3	0.4	3.0	1.2	0.2	0.5	88.3	1.1	10.6	0.088	0.514	17.014517	-92.133625
Ocosingo	146.70	3	0	6064	19.7	75.1	0.8	2.0	0.7	0.8	0.2	0.6	0.1	94.8	0.8	4.4	0.080	0.552	16.891941	-92.104063
T. Izq. Altamirano	165.55	1	0	3666	9.3	85.2	0.8	1.6	1.1	1.0	0.5	0.4	0.1	94.5	0.8	4.7	0.083	0.614	16.816536	-92.170466
Huixtán	209.40	1	0	3796	5.1	88.3	1.0	2.5	1.3	1.0	0.4	0.4	0.0	93.4	1.0	5.6	0.085	0.567	16.717938	-92.447420
Huixtán	209.40	3	0	4673	5.3	87.7	0.8	2.1	1.8	1.0	0.9	0.3	0.1	93.0	0.8	6.2	0.079	0.526	16.706378	-92.463090
T. C. Tuxtla Gutiérrez - Cd. Cuauhtémoc	229.65	1	0	6662	14.0	77.7	0.7	4.8	1.1	0.8	0.3	0.4	0.2	91.7	0.7	7.6	0.079	0.572	16.669569	-92.559238

3 CARR: El Suspiro - Tenosique

CLAVE: 00276

RUTA: MEX-203

AÑO: 2025

LUGAR	ESTACION				CLASIFICACION VEHICULAR EN PORCIENTO										COORDENADAS					
	KM	TE	SC	TDPA	M	A	B	C2	C3	T3S2	T3S3	T3S2R4	OTROS	A	B	C	K'	D	LATITUD	LONGITUD
Ent. El Suspiro	0.00	3	0	6562	10.4	73.6	1.4	4.5	6.7	1.4	0.5	1.3	0.2	84.0	1.4	14.6	0.067	0.540	17.749504	-91.813448
Lim. Edos. Term. Chis. Ppia. Tab.	8.00																			
Emiliano Zapata	8.61	3	0	6334	10.5	77.4	1.0	5.1	2.1	2.0	0.7	0.6	0.6	87.9	1.0	11.1	0.079	0.518	17.727424	-91.756587
T. Der. La Libertad	12.10	3	0	3676	10.8	71.7	2.2	4.9	5.8	1.4	1.3	1.4	0.5	82.5	2.2	15.3	0.076	0.543	17.723804	-91.739477

CHIAPAS

3 CARR: El Suspiro - Tenosique

CLAVE: 00276

RUTA: MEX-203

AÑO: 2025

LUGAR	ESTACION				CLASIFICACION VEHICULAR EN PORCIENTO												COORDENADAS			
	KM	TE	SC	TDPA	M	A	B	C2	C3	T3S2	T3S3	T3S2R4	OTROS	A	B	C	K'	D	LATITUD	LONGITUD
T. Izq. Balancán	32.60	1	0	4056	5.6	76.2	4.9	7.1	1.4	1.9	1.3	1.2	0.4	81.8	4.9	13.3	0.087	0.632	17.633704	-91.602107
T. Izq. Balancán	32.60	3	0	2436	6.8	76.7	3.0	5.5	2.5	2.5	2.0	0.9	0.1	83.5	3.0	13.5	0.092	0.604	17.630612	-91.600875
Estación Zapata	53.00	1	0	2642	7.6	81.4	1.9	3.6	2.8	1.8	0.4	0.3	0.2	89.0	1.9	9.1	0.067	0.542	17.458836	-91.597922
Estación Zapata	53.00	3	0	3940	7.3	76.0	1.5	3.5	5.2	2.2	2.1	1.5	0.7	83.3	1.5	15.2	0.072	0.532	17.456396	-91.594855
Tenosique	75.30																			

4 CARR: Ent. Jaritas - Ciudad Hidalgo

CLAVE: 07094

RUTA: MEX-225

AÑO: 2025

LUGAR	ESTACION				CLASIFICACION VEHICULAR EN PORCIENTO												COORDENADAS			
	KM	TE	SC	TDPA	M	A	B	C2	C3	T3S2	T3S3	T3S2R4	OTROS	A	B	C	K'	D	LATITUD	LONGITUD
T. C. Tapachula - Puerto Madero	0.00	3	0	3182	25.3	60.7	1.4	4.1	1.9	4.8	1.2	0.5	0.1	86.0	1.4	12.6	0.087	0.576	14.783019	-92.364851
T. Der. Ignacio López Rayón	33.35	1	0	3644	18.2	70.5	1.7	4.0	2.1	2.9	0.4	0.2	0.0	88.7	1.7	9.6	0.087	0.652	14.630465	-92.190588
Ciudad Hidalgo	49.00	1	0	10253	15.5	67.2	2.5	6.6	1.5	4.0	0.8	1.3	0.6	82.7	2.5	14.8	0.092	0.542	14.672916	-92.161029

5 CARR: Huixtla - El Jocote

CLAVE: 07577

RUTA: MEX-211

AÑO: 2025

LUGAR	ESTACION				CLASIFICACION VEHICULAR EN PORCIENTO												COORDENADAS			
	KM	TE	SC	TDPA	M	A	B	C2	C3	T3S2	T3S3	T3S2R4	OTROS	A	B	C	K'	D	LATITUD	LONGITUD
Huixtla	0.00	3	0	3283	16.5	70.8	1.7	5.3	2.0	2.0	1.2	0.4	0.1	87.3	1.7	11.0	0.083	0.513	15.148598	-92.443937
B. Domínguez (Loma Bonita)	27.00	3	0	2848	14.0	72.6	1.9	5.8	1.7	2.4	1.1	0.4	0.1	86.6	1.9	11.5	0.079	0.529	15.305071	-92.375593
Motozintla	57.00	1	0	3685	18.1	70.0	1.4	4.0	1.8	3.0	1.2	0.4	0.1	88.1	1.4	10.5	0.084	0.521	15.355990	-92.252161
Motozintla	57.00	3	0	6768	19.3	69.6	0.8	4.1	0.9	3.2	1.0	1.0	0.1	88.9	0.8	10.3	0.067	0.522	15.371957	-92.233396
Amatenango de La Frontera	77.00	1	0	1392	9.5	80.1	2.4	3.4	2.0	1.9	0.6	0.1	0.0	89.6	2.4	8.0	0.098	0.562	15.433555	-92.119090
Amatenango de La Frontera	77.00	3	0	1682	5.8	79.2	1.7	6.4	2.1	2.9	1.6	0.2	0.1	85.0	1.7	13.3	0.084	0.521	15.439210	-92.113727
Frontera Comalapa	108.00	1	0	6639	19.4	69.1	0.5	3.5	0.8	4.7	1.2	0.5	0.3	88.5	0.5	11.0	0.082	0.549	15.642491	-92.144982
El Jocote	126.00	1	0	5449	15.1	75.0	0.9	3.3	0.8	3.5	0.7	0.4	0.3	90.1	0.9	9.0	0.100	0.521	15.684144	-92.006596

6 CARR: La Trinitaria - Benemérito de Las Américas

CLAVE: 07267

RUTA: MEX-307

AÑO: 2025

LUGAR	ESTACION				CLASIFICACION VEHICULAR EN PORCIENTO												COORDENADAS			
	KM	TE	SC	TDPA	M	A	B	C2	C3	T3S2	T3S3	T3S2R4	OTROS	A	B	C	K'	D	LATITUD	LONGITUD
T. C. Tuxtla Gutiérrez - Cd. Cuauhtémoc	0.00	3	0	6061	9.4	82.7	0.8	4.5	1.1	0.6	0.2	0.5	0.2	92.1	0.8	7.1	0.103	0.510	16.130072	-92.062082
Santa Rita	10.00	1	0	4759	5.2	86.3	0.9	5.8	0.8	0.5	0.4	0.1	0.0	91.5	0.9	7.6	0.095	0.568	16.139688	-91.986903
Santa Rita	10.00	3	0	4808	8.9	83.8	0.6	5.1	0.8	0.5	0.2	0.1	0.0	92.7	0.6	6.7	0.094	0.540	16.140634	-91.969546
T. Izq. La Independencia	20.00	3	0	4928	9.8	85.4	0.9	2.2	0.6	0.5	0.3	0.3	0.0	95.2	0.9	3.9	0.101	0.502	16.126480	-91.847904

CHIAPAS

6 CARR: La Trinitaria - Benemérito de Las Américas

CLAVE: 07267

RUTA: MEX-307

AÑO: 2025

LUGAR	ESTACION				CLASIFICACION VEHICULAR EN PORCIENTO										COORDENADAS					
	KM	TE	SC	TDPA	M	A	B	C2	C3	T3S2	T3S3	T3S2R4	OTROS	A	B	C	K'	D	LATITUD	LONGITUD
Montebello	39.76	1	0	1901	7.3	82.2	1.9	6.2	1.4	0.6	0.3	0.1	0.0	89.5	1.9	8.6	0.113	0.561	16.101022	-91.742511
Montebello	39.76	3	0	1490	6.9	89.0	1.1	1.9	0.7	0.2	0.1	0.1	0.0	95.9	1.1	3.0	0.127	0.630	16.101176	-91.730862
Nuevo San Juan Chamula	72.00	3	0	2277	24.5	71.3	0.4	1.2	2.1	0.3	0.1	0.1	0.0	95.8	0.4	3.8	0.099	0.509	16.144692	-91.437261
Benemérito de las Américas	268.00																			
Benemérito de las Américas	268.00	1	0	3603	13.3	81.9	0.6	1.0	0.7	1.2	0.8	0.5	0.0	95.2	0.6	4.2	0.079	0.507	16.496978	-90.653419

7 CARR: Las Cruces - Arriaga

CLAVE: 07196

RUTA: MEX-190

AÑO: 2025

LUGAR	ESTACION				CLASIFICACION VEHICULAR EN PORCIENTO										COORDENADAS					
	KM	TE	SC	TDPA	M	A	B	C2	C3	T3S2	T3S3	T3S2R4	OTROS	A	B	C	K'	D	LATITUD	LONGITUD
Las Cruces	0.00	3	0	1883	9.6	80.9	0.7	4.8	2.2	0.8	0.6	0.4	0.0	90.5	0.7	8.8	0.087	0.521	16.568509	-93.844577
Santa Isabel	27.90	3	0	386	18.4	79.0	0.4	1.0	0.7	0.1	0.2	0.2	0.0	97.4	0.4	2.2	0.111	0.512	16.345356	-93.872025
Arriaga	49.00	1	0	1465	34.4	62.9	0.3	1.5	0.7	0.1	0.1	0.0	0.0	97.3	0.3	2.4	0.115	0.536	16.247862	-93.886151

8 CARR: Libramiento de Arriaga

CLAVE:

RUTA: MEX-200

AÑO: 2025

LUGAR	ESTACION				CLASIFICACION VEHICULAR EN PORCIENTO										COORDENADAS					
	KM	TE	SC	TDPA	M	A	B	C2	C3	T3S2	T3S3	T3S2R4	OTROS	A	B	C	K'	D	LATITUD	LONGITUD
T. C. Tapanatepec - Talismán	0.00	3	0	3213	7.1	56.7	3.6	7.0	3.0	9.9	4.0	7.8	0.9	63.8	3.6	32.6	0.068	0.571	16.220358	-93.925232
T. Der. Villa del Mar	2.60	1	0	2776	6.3	55.2	3.9	6.2	2.6	13.1	4.3	7.4	1.0	61.5	3.9	34.6	0.079	0.518	16.209340	-93.913917
T. Der. Villa del Mar	2.60	3	0	2418	6.1	54.1	3.6	7.6	4.3	10.5	4.8	8.1	0.9	60.2	3.6	36.2	0.096	0.524	16.208754	-93.897998
T. C. Tapanatepec - Talismán	7.50	1	0	2957	5.7	56.0	4.3	5.9	3.4	12.8	3.7	7.4	0.8	61.7	4.3	34.0	0.075	0.552	16.215560	-93.879475

9 CARR: Libramiento de Ciudad Hidalgo Chis.

CLAVE:

RUTA: MEX-225

AÑO: 2025

LUGAR	ESTACION				CLASIFICACION VEHICULAR EN PORCIENTO										COORDENADAS					
	KM	TE	SC	TDPA	M	A	B	C2	C3	T3S2	T3S3	T3S2R4	OTROS	A	B	C	K'	D	LATITUD	LONGITUD
T. C. Ramal a Ciudad Hidalgo	0.00																			
T. C. Ent. Jaritas - Ciudad Hidalgo	5.00	3	0	4684	26.1	43.6	1.2	2.7	4.5	18.0	1.9	1.5	0.5	69.7	1.2	29.1	0.091	0.554	14.677445	-92.169154

10 CARR: Libramiento de Huixtla

CLAVE:

RUTA: MEX-200

AÑO: 2025

LUGAR	ESTACION				CLASIFICACION VEHICULAR EN PORCIENTO										COORDENADAS					
	KM	TE	SC	TDPA	M	A	B	C2	C3	T3S2	T3S3	T3S2R4	OTROS	A	B	C	K'	D	LATITUD	LONGITUD
T. C. Tapanatepec - Talismán	0.00	3	1	4131	6.3	71.2	4.2	4.7	2.1	6.2	1.5	2.9	0.9	77.5	4.2	18.3	0.087	0.582	15.161149	-92.487576

CHIAPAS

10 CARR: Libramiento de Huixtla

CLAVE:

RUTA: MEX-200

AÑO: 2025

LUGAR	ESTACION				CLASIFICACION VEHICULAR EN PORCIENTO													COORDENADAS		
	KM	TE	SC	TDPA	M	A	B	C2	C3	T3S2	T3S3	T3S2R4	OTROS	A	B	C	K'	D	LATITUD	LONGITUD
T. C. Tapanatepec - Talismán	0.00	3	2	3960	6.5	71.4	4.0	5.1	2.1	6.4	1.1	2.7	0.7	77.9	4.0	18.1	0.086	0.582	15.161199	-92.487651
T. C. Huixtla - El Jocote	5.80	1	1	4026	6.4	71.8	3.2	4.7	1.6	7.5	1.3	2.8	0.7	78.2	3.2	18.6	0.079	0.555	15.154130	-92.454805
T. C. Huixtla - El Jocote	5.80	1	2	3848	6.5	71.2	2.8	4.5	1.9	7.8	1.2	3.2	0.9	77.7	2.8	19.5	0.094	0.555	15.154193	-92.454750
T. C. Huixtla - El Jocote	5.80	3	1	4777	5.2	73.2	3.1	4.8	1.8	6.4	2.0	2.8	0.7	78.4	3.1	18.5	0.079	0.534	15.142312	-92.447839
T. C. Huixtla - El Jocote	5.80	3	2	4186	5.4	74.0	2.6	4.2	2.0	6.6	1.9	2.6	0.7	79.4	2.6	18.0	0.088	0.534	15.142399	-92.447745
T. C. Tapanatepec - Talismán	7.07																			

11 CARR: Libramiento de Ocozocoautla

CLAVE: 07583

RUTA: MEX-190

AÑO: 2025

LUGAR	ESTACION				CLASIFICACION VEHICULAR EN PORCIENTO													COORDENADAS		
	KM	TE	SC	TDPA	M	A	B	C2	C3	T3S2	T3S3	T3S2R4	OTROS	A	B	C	K'	D	LATITUD	LONGITUD
T. C. Tapanatepec - Tuxtla Gutiérrez	0.00	3	0	10860	7.7	79.8	1.2	6.6	2.3	1.3	0.3	0.6	0.2	87.5	1.2	11.3	0.122	0.508	16.762016	-93.384389
T. C. Arriaga - Ocozocoautla (Cuota)	5.54	1	0	10533	7.6	79.5	1.4	6.1	2.0	1.7	0.5	0.9	0.3	87.1	1.4	11.5	0.097	0.619	16.748905	-93.377301
T. C. Arriaga - Ocozocoautla (Cuota)	5.54	3	1	5971	4.6	78.1	3.3	5.0	2.0	3.6	1.2	1.7	0.5	82.7	3.3	14.0	0.100	0.604	16.735430	-93.353900
T. C. Arriaga - Ocozocoautla (Cuota)	5.54	3	2	5924	4.4	79.6	2.8	5.3	1.7	3.1	0.9	1.7	0.5	84.0	2.8	13.2	0.101	0.604	16.735512	-93.353910
T. C. Tapanatepec - Tuxtla Gutiérrez	9.00	1	0	13946	3.4	80.1	2.3	4.2	2.3	3.8	0.9	2.3	0.7	83.5	2.3	14.2	0.075	0.516	16.745862	-93.341267

12 CARR: Libramiento Sur de Tuxtla Gutierrez (Dr. Manuel Velasco)

CLAVE:

RUTA: MEX-190

AÑO: 2025

LUGAR	ESTACION				CLASIFICACION VEHICULAR EN PORCIENTO													COORDENADAS		
	KM	TE	SC	TDPA	M	A	B	C2	C3	T3S2	T3S3	T3S2R4	OTROS	A	B	C	K'	D	LATITUD	LONGITUD
Ent C. (Ocozocoautla - Ent. el Sabino)	0.00	3	0	4446	4.2	73.5	3.3	2.9	2.6	6.9	2.6	3.2	0.8	77.7	3.3	19.0	0.065	0.531	16.758352	-93.301188
X. C. Terán - El Nuevo Triunfo	15.94	3	0	6202	4.2	78.9	2.0	3.2	2.3	4.5	1.8	2.4	0.7	83.1	2.0	14.9	0.077	0.505	16.693641	-93.175177
Tuxtla Gutiérrez - Portillo Zaragoza	22.10	3	0	5179	3.8	76.5	2.7	3.2	2.3	5.3	2.4	3.0	0.8	80.3	2.7	17.0	0.073	0.511	16.637276	-93.086169
T. C. Ramal a Aeropuerto Inter. Angel Albino Corzo	36.00																			

13 CARR: Malpaso - El Bellote

CLAVE: 00137

RUTA: MEX-187

AÑO: 2025

LUGAR	ESTACION				CLASIFICACION VEHICULAR EN PORCIENTO													COORDENADAS		
	KM	TE	SC	TDPA	M	A	B	C2	C3	T3S2	T3S3	T3S2R4	OTROS	A	B	C	K'	D	LATITUD	LONGITUD
Presa Malpaso	0.00																			
X. C. Las Choapas - Ocozocoautla Cuota	15.50	1	0	410	37.7	54.2	0.5	3.9	3.5	0.0	0.1	0.1	0.0	91.9	0.5	7.6	0.110	0.578	17.248680	-93.563727
Lim. Edos. Term. Chis. Ppia. Tab.	43.99																			
Lim. Edos. Term. Tab. Ppia. Chis.	44.59																			
Lim. Edos. Term. Chis. Ppia. Tab.	45.26																			

CHIAPAS

13 CARR: Malpaso - El Bellote

CLAVE: 00137

RUTA: MEX-187

AÑO: 2025

LUGAR	ESTACION				CLASIFICACION VEHICULAR EN PORCIENTO										COORDENADAS						
	KM	TE	SC	TDPA	M	A	B	C2	C3	T3S2	T3S3	T3S2R4	OTROS	A	B	C	K'	D	LATITUD	LONGITUD	
Lim. Edos. Term. Tab. Ppia. Chis.	45.63																				
T. Der. Pichucalco	51.80	3	0	714	32.1	58.5	1.0	5.0	2.3	0.6	0.3	0.2	0.0	90.6	1.0	8.4	0.245	0.594	17.476355	-93.503486	
Lim. Edos. Term. Chis. Ppia. Tab.	55.04																				
Entronque Grano de Oro	65.60	1	0	1719	29.5	64.3	1.1	3.4	0.6	0.7	0.3	0.1	0.0	93.8	1.1	5.1	0.143	0.500	17.588349	-93.531370	
Macabil (La Estrella)	70.12	1	0	4698	14.5	73.2	2.7	4.3	1.4	2.7	0.7	0.4	0.1	87.7	2.7	9.6	0.089	0.504	17.605158	-93.518837	
Estación Chontalpa	75.69	1	0	6176	15.9	73.0	2.2	4.7	1.6	1.4	0.5	0.5	0.2	88.9	2.2	8.9	0.079	0.538	17.647557	-93.488843	
Estación Chontalpa	75.69	3	0	7889	12.5	77.6	1.9	4.2	1.2	1.4	0.4	0.7	0.1	90.1	1.9	8.0	0.077	0.520	17.675820	-93.476012	
T. Izq. Francisco Rueda	90.49	1	0	7558	11.7	77.0	1.9	5.4	1.2	1.7	0.4	0.6	0.1	88.7	1.9	9.4	0.083	0.588	17.786975	-93.439544	
T. Izq. Francisco Rueda	90.49	3	0	10329	14.4	78.5	1.3	2.3	0.8	1.7	0.5	0.4	0.1	92.9	1.3	5.8	0.085	0.563	17.793193	-93.432074	
Huimanguillo	98.03	1	1	7608	13.7	78.1	1.8	2.5	1.1	1.4	0.6	0.6	0.2	91.8	1.8	6.4	0.081	0.529	17.819019	-93.401796	
Huimanguillo	98.03	1	2	7910	14.4	77.8	1.6	2.8	0.9	1.1	0.4	0.7	0.3	92.2	1.6	6.2	0.078	0.529	17.819077	-93.401875	
Huimanguillo	98.03	3	1	7250	14.4	77.6	1.8	2.6	1.2	1.3	0.5	0.3	0.3	92.0	1.8	6.2	0.088	0.507	17.853030	-93.397045	
Huimanguillo	98.03	3	2	7342	14.3	77.2	2.1	3.0	0.9	1.2	0.5	0.5	0.3	91.5	2.1	6.4	0.094	0.507	17.853043	-93.397130	
Cárdenas	117.56	1	0	17620	13.3	79.2	1.0	2.8	1.1	1.5	0.5	0.4	0.2	92.5	1.0	6.5	0.085	0.501	17.943906	-93.362740	
Cárdenas	117.56	3	0	19258	14.2	76.8	1.0	4.5	0.9	1.2	0.6	0.5	0.3	91.0	1.0	8.0	0.078	0.551	18.016597	-93.368623	
Tulipán	134.70	3	0	11063	6.9	79.2	1.5	6.9	1.0	2.7	1.2	0.3	0.3	86.1	1.5	12.4	0.082	0.503	18.127727	-93.290236	
T. Der. Conduacán	141.70	1	0	10299	6.2	78.9	1.5	8.2	1.3	2.5	1.0	0.3	0.1	85.1	1.5	13.4	0.079	0.593	18.140282	-93.271341	
T. Der. Conduacán	141.70	3	0	7706	6.4	80.4	1.4	7.9	1.1	1.8	0.8	0.2	0.0	86.8	1.4	11.8	0.091	0.606	18.145491	-93.267682	
T. Der. Jalpa	153.50	1	0	15475	10.6	76.4	1.3	7.3	1.2	1.2	1.0	0.5	0.5	87.0	1.3	11.7	0.078	0.580	18.241577	-93.210411	
T. Der. Jalpa	153.50	3	1	13045	10.1	79.3	1.2	6.1	0.9	0.6	0.9	0.5	0.4	89.4	1.2	9.4	0.084	0.564	18.249012	-93.213565	
T. Der. Jalpa	153.50	3	2	12806	10.3	79.2	1.4	5.9	1.1	0.5	0.8	0.5	0.3	89.5	1.4	9.1	0.091	0.564	18.248939	-93.213638	
Paraíso	176.85	1	1	17346	6.0	88.1	1.2	3.1	0.8	0.3	0.1	0.2	0.2	94.1	1.2	4.7	0.130	0.691	18.377641	-93.221899	
Paraíso	176.85	1	2	17635	5.9	88.3	1.3	3.1	0.7	0.4	0.1	0.1	0.1	94.2	1.3	4.5	0.111	0.691	18.377647	-93.221975	
Paraíso	176.85	3	1	15219	10.0	78.3	1.1	5.4	1.9	1.8	0.7	0.5	0.3	88.3	1.1	10.6	0.100	0.623	18.410005	-93.195866	
Paraíso	176.85	3	2	15329	10.1	78.2	1.2	5.6	2.1	1.3	0.6	0.5	0.4	88.3	1.2	10.5	0.082	0.623	18.410025	-93.195959	
Ceiba	182.00	3	0	13047	10.5	77.7	0.5	3.4	1.4	3.9	1.2	0.6	0.8	88.2	0.5	11.3	0.079	0.530	18.422622	-93.163265	
El Bellote	185.47																				

14 CARR: Ocozocoautla - Ent. El Sabino

CLAVE: 07579

RUTA: MEX-190

AÑO: 2025

LUGAR	ESTACION				CLASIFICACION VEHICULAR EN PORCIENTO										COORDENADAS						
	KM	TE	SC	TDPA	M	A	B	C2	C3	T3S2	T3S3	T3S2R4	OTROS	A	B	C	K'	D	LATITUD	LONGITUD	
T. C. Tapanatepec - Tuxtla Gutiérrez	0.00																				
X. C. Tapanatepec - Tuxtla Gutiérrez	7.85	3	0	7467	7.6	80.1	1.6	7.7	0.7	1.6	0.2	0.2	0.3	87.7	1.6	10.7	0.084	0.534	16.772642	-93.284169	
T. C. Tapanatepec - Tuxtla Gutiérrez	18.25	1	0	11250	4.5	86.2	0.5	6.9	0.3	0.7	0.5	0.2	0.2	90.7	0.5	8.8	0.082	0.523	16.776118	-93.207179	

CHIAPAS

15 CARR: Ramal a Cd. Hidalgo

CLAVE: 07274

RUTA: MEX-200

AÑO: 2025

LUGAR	ESTACION				CLASIFICACION VEHICULAR EN PORCIENTO													COORDENADAS		
	KM	TE	SC	TDPA	M	A	B	C2	C3	T3S2	T3S3	T3S2R4	OTROS	A	B	C	K'	D	LATITUD	LONGITUD
T. C. Tapanatepec - Talismán	0.00	3	0	11324	4.5	85.5	0.8	3.1	0.9	2.9	0.3	1.6	0.4	90.0	0.8	9.2	0.076	0.563	14.912835	-92.191930
T. Izq Paso por Metapa de Dominguez Norte	6.80	3	0	6883	8.8	77.3	1.0	2.9	1.1	5.8	0.7	1.9	0.5	86.1	1.0	12.9	0.088	0.644	14.850661	-92.194811
Metapa de Dominguez	9.00	3	0	8968	4.5	82.3	1.3	2.7	1.4	4.6	0.7	2.0	0.5	86.8	1.3	11.9	0.083	0.543	14.805604	-92.189350
Frontera Hidalgo	15.30	3	0	8920	4.9	83.8	1.0	2.8	1.0	4.4	0.4	1.3	0.4	88.7	1.0	10.3	0.081	0.532	14.761535	-92.175824
T. C. Libramiento de Ciudad de Hidalgo	23.80	1	0	9579	6.6	81.2	1.5	2.9	0.9	4.6	0.5	1.4	0.4	87.8	1.5	10.7	0.081	0.528	14.718826	-92.162131
Cd. Hidalgo	27.00	1	0	8815	6.4	87.5	0.8	2.3	0.9	1.5	0.2	0.3	0.1	93.9	0.8	5.3	0.087	0.529	14.694746	-92.154366

16 CARR: Ramal a La Gloria

CLAVE: 07091

RUTA: MEX-200

AÑO: 2025

LUGAR	ESTACION				CLASIFICACION VEHICULAR EN PORCIENTO													COORDENADAS		
	KM	TE	SC	TDPA	M	A	B	C2	C3	T3S2	T3S3	T3S2R4	OTROS	A	B	C	K'	D	LATITUD	LONGITUD
T. C. Tapanatepec - Talismán	0.00	3	0	1514	30.8	63.7	0.4	3.0	0.6	1.2	0.2	0.1	0.0	94.5	0.4	5.1	0.086	0.569	16.210712	-94.048954
La Gloria	6.00																			

17 CARR: Ramal a Paredón

CLAVE: 07269

RUTA: MEX-200

AÑO: 2025

LUGAR	ESTACION				CLASIFICACION VEHICULAR EN PORCIENTO													COORDENADAS		
	KM	TE	SC	TDPA	M	A	B	C2	C3	T3S2	T3S3	T3S2R4	OTROS	A	B	C	K'	D	LATITUD	LONGITUD
T. C. Tapanatepec - Talismán	0.00	3	0	6392	21.2	69.9	0.2	4.6	1.0	2.0	0.7	0.1	0.3	91.1	0.2	8.7	0.099	0.521	16.079631	-93.778878
Paredón	14.00																			

18 CARR: Ramal a Puerto Arista

CLAVE: 07270

RUTA: MEX-200

AÑO: 2025

LUGAR	ESTACION				CLASIFICACION VEHICULAR EN PORCIENTO													COORDENADAS		
	KM	TE	SC	TDPA	M	A	B	C2	C3	T3S2	T3S3	T3S2R4	OTROS	A	B	C	K'	D	LATITUD	LONGITUD
T. C. Tapanatepec - Talismán	0.00	3	0	5014	11.6	78.1	0.4	3.2	0.4	3.6	1.8	0.2	0.7	89.7	0.4	9.9	0.092	0.585	16.052135	-93.736743
T. Der. Paredón	11.00	3	0	4038	11.8	78.3	0.1	3.1	0.4	4.3	1.2	0.2	0.6	90.1	0.1	9.8	0.095	0.517	15.974313	-93.775136
Puerto Arista	17.00	1	0	3061	26.4	66.1	0.2	3.5	0.5	1.8	1.4	0.1	0.0	92.5	0.2	7.3	0.116	0.668	15.942519	-93.798823

19 CARR: Ramal a Unión Juárez

CLAVE: 07273

RUTA: MEX-200

AÑO: 2025

LUGAR	ESTACION				CLASIFICACION VEHICULAR EN PORCIENTO													COORDENADAS		
	KM	TE	SC	TDPA	M	A	B	C2	C3	T3S2	T3S3	T3S2R4	OTROS	A	B	C	K'	D	LATITUD	LONGITUD
T. C. Tapanatepec - Talismán	0.00																			
Cacahoatán	5.00	1	0	8918	6.4	88.3	0.3	4.2	0.5	0.2	0.0	0.1	0.0	94.7	0.3	5.0	0.092	0.523	14.982543	-92.156969

CHIAPAS

19 CARR: Ramal a Unión Juárez

CLAVE: 07273

RUTA: MEX-200

AÑO: 2025

LUGAR	ESTACION				CLASIFICACION VEHICULAR EN PORCIENTO													COORDENADAS		
	KM	TE	SC	TDPA	M	A	B	C2	C3	T3S2	T3S3	T3S2R4	OTROS	A	B	C	K'	D	LATITUD	LONGITUD
Unión Juárez	22.00	1	0	1797	5.6	88.1	0.5	3.1	1.6	0.7	0.2	0.2	0.0	93.7	0.5	5.8	0.085	0.510	15.055973	-92.080559

20 CARR: Tapachula - Puerto Madero

CLAVE: 07018

RUTA: MEX-225

AÑO: 2025

LUGAR	ESTACION				CLASIFICACION VEHICULAR EN PORCIENTO													COORDENADAS		
	KM	TE	SC	TDPA	M	A	B	C2	C3	T3S2	T3S3	T3S2R4	OTROS	A	B	C	K'	D	LATITUD	LONGITUD
Tapachula	0.00	3	1	10711	6.3	86.3	0.7	4.3	1.0	0.7	0.1	0.4	0.2	92.6	0.7	6.7	0.122	0.674	14.869354	-92.289397
Tapachula	0.00	3	2	9460	6.2	86.2	0.7	4.2	1.1	0.9	0.2	0.4	0.1	92.4	0.7	6.9	0.101	0.674	14.868184	-92.290077
T. Der. Aeropuerto	14.50	3	1	4735	10.1	81.3	1.1	2.7	1.6	1.8	0.6	0.6	0.2	91.4	1.1	7.5	0.109	0.639	14.786608	-92.366453
T. Der. Aeropuerto	14.50	3	2	4725	10.1	81.2	1.2	2.5	1.8	2.0	0.5	0.5	0.2	91.3	1.2	7.5	0.102	0.639	14.786561	-92.366393
Puerto Madero	27.00	1	0	9821	36.2	60.8	0.4	1.1	0.8	0.4	0.2	0.1	0.0	97.0	0.4	2.6	0.085	0.613	14.721371	-92.420230

21 CARR: Tapanatepec - Talismán

CLAVE: 00075

RUTA: MEX-200

AÑO: 2025

LUGAR	ESTACION				CLASIFICACION VEHICULAR EN PORCIENTO													COORDENADAS		
	KM	TE	SC	TDPA	M	A	B	C2	C3	T3S2	T3S3	T3S2R4	OTROS	A	B	C	K'	D	LATITUD	LONGITUD
Tapanatepec	0.00	3	0	5787	9.1	68.8	2.6	4.4	2.8	5.4	1.9	4.0	1.0	77.9	2.6	19.5	0.076	0.583	16.344974	-94.190602
Lim. Edos. Term. Oax. Ppia. Chis.	25.90																			
T. Der. Emiliano Zapata	26.20	1	0	3657	7.0	61.3	4.0	5.4	3.4	8.8	2.8	6.3	1.0	68.3	4.0	27.7	0.072	0.530	16.217015	-94.051553
T. Der. Emiliano Zapata	26.20	3	0	4173	7.3	62.7	3.3	7.3	2.0	8.3	2.1	6.1	0.9	70.0	3.3	26.7	0.074	0.537	16.214692	-94.039958
T. C. Libramiento de Arriaga	41.00	3	0	5678	8.3	69.9	2.6	3.2	4.7	5.9	1.6	3.0	0.8	78.2	2.6	19.2	0.081	0.514	16.224890	-93.925463
Arriaga	45.00	1	0	5997	8.4	67.3	3.0	2.9	4.9	5.9	2.3	4.2	1.1	75.7	3.0	21.3	0.075	0.565	16.221882	-93.936532
Arriaga	45.00	3	1	4304	17.9	70.9	2.5	5.9	1.3	0.7	0.4	0.3	0.1	88.8	2.5	8.7	0.074	0.538	16.237366	-93.882918
Arriaga	45.00	3	2	4958	17.6	72.0	2.1	5.9	1.3	0.5	0.3	0.3	0.0	89.6	2.1	8.3	0.075	0.538	16.238918	-93.883246
X. C. Arriaga- Ocozacoautla (Cuota)	47.00	3	1	4593	9.9	73.7	3.3	4.9	1.6	3.5	0.8	1.9	0.4	83.6	3.3	13.1	0.075	0.564	16.228340	-93.872112
X. C. Arriaga- Ocozacoautla (Cuota)	47.00	3	2	5197	9.8	73.8	3.6	5.2	1.4	3.3	0.8	1.7	0.4	83.6	3.6	12.8	0.084	0.564	16.232896	-93.876300
T. Der. Libramiento de Arriaga	49.50	1	1	5048	8.2	76.0	3.8	3.5	1.7	3.6	0.9	1.9	0.4	84.2	3.8	12.0	0.073	0.547	16.222761	-93.867490
T. Der. Libramiento de Arriaga	49.50	1	2	4358	8.2	75.7	3.9	3.6	1.7	3.5	0.9	2.0	0.5	83.9	3.9	12.2	0.078	0.547	16.222832	-93.867395
T. Der. Libramiento de Arriaga	49.50	3	1	5543	8.1	72.3	3.6	4.0	2.1	5.6	1.2	2.6	0.5	80.4	3.6	16.0	0.080	0.561	16.209178	-93.856202
T. Der. Libramiento de Arriaga	49.50	3	2	4796	8.2	71.4	3.6	4.2	2.0	5.9	1.2	2.7	0.8	79.6	3.6	16.8	0.099	0.561	16.209260	-93.856108
Acceso a Tonalá	65.60	1	1	6284	6.5	71.5	3.3	7.0	2.2	5.8	1.2	2.0	0.5	78.0	3.3	18.7	0.083	0.511	16.116780	-93.790041
Acceso a Tonalá	65.60	1	2	6205	6.4	70.7	3.5	7.2	2.4	6.2	1.0	2.1	0.5	77.1	3.5	19.4	0.081	0.511	16.116842	-93.789928
X. C. Ramal a Paredón	68.60	1	1	4609	5.8	72.1	3.0	5.3	2.7	6.6	1.5	2.4	0.6	77.9	3.0	19.1	0.087	0.541	16.082609	-93.770850
X. C. Ramal a Paredón	68.60	1	2	5179	5.9	72.9	3.1	5.5	2.5	6.2	1.2	2.2	0.5	78.8	3.1	18.1	0.087	0.541	16.082770	-93.770904
T. Der. Puerto Arista	73.00	1	1	3835	8.8	66.7	2.7	5.2	2.6	7.8	2.0	3.3	0.9	75.5	2.7	21.8	0.093	0.617	16.059929	-93.741819

CHIAPAS

21 CARR: Tapanatepec - Talismán

CLAVE: 00075

ruta: MEX-200

AÑO: 2025

LUGAR	ESTACION				CLASIFICACION VEHICULAR EN PORCIENTO													COORDENADAS		
	KM	TE	SC	TDPA	M	A	B	C2	C3	T3S2	T3S3	T3S2R4	OTROS	A	B	C	K'	D	LATITUD	LONGITUD
T. Der. Puerto Arista	73.00	1	2	4197	8.5	67.3	2.8	4.9	2.7	7.7	1.8	3.5	0.8	75.8	2.8	21.4	0.074	0.617	16.059994	-93.741782
T. Der. Puerto Arista	73.00	3	1	3621	7.1	65.0	3.3	7.5	2.9	8.0	2.2	3.4	0.6	72.1	3.3	24.6	0.090	0.552	16.055839	-93.734530
T. Der. Puerto Arista	73.00	3	2	3612	7.2	65.4	4.0	6.4	3.0	8.6	1.7	3.1	0.6	72.6	4.0	23.4	0.096	0.552	16.055962	-93.734460
T. Der. Tres Picos	100.40	1	1	2989	6.2	63.8	5.1	5.8	3.1	9.1	2.5	3.5	0.9	70.0	5.1	24.9	0.096	0.510	15.922699	-93.554967
T. Der. Tres Picos	100.40	1	2	3063	6.2	63.6	5.0	6.0	3.1	9.2	2.5	3.5	0.9	69.8	5.0	25.2	0.104	0.510	15.922938	-93.555105
T. Der. Tres Picos	100.40	3	1	2739	5.4	62.8	3.9	7.9	2.8	9.4	2.8	4.2	0.8	68.2	3.9	27.9	0.093	0.637	15.906045	-93.522606
T. Der. Tres Picos	100.40	3	2	2805	5.3	62.6	3.9	7.9	2.8	9.5	2.9	4.2	0.9	67.9	3.9	28.2	0.087	0.637	15.906068	-93.522249
T. Der. Los Patos	114.75	1	1	3087	4.8	63.4	5.5	7.5	2.1	10.0	2.1	3.6	1.0	68.2	5.5	26.3	0.070	0.557	15.838346	-93.435753
T. Der. Los Patos	114.75	1	2	3082	4.8	62.7	5.7	7.6	2.4	9.8	2.0	4.1	0.9	67.5	5.7	26.8	0.079	0.557	15.839470	-93.435937
T. Der. Los Patos	114.75	3	1	3175	4.8	63.7	7.2	5.3	2.1	9.8	1.7	4.5	0.9	68.5	7.2	24.3	0.079	0.572	15.815278	-93.415791
T. Der. Los Patos	114.75	3	2	2933	4.9	63.5	7.2	5.3	2.2	9.8	1.8	4.3	1.0	68.4	7.2	24.4	0.084	0.572	15.815543	-93.415440
T. Der. San Isidro	125.00	1	1	3542	6.2	63.3	4.0	7.3	2.7	8.1	2.9	4.6	0.9	69.5	4.0	26.5	0.076	0.503	15.779808	-93.364955
T. Der. San Isidro	125.00	1	2	3019	6.2	62.9	4.3	7.3	2.7	8.1	3.1	4.5	0.9	69.1	4.3	26.6	0.079	0.503	15.781619	-93.364846
T. Der. San Isidro	125.00	3	1	3465	5.3	67.2	3.8	6.2	2.0	8.0	2.7	3.9	0.9	72.5	3.8	23.7	0.071	0.600	15.774680	-93.353323
T. Der. San Isidro	125.00	3	2	3293	5.2	66.8	3.9	6.3	2.0	8.1	2.7	4.0	1.0	72.0	3.9	24.1	0.085	0.600	15.776078	-93.353606
Pijijiapan	144.45	1	1	7177	7.3	68.1	3.6	6.2	2.2	6.7	1.7	3.4	0.8	75.4	3.6	21.0	0.074	0.513	15.697784	-93.210585
Pijijiapan	144.45	1	2	6588	7.2	68.3	3.6	6.2	2.2	6.7	1.6	3.5	0.7	75.5	3.6	20.9	0.080	0.513	15.699171	-93.211967
Valdivia	180.39	1	1	3791	20.1	54.7	4.0	5.6	2.1	7.9	1.4	3.2	1.0	74.8	4.0	21.2	0.071	0.520	15.510972	-92.955960
Valdivia	180.39	1	2	3572	20.1	54.7	4.0	5.4	2.2	7.9	1.3	3.4	1.0	74.8	4.0	21.2	0.079	0.520	15.511557	-92.956223
Valdivia	180.39	3	1	4368	13.7	64.5	3.5	3.2	2.1	7.6	1.6	2.9	0.9	78.2	3.5	18.3	0.074	0.551	15.499373	-92.940134
Valdivia	180.39	3	2	4405	13.7	63.5	3.6	3.2	2.1	7.8	1.8	3.4	0.9	77.2	3.6	19.2	0.083	0.551	15.499808	-92.940422
T. Der. Mapastepec	188.85	3	1	4982	17.7	62.9	3.4	3.2	1.8	6.9	1.0	2.4	0.7	80.6	3.4	16.0	0.071	0.527	15.454493	-92.880530
T. Der. Mapastepec	188.85	3	2	4817	17.7	62.5	3.5	3.3	1.9	6.8	1.0	2.5	0.8	80.2	3.5	16.3	0.081	0.527	15.454576	-92.879417
Sesecapa	197.20	3	1	3857	9.3	67.0	4.1	3.4	2.3	8.0	2.2	2.9	0.8	76.3	4.1	19.6	0.080	0.519	15.401187	-92.813904
Sesecapa	197.20	3	2	3552	9.6	65.9	4.6	3.2	2.2	8.3	1.8	3.5	0.9	75.5	4.6	19.9	0.089	0.519	15.401809	-92.814527
T. Der. Estación Soconusco	213.30	1	1	4963	11.6	66.2	3.4	3.6	2.7	6.1	1.2	4.2	1.0	77.8	3.4	18.8	0.072	0.564	15.338063	-92.711366
T. Der. Estación Soconusco	213.30	1	2	4758	11.6	66.5	3.0	3.8	2.5	6.3	1.4	3.9	1.0	78.1	3.0	18.9	0.085	0.564	15.350490	-92.693938
T. Der. Estación Soconusco	213.30	3	1	4743	14.4	64.8	2.8	3.1	2.6	7.5	1.2	2.8	0.8	79.2	2.8	18.0	0.071	0.553	15.331632	-92.703592
T. Der. Estación Soconusco	213.30	3	2	4918	14.2	65.1	3.2	3.0	2.5	7.1	1.0	3.0	0.9	79.3	3.2	17.5	0.086	0.553	15.346612	-92.685141
Villa Comaltitlán	233.00	1	1	5187	9.2	64.7	3.9	7.8	2.3	7.5	1.0	2.7	0.9	73.9	3.9	22.2	0.077	0.517	15.237365	-92.587488
Villa Comaltitlán	233.00	1	2	4590	9.4	65.5	3.7	7.5	2.0	7.3	1.1	2.8	0.7	74.9	3.7	21.4	0.083	0.517	15.237601	-92.587114
T. Der a Lázaro Cárdenas	238.20	1	1	5457	7.8	72.8	4.2	3.8	1.9	5.6	0.9	2.3	0.7	80.6	4.2	15.2	0.073	0.552	15.183276	-92.550395
T. Der a Lázaro Cárdenas	238.20	1	2	5426	8.0	72.4	4.3	3.6	1.9	5.4	1.0	2.6	0.8	80.4	4.3	15.3	0.085	0.552	15.184671	-92.550278
T. Libramiento de Huixtla Oeste	245.00																			
Huixtla	250.50	1	1	5255	10.2	65.2	4.1	7.1	1.7	6.2	1.9	2.7	0.9	75.4	4.1	20.5	0.078	0.503	15.157974	-92.505504

CHIAPAS

21 CARR: Tapanatepec - Talismán

CLAVE: 00075

RUTA: MEX-200

AÑO: 2025

LUGAR	ESTACION				CLASIFICACION VEHICULAR EN PORCIENTO														COORDENADAS	
	KM	TE	SC	TDPA	M	A	B	C2	C3	T3S2	T3S3	T3S2R4	OTROS	A	B	C	K'	D	LATITUD	LONGITUD
Huixtla	250.50	1	2	5283	10.0	65.6	3.9	7.4	1.6	6.0	2.2	2.5	0.8	75.6	3.9	20.5	0.084	0.503	15.158161	-92.505772
Huixtla	250.50	3	1	10719	10.0	77.2	1.8	4.2	1.4	3.3	0.6	1.2	0.3	87.2	1.8	11.0	0.083	0.549	15.129014	-92.443124
Huixtla	250.50	3	2	9683	9.8	76.7	2.2	4.4	1.6	3.5	0.4	1.1	0.3	86.5	2.2	11.3	0.075	0.549	15.129041	-92.443034
T. Libramiento de Huixtla Este	251.80																			
T. Izq. Hamburgo	262.70	3	1	7357	8.0	75.9	2.6	5.1	1.8	4.1	0.6	1.5	0.4	83.9	2.6	13.5	0.078	0.506	15.106342	-92.431387
T. Izq. Hamburgo	262.70	3	2	7804	8.4	76.1	2.4	5.3	1.5	4.0	0.7	1.3	0.3	84.5	2.4	13.1	0.080	0.506	15.106585	-92.431349
T. Izq. Huehuetán	273.70	1	1	8449	13.6	72.4	2.6	4.2	1.2	3.4	0.7	1.5	0.4	86.0	2.6	11.4	0.087	0.538	15.015467	-92.402679
T. Izq. Huehuetán	273.70	1	2	8098	13.4	71.9	2.8	4.3	1.2	3.6	0.7	1.7	0.4	85.3	2.8	11.9	0.073	0.538	15.015474	-92.402599
T. Izq. Huehuetán	273.70	3	1	8331	9.5	76.3	1.8	5.2	1.4	3.8	0.5	1.2	0.3	85.8	1.8	12.4	0.073	0.649	14.992459	-92.402421
T. Izq. Huehuetán	273.70	3	2	8111	9.5	76.0	1.8	5.4	1.4	3.8	0.5	1.3	0.3	85.5	1.8	12.7	0.123	0.649	14.992573	-92.402352
T. C. Libramiento Sur de Tapachula Oeste	283.61	3	1	8159	3.7	88.9	1.9	3.3	1.1	0.7	0.2	0.2	0.0	92.6	1.9	5.5	0.093	0.512	14.906147	-92.320560
T. C. Libramiento Sur de Tapachula Oeste	283.61	3	2	8163	4.0	88.5	1.6	3.4	1.0	1.1	0.1	0.3	0.0	92.5	1.6	5.9	0.092	0.512	14.906229	-92.320532
Tapachula	292.25	1	1	10548	6.3	78.6	1.8	6.2	1.6	2.6	1.5	1.1	0.3	84.9	1.8	13.3	0.081	0.502	14.911549	-92.336372
Tapachula	292.25	1	2	10720	6.0	79.9	1.6	6.5	1.4	2.3	1.3	0.8	0.2	85.9	1.6	12.5	0.081	0.502	14.911519	-92.336046
T. C. Libramiento Sur de Tapachula Este	298.00	1	1	11722	3.8	93.0	0.4	2.3	0.2	0.3	0.0	0.0	0.0	96.8	0.4	2.8	0.081	0.541	14.891156	-92.231656
T. C. Libramiento Sur de Tapachula Este	298.00	1	2	11508	4.0	92.8	0.6	2.0	0.3	0.3	0.0	0.0	0.0	96.8	0.6	2.6	0.089	0.541	14.891236	-92.231691
T. Der. Cd. Hidalgo	302.75	1	1	12079	7.2	86.2	0.8	3.5	0.3	1.3	0.2	0.3	0.2	93.4	0.8	5.8	0.083	0.546	14.908299	-92.203531
T. Der. Cd. Hidalgo	302.75	1	2	12470	7.0	86.7	0.6	3.3	0.2	1.4	0.2	0.5	0.1	93.7	0.6	5.7	0.085	0.546	14.908407	-92.203529
Tuxtla Chico	307.00	1	0	14930	10.9	84.0	0.5	3.6	0.3	0.3	0.4	0.0	0.0	94.9	0.5	4.6	0.083	0.530	14.930895	-92.164821
Talismán	310.77	1	0	3096	32.6	63.9	0.4	2.0	0.4	0.4	0.1	0.1	0.1	96.5	0.4	3.1	0.086	0.515	14.961611	-92.150386

22 CARR: Tapanatepec - Tuxtla Gutiérrez

CLAVE: 00060

RUTA: MEX-190

AÑO: 2025

LUGAR	ESTACION				CLASIFICACION VEHICULAR EN PORCIENTO														COORDENADAS	
	KM	TE	SC	TDPA	M	A	B	C2	C3	T3S2	T3S3	T3S2R4	OTROS	A	B	C	K'	D	LATITUD	LONGITUD
Tapanatepec	0.00	3	0	2400	11.6	79.1	2.1	4.0	1.1	1.5	0.4	0.1	0.1	90.7	2.1	7.2	0.088	0.533	16.371141	-94.184587
Libramiento de San Pedro Tapanatepec	0.75	3	0	1386	15.3	59.2	4.3	7.6	2.7	4.5	6.1	0.3	0.0	74.5	4.3	21.2	0.079	0.541	16.372966	-94.172254
Lim. Edos. Term. Oax. Ppia. Chis.	17.90																			
Rizo de Oro	26.60	1	0	957	20.2	61.2	3.3	3.9	1.1	4.2	5.6	0.5	0.0	81.4	3.3	15.3	0.088	0.524	16.475387	-94.084572
T. Der. Arriaga	56.80	1	0	2717	18.6	68.6	1.5	5.2	1.2	1.5	3.1	0.3	0.0	87.2	1.5	11.3	0.088	0.618	16.567319	-93.852312
T. Der. Arriaga	56.80	3	0	3939	13.5	71.3	1.3	7.3	1.7	2.5	2.0	0.3	0.1	84.8	1.3	13.9	0.093	0.522	16.573830	-93.842014
Cintalapa	75.60	1	0	6342	15.1	75.9	0.8	3.3	1.0	1.6	1.5	0.6	0.2	91.0	0.8	8.2	0.074	0.513	16.652605	-93.755543
T. Der. Jiquipilas	82.00	1	0	8072	8.9	81.4	2.6	3.1	1.5	1.3	0.5	0.5	0.2	90.3	2.6	7.1	0.084	0.510	16.687836	-93.667392
T. Der. Jiquipilas	82.00	3	0	5359	7.0	78.5	2.4	5.0	2.9	2.2	1.5	0.4	0.1	85.5	2.4	12.1	0.083	0.520	16.688245	-93.661806
T. C. Arriaga - Ocozocoautla (Cuota)	96.20	1	0	5168	3.7	81.8	1.7	5.9	2.4	1.9	1.5	0.8	0.3	85.5	1.7	12.8	0.076	0.510	16.686114	-93.545869

CHIAPAS

22 CARR: Tapanatepec - Tuxtla Gutiérrez

CLAVE: 00060

RUTA: MEX-190

AÑO: 2025

LUGAR	ESTACION				CLASIFICACION VEHICULAR EN PORCIENTO										COORDENADAS					
	KM	TE	SC	TDPA	M	A	B	C2	C3	T3S2	T3S3	T3S2R4	OTROS	A	B	C	K'	D	LATITUD	LONGITUD
Ocozocoautla	123.29	1	0	4926	13.7	79.3	0.5	2.7	1.6	1.0	0.9	0.2	0.1	93.0	0.5	6.5	0.091	0.516	16.772246	-93.391654
Ocozocoautla	123.29	3	0	5325	13.5	79.1	1.3	4.4	0.7	0.3	0.2	0.4	0.1	92.6	1.3	6.1	0.081	0.502	16.757875	-93.362362
T. Izq. Aeropuerto	132.70	1	0	5160	11.3	78.3	1.0	6.8	1.2	0.3	0.7	0.2	0.2	89.6	1.0	9.4	0.089	0.557	16.752935	-93.340229
T. Izq. Aeropuerto	132.70	3	1	7935	3.9	80.4	2.4	5.5	1.6	3.4	0.9	1.5	0.4	84.3	2.4	13.3	0.093	0.522	16.758088	-93.327656
T. Izq. Aeropuerto	132.70	3	2	8379	3.7	81.9	2.2	5.3	1.4	3.1	0.8	1.3	0.3	85.6	2.2	12.2	0.083	0.522	16.758116	-93.327819
T. Izq. Berriozábal (1° Acceso)	136.40	1	1	10865	4.2	78.8	3.1	6.9	1.5	2.6	1.1	1.5	0.3	83.0	3.1	13.9	0.084	0.526	16.767496	-93.296073
T. Izq. Berriozábal (1° Acceso)	136.40	1	2	11024	4.6	78.7	3.0	6.8	1.5	2.8	0.7	1.5	0.4	83.3	3.0	13.7	0.082	0.526	16.767582	-93.295969
T. Izq. Berriozábal (1° Acceso)	136.40	3	1	11315	3.9	83.1	3.1	4.5	1.3	1.5	0.8	1.3	0.5	87.0	3.1	9.9	0.069	0.540	16.768914	-93.280681
T. Izq. Berriozábal (1° Acceso)	136.40	3	2	11194	4.0	82.9	3.0	4.9	1.4	1.9	0.6	1.0	0.3	86.9	3.0	10.1	0.080	0.540	16.768898	-93.281666
T. Izq. San Fernando	151.70	1	1	20157	3.0	87.6	1.1	4.4	1.3	1.1	0.6	0.7	0.2	90.6	1.1	8.3	0.082	0.582	16.770518	-93.197108
T. Izq. San Fernando	151.70	1	2	17611	3.4	86.5	1.5	4.8	1.3	0.9	0.5	0.7	0.4	89.9	1.5	8.6	0.071	0.582	16.770593	-93.197056
Tuxtla Gutiérrez	159.00	1	1	14460	3.9	84.5	1.4	6.1	1.6	1.0	0.8	0.5	0.2	88.4	1.4	10.2	0.094	0.562	16.767587	-93.192833
Tuxtla Gutiérrez	159.00	1	2	13961	4.3	84.0	1.7	6.0	1.0	1.4	0.8	0.5	0.3	88.3	1.7	10.0	0.080	0.562	16.767672	-93.192767

23 CARR: Terán - Chicoasén

CLAVE: 07072

RUTA: MEX-190

AÑO: 2025

LUGAR	ESTACION				CLASIFICACION VEHICULAR EN PORCIENTO										COORDENADAS					
	KM	TE	SC	TDPA	M	A	B	C2	C3	T3S2	T3S3	T3S2R4	OTROS	A	B	C	K'	D	LATITUD	LONGITUD
Terán	0.00	3	0	11391	7.0	88.7	0.3	2.3	0.5	0.3	0.4	0.4	0.1	95.7	0.3	4.0	0.087	0.666	16.790387	-93.178375
T. Izq. San Fernando (1° Acceso)	14.00	1	0	11419	9.2	87.4	0.4	1.5	0.5	0.3	0.4	0.1	0.2	96.6	0.4	3.0	0.076	0.607	16.853451	-93.199380
Chicoasén	34.00																			

24 CARR: Tuxtla Gutiérrez - Angostura

CLAVE: 07584

RUTA: MEX-190

AÑO: 2025

LUGAR	ESTACION				CLASIFICACION VEHICULAR EN PORCIENTO										COORDENADAS					
	KM	TE	SC	TDPA	M	A	B	C2	C3	T3S2	T3S3	T3S2R4	OTROS	A	B	C	K'	D	LATITUD	LONGITUD
T. C. Tuxtla Gutiérrez - Cd. Cuauhtémoc	0.00	3	1	17299	5.4	88.5	0.8	2.2	1.0	1.1	0.3	0.5	0.2	93.9	0.8	5.3	0.080	0.589	16.731774	-93.045599
T. C. Tuxtla Gutiérrez - Cd. Cuauhtémoc	0.00	3	2	16641	5.7	87.4	1.0	2.5	1.1	1.3	0.3	0.4	0.3	93.1	1.0	5.9	0.088	0.589	16.731822	-93.045515
T. Der. Revolución Mexicana	16.70	3	0	5110	6.9	83.1	1.3	3.6	2.1	1.0	0.8	0.9	0.3	90.0	1.3	8.7	0.088	0.514	16.609401	-92.992352
Angostura	52.00	1	0	3094	8.2	81.7	0.6	5.8	0.5	1.6	0.7	0.8	0.1	89.9	0.6	9.5	0.091	0.507	16.404069	-92.767567

CHIAPAS

25 CARR : Tuxtla Gutiérrez - Cd. Cuauhtémoc

CLAVE: 07061

RUTA: MEX-190

AÑO: 2025

LUGAR	ESTACION				CLASIFICACION VEHICULAR EN PORCIENTO										COORDENADAS					
	KM	TE	SC	TDPA	M	A	B	C2	C3	T3S2	T3S3	T3S2R4	OTROS	A	B	C	K'	D	LATITUD	LONGITUD
Tuxtla Gutiérrez	0.00																			
T. Der. Presa La Angostura	7.50	1	1	33498	3.6	91.2	1.0	2.2	0.6	0.3	0.3	0.6	0.2	94.8	1.0	4.2	0.077	0.539	16.735280	-93.058628
T. Der. Presa La Angostura	7.50	1	2	32232	3.4	91.4	0.8	2.7	0.4	0.5	0.2	0.5	0.1	94.8	0.8	4.4	0.069	0.539	16.735376	-93.058568
T. Der. Presa La Angostura	7.50	3	1	17349	4.2	90.3	1.4	2.4	0.5	0.6	0.3	0.2	0.1	94.5	1.4	4.1	0.095	0.589	16.742374	-93.031350
T. Der. Presa La Angostura	7.50	3	2	17466	4.5	89.1	1.1	2.8	0.7	0.9	0.2	0.4	0.3	93.6	1.1	5.3	0.079	0.589	16.742474	-93.031307
Chiapa de Corzo	15.33	3	0	12165	4.9	90.0	0.8	2.1	0.8	0.6	0.2	0.4	0.2	94.9	0.8	4.3	0.077	0.501	16.712654	-92.991508
T. Izq. Pichucalco	34.41	1	0	4244	3.8	88.3	1.3	2.5	2.2	0.9	0.6	0.3	0.1	92.1	1.3	6.6	0.077	0.563	16.760049	-92.946532
T. Izq. Pichucalco	34.41	3	0	1403	4.2	93.7	0.6	0.4	0.7	0.2	0.1	0.1	0.0	97.9	0.6	1.5	0.088	0.573	16.752735	-92.929767
San Cristóbal de Las Casas	85.19	1	0	7772	14.5	80.0	0.7	2.1	0.7	0.7	0.1	0.9	0.3	94.5	0.7	4.8	0.073	0.517	16.724337	-92.674251
San Cristóbal de Las Casas	85.19	3	0	17112	4.8	88.8	0.9	1.9	1.1	1.3	0.7	0.4	0.1	93.6	0.9	5.5	0.077	0.503	16.701164	-92.607009
T. Izq. Ocosingo	95.90	3	0	10124	3.3	89.1	1.6	1.8	1.0	2.1	0.8	0.2	0.1	92.4	1.6	6.0	0.074	0.541	16.660691	-92.558880
Teopisca	116.90	1	0	11475	9.3	78.0	1.6	7.0	1.3	1.6	0.8	0.3	0.1	87.3	1.6	11.1	0.073	0.562	16.555932	-92.481571
Teopisca	116.90	3	0	8907	9.2	82.7	1.5	2.1	1.0	2.1	0.6	0.7	0.1	91.9	1.5	6.6	0.080	0.546	16.533596	-92.461896
T. Der. Las Rosas	121.00	3	0	9384	7.4	85.9	1.1	2.2	1.4	1.2	0.4	0.2	0.2	93.3	1.1	5.6	0.080	0.576	16.300851	-92.183625
Amatenango del Valle	122.00	3	0	5875	3.9	83.8	3.0	4.2	1.2	2.6	0.7	0.2	0.4	87.7	3.0	9.3	0.082	0.583	16.522077	-92.422638
Comitán	171.60	1	0	9555	6.6	86.2	1.6	2.7	0.5	1.4	0.3	0.3	0.4	92.8	1.6	5.6	0.086	0.576	16.277481	-92.169031
Comitán	171.60	3	1	9139	6.9	88.8	0.6	2.1	0.6	0.4	0.3	0.2	0.1	95.7	0.6	3.7	0.084	0.502	16.208792	-92.111844
Comitán	171.60	3	2	9247	7.0	88.8	0.5	2.4	0.6	0.3	0.2	0.1	0.1	95.8	0.5	3.7	0.087	0.502	16.208837	-92.111755
T. Izq. Montebello	187.46	1	1	5722	9.0	84.3	0.6	3.6	0.6	1.3	0.2	0.3	0.1	93.3	0.6	6.1	0.099	0.546	16.132293	-92.064922
T. Izq. Montebello	187.46	1	2	5683	8.2	84.7	0.6	3.7	0.8	1.5	0.2	0.2	0.1	92.9	0.6	6.5	0.106	0.546	16.132323	-92.064857
La Trinitaria	189.00	3	0	3771	4.1	88.4	1.2	3.6	1.3	1.0	0.3	0.1	0.0	92.5	1.2	6.3	0.090	0.503	16.098595	-92.047320
T. Izq. Chihuahua	201.04	3	0	4039	3.7	89.6	1.2	3.3	0.8	1.0	0.3	0.1	0.0	93.3	1.2	5.5	0.088	0.548	16.014983	-92.019717
T. Der. Frontera Comalapa	251.26	1	0	3681	13.4	78.1	1.6	3.9	1.3	1.0	0.4	0.2	0.1	91.5	1.6	6.9	0.096	0.599	15.686755	-92.004717
Cd. Cuauhtémoc	256.00	1	0	5554	26.4	64.7	0.7	3.5	0.7	3.4	0.2	0.3	0.1	91.1	0.7	8.2	0.083	0.590	15.677042	-92.002856

26 CARR : Villahermosa - Escopetazo

CLAVE: 00104

RUTA: MEX-195

AÑO: 2025

LUGAR	ESTACION				CLASIFICACION VEHICULAR EN PORCIENTO										COORDENADAS					
	KM	TE	SC	TDPA	M	A	B	C2	C3	T3S2	T3S3	T3S2R4	OTROS	A	B	C	K'	D	LATITUD	LONGITUD
Villahermosa	0.00	3	1	25873	6.2	87.1	0.5	4.0	0.6	0.8	0.3	0.4	0.1	93.3	0.5	6.2	0.086	0.669	17.941239	-92.917981
Villahermosa	0.00	3	2	23692	6.0	87.6	0.6	3.8	0.4	0.7	0.5	0.3	0.1	93.6	0.6	5.8	0.121	0.669	17.941340	-92.917869
Parrilla	10.00	1	1	20260	5.5	87.6	0.7	4.2	0.5	0.7	0.4	0.3	0.1	93.1	0.7	6.2	0.084	0.670	17.913604	-92.923293
Parrilla	10.00	1	2	18900	5.8	86.8	0.5	4.4	0.6	0.9	0.5	0.3	0.2	92.6	0.5	6.9	0.107	0.670	17.913586	-92.923209
Parrilla	10.00	3	1	22125	4.2	88.7	0.5	3.7	1.0	0.9	0.4	0.4	0.2	92.9	0.5	6.6	0.075	0.621	17.887068	-92.922529
Parrilla	10.00	3	2	22163	4.0	88.0	0.8	4.0	1.2	1.0	0.3	0.6	0.1	92.0	0.8	7.2	0.109	0.621	17.887143	-92.922461

CHIAPAS

26 CARR: Villahermosa - Escopetazo

CLAVE: 00104

RUTA: MEX-195

AÑO: 2025

LUGAR	ESTACION				CLASIFICACION VEHICULAR EN PORCIENTO										COORDENADAS					
	KM	TE	SC	TDPA	M	A	B	C2	C3	T3S2	T3S3	T3S2R4	OTROS	A	B	C	K'	D	LATITUD	LONGITUD
T. Izq. Subte. García	20.00	3	1	8032	11.5	79.9	0.6	3.6	1.3	1.7	0.8	0.4	0.2	91.4	0.6	8.0	0.071	0.513	17.825620	-92.929149
T. Izq. Subte. García	20.00	3	2	8795	11.7	79.1	0.8	3.5	1.4	1.8	0.9	0.5	0.3	90.8	0.8	8.4	0.069	0.513	17.825650	-92.929114
La Arena	44.00	1	0	6466	8.5	78.1	2.0	4.4	1.4	3.7	1.3	0.5	0.1	86.6	2.0	11.4	0.078	0.582	17.653450	-92.959142
T. Izq. Teapa	54.80	1	0	11174	8.9	75.4	1.3	6.1	1.0	5.7	0.9	0.4	0.3	84.3	1.3	14.4	0.079	0.560	17.571853	-92.956729
T. Izq. Teapa	54.80	3	0	6560	8.0	80.1	1.1	6.1	0.9	2.5	0.7	0.3	0.3	88.1	1.1	10.8	0.076	0.510	17.568347	-92.964819
Lim. Edos. Term. Tab. Ppia. Chis.	61.42																			
Pichucalco	76.00	1	0	3740	9.2	83.4	0.4	4.0	0.8	1.5	0.6	0.1	0.0	92.6	0.4	7.0	0.087	0.505	17.519893	-93.101856
Pichucalco	76.00	3	0	4639	10.7	81.9	0.2	4.0	0.7	1.8	0.5	0.1	0.1	92.6	0.2	7.2	0.083	0.570	17.497632	-93.102707
Solusuchiapa	112.00	1	0	1834	7.8	84.6	0.8	3.0	1.9	0.2	1.5	0.2	0.0	92.4	0.8	6.8	0.084	0.526	17.428156	-93.038305
Solusuchiapa	112.00	3	0	1793	9.9	81.8	0.5	4.0	1.9	1.0	0.7	0.2	0.0	91.7	0.5	7.8	0.102	0.588	17.420298	-93.027027
Rayón	146.00	1	0	2563	9.3	83.7	0.6	3.6	0.7	1.6	0.2	0.2	0.1	93.0	0.6	6.4	0.092	0.506	17.205359	-93.011837
Jitotol	197.79	1	0	2394	5.1	87.1	0.7	3.0	2.0	1.1	0.6	0.4	0.0	92.2	0.7	7.1	0.092	0.545	17.081145	-92.867790
Jitotol	197.79	3	0	3279	5.7	88.9	0.7	2.0	1.7	0.4	0.3	0.2	0.1	94.6	0.7	4.7	0.105	0.545	17.052729	-92.857025
Bochil	211.00	1	0	5000	5.2	86.8	1.4	2.2	1.8	1.3	0.3	0.8	0.2	92.0	1.4	6.6	0.084	0.545	16.988561	-92.876244
Soyaló	229.00	3	0	3201	3.3	88.8	1.3	2.8	1.8	1.1	0.6	0.3	0.0	92.1	1.3	6.6	0.090	0.571	16.879764	-92.917563
Ixtapa	247.00	1	0	4564	2.9	89.2	1.3	2.1	2.4	1.4	0.5	0.2	0.0	92.1	1.3	6.6	0.089	0.502	16.815476	-92.908057
Escopetazo	259.00	1	0	3690	2.7	89.3	1.2	2.8	1.7	1.3	0.5	0.5	0.0	92.0	1.2	6.8	0.091	0.509	16.756061	-92.934978

27 CARR: Villahermosa - Francisco Escárcega

CLAVE: 00092

RUTA: MEX-186-307

AÑO: 2025

LUGAR	ESTACION				CLASIFICACION VEHICULAR EN PORCIENTO										COORDENADAS					
	KM	TE	SC	TDPA	M	A	B	C2	C3	T3S2	T3S3	T3S2R4	OTROS	A	B	C	K'	D	LATITUD	LONGITUD
Villahermosa	0.00	3	1	16682	3.7	84.5	0.8	6.0	0.5	2.4	0.4	1.4	0.3	88.2	0.8	11.0	0.079	0.515	18.001034	-92.890710
Villahermosa	0.00	3	2	16228	4.1	84.1	1.0	5.7	0.8	2.0	0.9	1.2	0.2	88.2	1.0	10.8	0.077	0.515	18.001136	-92.890710
T. C. Libramiento de Villahermosa (Cuota)	3.77																			
T. Izq. Aeropuerto (Alta)	12.00	1	1	17749	5.8	78.8	2.3	5.3	1.4	3.0	1.2	1.6	0.6	84.6	2.3	13.1	0.068	0.547	17.985027	-92.829609
T. Izq. Aeropuerto (Baja)	12.00	1	1	2202	16.8	69.1	1.9	5.5	2.0	1.3	1.1	1.5	0.8	85.9	1.9	12.2	0.105	0.547	17.984972	-92.829643
T. Izq. Aeropuerto (Alta)	12.00	1	2	17226	6.3	77.2	1.9	5.9	1.5	3.1	1.4	2.0	0.7	83.5	1.9	14.6	0.073	0.547	17.985088	-92.829539
T. Izq. Aeropuerto (Baja)	12.00	1	2	2441	16.7	68.2	2.0	6.1	2.0	1.3	1.3	1.6	0.8	84.9	2.0	13.1	0.071	0.547	17.985151	-92.829486
Puente Grijalva	17.60	2	1	8370	4.7	78.2	2.5	3.3	2.0	4.6	1.5	2.8	0.4	82.9	2.5	14.6	0.079	0.500	17.947602	-92.785235
Puente Grijalva	17.60	2	2	8370	4.7	78.2	2.5	3.3	2.0	4.6	1.5	2.8	0.4	82.9	2.5	14.6	0.079	0.500	17.947602	-92.785235
X. C. Cacaos - La Granja	32.46	1	1	7032	3.6	77.6	2.8	3.4	2.1	4.9	2.5	2.4	0.7	81.2	2.8	16.0	0.080	0.511	17.832798	-92.719573
X. C. Cacaos - La Granja	32.46	1	2	7557	3.5	77.4	3.1	3.4	2.0	4.8	2.6	2.6	0.6	80.9	3.1	16.0	0.077	0.511	17.832829	-92.719493
X. C. Cacaos - La Granja	32.46	3	1	6534	3.8	74.2	3.4	4.7	1.8	5.0	2.0	4.1	1.0	78.0	3.4	18.6	0.066	0.540	17.817687	-92.711025
X. C. Cacaos - La Granja	32.46	3	2	6246	4.0	74.4	3.4	4.2	2.1	5.0	2.1	3.9	0.9	78.4	3.4	18.2	0.077	0.540	17.817733	-92.710943

CHIAPAS

27 CARR: Villahermosa - Francisco Escárcega

CLAVE: 00092

RUTA: MEX-186-307

AÑO: 2025

LUGAR	ESTACION				CLASIFICACION VEHICULAR EN PORCIENTO														COORDENADAS	
	KM	TE	SC	TDPA	M	A	B	C2	C3	T3S2	T3S3	T3S2R4	OTROS	A	B	C	K'	D	LATITUD	LONGITUD
X. C. Jalapa - Jonuta	40.00	3	1	6352	3.5	73.6	3.9	5.2	2.0	5.6	2.0	3.4	0.8	77.1	3.9	19.0	0.077	0.528	17.773632	-92.672112
X. C. Jalapa - Jonuta	40.00	3	2	6150	2.9	74.2	3.5	5.1	2.0	5.5	2.2	3.7	0.9	77.1	3.5	19.4	0.078	0.528	17.773705	-92.672039
T. Izq. Macuspana	46.20	1	1	7422	4.0	75.9	2.4	3.5	2.9	5.1	1.9	3.4	0.9	79.9	2.4	17.7	0.070	0.551	17.744222	-92.634273
T. Izq. Macuspana	46.20	1	2	6895	3.8	76.9	2.1	3.4	3.3	4.9	1.6	3.1	0.9	80.7	2.1	17.2	0.075	0.551	17.744298	-92.634219
T. Izq. Macuspana	46.20	3	1	6636	4.6	75.7	2.5	4.0	2.9	5.1	2.1	2.6	0.5	80.3	2.5	17.2	0.096	0.608	17.731817	-92.618416
T. Izq. Macuspana	46.20	3	2	6992	4.4	74.4	2.2	4.1	3.4	5.2	2.3	3.3	0.7	78.8	2.2	19.0	0.079	0.608	17.731880	-92.618356
X. C. Estación Macuspana - Vernet	54.30	1	0	11541	7.2	70.4	2.2	3.7	3.3	6.1	2.2	3.9	1.0	77.6	2.2	20.2	0.068	0.539	17.712830	-92.583689
T. Der. Chivalito (Est. Pino Suárez)	70.00	1	0	12565	7.2	66.4	4.4	5.8	2.2	6.8	2.5	3.8	0.9	73.6	4.4	22.0	0.067	0.548	17.670571	-92.446610
T. Der. Chivalito (Est. Pino Suárez)	70.00	3	1	4716	5.7	70.5	3.1	3.7	2.4	7.3	2.0	4.5	0.8	76.2	3.1	20.7	0.083	0.729	17.666372	-92.424324
T. Der. Chivalito (Est. Pino Suárez)	70.00	3	2	4500	5.4	68.2	3.4	3.9	2.7	8.2	2.2	5.2	0.8	73.6	3.4	23.0	0.115	0.729	17.666206	-92.432461
T. Der. Estación Zopo	71.00	1	0	9495	5.9	66.3	4.4	4.7	2.6	8.0	2.9	4.6	0.6	72.2	4.4	23.4	0.074	0.617	17.672181	-92.415404
T. Der. Estación Zopo	71.00	3	1	4936	5.7	65.8	4.1	4.3	2.9	8.2	3.1	5.0	0.9	71.5	4.1	24.4	0.083	0.515	17.682236	-92.399853
T. Der. Estación Zopo	71.00	3	2	4702	5.5	65.3	4.2	4.4	2.7	8.4	3.3	5.4	0.8	70.8	4.2	25.0	0.093	0.515	17.682265	-92.399877
Lim. Edos. Term. Tab. Ppia. Chis.	76.90																			
T. Izq. Bonanza	88.00	1	0	9272	6.5	64.5	3.3	7.2	2.7	8.1	2.2	4.8	0.7	71.0	3.3	25.7	0.067	0.589	17.698113	-92.268841
T. Izq. Jonuta	101.00	1	0	8736	2.2	69.6	3.0	7.9	2.7	6.9	2.5	4.5	0.7	71.8	3.0	25.2	0.072	0.521	17.698148	-92.145108
T. Izq. Jonuta	101.00	3	0	8209	7.1	64.0	3.3	7.2	2.8	7.4	2.5	5.2	0.5	71.1	3.3	25.6	0.069	0.567	17.697744	-92.128640
X. C. Catazajá - Palenque	114.00	1	0	10345	6.9	65.4	3.2	6.6	2.5	7.9	1.9	5.1	0.5	72.3	3.2	24.5	0.062	0.521	17.707138	-92.026121
X. C. Catazajá - Palenque	114.00	3	0	9170	5.5	66.6	3.1	6.7	2.8	7.7	2.4	4.5	0.7	72.1	3.1	24.8	0.066	0.558	17.722880	-91.976434
T. Der. Emiliano Zapata	134.70	1	0	6771	6.5	64.4	4.7	4.1	3.1	8.5	2.1	5.9	0.7	70.9	4.7	24.4	0.069	0.572	17.770550	-91.837622
T. Der. Emiliano Zapata	134.70	3	0	5087	5.9	65.8	4.8	4.3	3.0	7.7	2.1	5.7	0.7	71.7	4.8	23.5	0.076	0.576	17.785075	-91.822203
Lim. Edos. Term. Chis. Ppia. Tab.	140.70																			
Puente Usumacinta	145.20	2	0	4949	9.1	56.9	3.4	3.5	4.0	12.0	2.3	7.9	0.9	66.0	3.4	30.6	0.079	0.500	17.859905	-91.783654
T. Izq. Palizada	154.05	1	0	4766	7.9	62.0	4.3	2.8	3.0	7.8	2.8	8.7	0.7	69.9	4.3	25.8	0.068	0.634	17.937827	-91.737210
T. Izq. Palizada	154.05	3	0	3704	6.0	55.9	5.9	3.3	3.2	12.9	2.9	9.1	0.8	61.9	5.9	32.2	0.069	0.591	17.945839	-91.730423
Lim. Edos. Term. Tab. Ppia. Camp.	154.60																			
T. Der. Candelaria	233.40	1	0	4152	4.9	56.5	6.4	5.4	2.3	12.2	2.6	8.9	0.8	61.4	6.4	32.2	0.066	0.533	18.370512	-91.203355
T. Der. Felipe Ángeles	253.00	1	0	4761	3.6	61.0	6.0	5.1	2.3	11.6	2.8	6.7	0.9	64.6	6.0	29.4	0.067	0.517	18.504068	-91.106418
T. Izq. Sabancuy	274.10	1	0	5913	6.9	60.4	5.0	5.7	2.5	9.3	2.1	7.1	1.0	67.3	5.0	27.7	0.069	0.501	18.629655	-90.988511
Francisco Escárcega	297.04	1	0	9673	14.5	66.2	2.4	2.8	2.3	6.2	1.4	3.4	0.8	80.7	2.4	16.9	0.072	0.541	18.610039	-90.776466

CHIAPAS

28 CARR: Arriaga - Ocozocoautla (Cuota)

CLAVE: 00092

RUTA: MEX-200D

AÑO: 2025

LUGAR	ESTACION				CLASIFICACION VEHICULAR EN PORCIENTO										COORDENADAS					
	KM	TE	SC	TDPA	M	A	B	C2	C3	T3S2	T3S3	T3S2R4	OTROS	A	B	C	K'	D	LATITUD	LONGITUD
Arriaga	0.00	3	0	7723	2.8	72.8	4.6	5.5	2.2	6.9	1.0	3.3	0.9	75.6	4.6	19.8	0.071	0.527	16.244341	-93.880673
Plaza de Cobro Arriaga	2.70	2	0	5394	1.0	73.9	3.4	6.0	3.5	6.7	1.1	3.7	0.7	74.9	3.4	21.7	0.087	0.500	16.257485	-93.875377
Plaza de Cobro Arriaga	2.70	3	0	6793	2.7	73.2	4.7	5.5	2.8	5.4	1.2	3.6	0.9	75.9	4.7	19.4	0.067	0.715	16.262365	-93.869753
T. Izq. Tierra y Libertad	20.30	1	0	5521	2.8	73.4	5.1	5.6	2.4	5.6	1.2	3.1	0.8	76.2	5.1	18.7	0.090	0.503	16.353286	-93.865273
T. Izq. Tierra y Libertad	20.30	3	0	5126	3.1	68.1	5.2	9.1	2.1	6.5	1.4	3.7	0.8	71.2	5.2	23.6	0.077	0.759	16.369895	-93.863582
Plaza de Cobro Jiquipilas	61.05	2	0	4687	0.8	72.0	3.3	5.9	3.9	7.6	1.2	4.5	0.8	72.8	3.3	23.9	0.087	0.500	16.620512	-93.602104
Plaza de Cobro Jiquipilas	61.05	3	0	5735	2.5	71.6	3.1	7.6	2.5	6.9	1.6	3.3	0.9	74.1	3.1	22.8	0.076	0.503	16.632232	-93.593424
Plaza de Cobro Montes Azules	70.60	2	0	4988	1.1	71.7	3.2	6.4	4.0	7.4	1.2	4.2	0.8	72.8	3.2	24.0	0.087	0.500	16.620609	-93.600526
Plaza de Cobro Ocozocoautla	92.00	1	0	7139	1.6	73.2	4.2	8.9	2.0	5.0	1.7	2.7	0.7	74.8	4.2	21.0	0.079	0.506	16.736566	-93.413817
Plaza de Cobro Ocozocoautla	92.00	2	0	7562	1.1	74.8	4.5	5.8	3.3	5.6	1.5	2.8	0.6	75.9	4.5	19.6	0.087	0.500	16.738487	-93.400346
Ocozocoautla	93.77																			

29 CARR: Las Choapas - Ocozocoautla (Cuota)

CLAVE: 00077

RUTA: MEX-187D

AÑO: 2025

LUGAR	ESTACION				CLASIFICACION VEHICULAR EN PORCIENTO										COORDENADAS					
	KM	TE	SC	TDPA	M	A	B	C2	C3	T3S2	T3S3	T3S2R4	OTROS	A	B	C	K'	D	LATITUD	LONGITUD
T. C. Coatzacoalcos - Villahermosa	0.00	3	0	6544	4.4	45.3	9.7	5.8	4.5	15.3	4.5	9.6	0.9	49.7	9.7	40.6	0.068	0.555	18.061502	-94.245557
Plaza de Cobro Las Choapas	16.80	1	0	4977	4.7	55.5	8.2	4.6	3.8	11.4	2.7	8.3	0.8	60.2	8.2	31.6	0.062	0.502	17.953786	-94.176884
Plaza de Cobro Las Choapas	16.80	3	0	3020	4.1	37.4	11.4	6.5	5.9	18.6	3.4	11.7	1.0	41.5	11.4	47.1	0.057	0.607	17.926480	-94.162316
Ent. Nuevo Progreso	62.40	1	0	4340	7.1	39.9	11.7	6.8	3.6	18.2	2.7	9.2	0.8	47.0	11.7	41.3	0.070	0.528	17.670221	-93.869357
Lim. Edos. Term. Ver. Ppia. Tab.	96.68																			
Plaza de Cobro Malpasito	112.70	1	0	3297	1.3	49.9	6.0	11.2	5.3	15.4	3.1	6.8	1.0	51.2	6.0	42.8	0.065	0.591	17.351872	-93.587621
Plaza de Cobro Malpasito	112.70	2	0	4572	0.8	48.6	3.9	6.5	8.0	16.5	3.1	10.8	1.8	49.4	3.9	46.7	0.072	0.500	17.349070	-93.586472
Lim. Edos. Term. Tab. Ppia. Chis.	113.70																			
T. Izq. Malpaso	123.79	1	0	4832	1.3	65.7	6.3	6.2	3.6	8.1	2.5	5.5	0.8	67.0	6.3	26.7	0.066	0.514	17.269207	-93.572239
X. C. Tepatán - Raudales Malpaso	134.00	1	0	5764	3.7	55.9	5.5	8.1	3.8	12.4	2.3	7.7	0.6	59.6	5.5	34.9	0.088	0.537	17.191278	-93.554843
T. Der a América Libre	163.40	1	0	6526	5.1	54.6	5.3	9.9	3.5	11.0	2.7	7.4	0.5	59.7	5.3	35.0	0.087	0.542	17.005402	-93.501469
Carrizal	173.60	1	0	6264	3.3	58.1	5.5	9.3	3.2	11.2	2.3	6.6	0.5	61.4	5.5	33.1	0.078	0.502	16.921510	-93.452326
Plaza de Cobro Ocozocoautla	182.50	1	0	5656	3.6	54.2	9.2	5.9	3.4	13.1	2.3	7.5	0.8	57.8	9.2	33.0	0.073	0.539	16.870697	-93.414328
Plaza de Cobro Ocozocoautla	182.50	2	0	5079	0.6	53.6	3.6	6.2	7.1	14.8	2.8	9.8	1.5	54.2	3.6	42.2	0.072	0.500	16.863183	-93.406856
T. C. Tapanatepec - Tuxtla Gutiérrez	197.50	1	0	6304	5.2	59.4	7.9	5.4	2.7	10.4	2.1	6.3	0.6	64.6	7.9	27.5	0.070	0.501	16.774260	-93.320066

CHIAPAS

30 CARR: Tuxtla Gutiérrez - San Cristóbal de Las Casas (Cuota)

CLAVE: 07580

RUTA: MEX-190D

AÑO: 2025

LUGAR	ESTACION				CLASIFICACION VEHICULAR EN PORCIENTO										COORDENADAS					
	KM	TE	SC	TDPA	M	A	B	C2	C3	T3S2	T3S3	T3S2R4	OTROS	A	B	C	K'	D	LATITUD	LONGITUD
T. C. Tuxtla Gutiérrez - Cd. Cuauhtémoc	0.00																			
Plaza de Cobro Chiapa de Corzo	1.30	2	0	11562	1.3	87.9	1.2	4.0	1.9	1.9	0.9	0.7	0.2	89.2	1.2	9.6	0.088	0.500	16.730567	-93.009544
Plaza de Cobro Chiapa de Corzo	1.30	3	0	12093	1.4	86.3	2.2	4.8	1.4	2.0	1.0	0.8	0.1	87.7	2.2	10.1	0.088	0.515	16.727749	-93.000332
T. C. Libramiento de San Cristóbal de Las Casas	46.00	1	0	15703	3.2	85.6	1.8	3.5	1.4	2.0	0.6	1.5	0.4	88.8	1.8	9.4	0.067	0.548	16.719447	-92.665668

31 CARR: Chiapa de Corzo - Amatenango del Valle

CLAVE: 07024

RUTA: CHIS

AÑO: 2025

LUGAR	ESTACION				CLASIFICACION VEHICULAR EN PORCIENTO										COORDENADAS					
	KM	TE	SC	TDPA	M	A	B	C2	C3	T3S2	T3S3	T3S2R4	OTROS	A	B	C	K'	D	LATITUD	LONGITUD
T. C. Tuxtla Gutiérrez - Cd. Cuauhtémoc	0.00	3	0	2172	9.3	81.2	0.2	5.7	0.7	1.7	0.6	0.4	0.2	90.5	0.2	9.3	0.086	0.597	16.721598	-92.980593
Flores Magón	74.00	1	0	3325	5.8	80.6	1.3	4.7	1.9	2.5	1.8	1.2	0.2	86.4	1.3	12.3	0.088	0.557	16.399511	-92.705570
Flores Magón	74.00	3	0	2560	5.4	80.2	0.4	5.5	1.5	3.2	1.9	1.7	0.2	85.6	0.4	14.0	0.098	0.560	16.385507	-92.699027
T. Izq. Venustiano Carranza (1º Acceso)	92.80	1	0	4153	5.4	82.2	0.6	5.1	1.2	2.8	1.7	0.8	0.2	87.6	0.6	11.8	0.101	0.562	16.344118	-92.584796
T. Izq. Venustiano Carranza (1º Acceso)	92.80	3	0	2688	11.2	70.7	0.3	9.3	1.9	3.2	1.8	1.4	0.2	81.9	0.3	17.8	0.095	0.570	16.341470	-92.577632
Soyatitán	111.20	1	0	4045	28.1	65.8	0.0	2.7	0.4	2.0	0.6	0.1	0.3	93.9	0.0	6.1	0.092	0.540	16.297124	-92.430074
T. Der. Las Rosas (1º Acceso)	120.22	1	0	4160	24.6	70.5	0.1	2.6	0.4	1.3	0.3	0.1	0.1	95.1	0.1	4.8	0.076	0.557	16.347918	-92.378286
T. Der. Las Rosas (1º Acceso)	120.22	3	0	5157	18.4	73.9	0.1	2.0	0.5	3.9	0.7	0.4	0.1	92.3	0.1	7.6	0.087	0.535	16.360301	-92.379226
T. C. Tuxtla Gutiérrez - Cd. Cuauhtémoc	146.50	1	0	2039	16.9	78.8	0.3	2.9	0.5	0.4	0.1	0.1	0.0	95.7	0.3	4.0	0.105	0.593	16.523714	-92.445227

32 CARR: Ent. Emiliano Zapata - La Libertad

CLAVE: 00062

RUTA: CHIS-TAB

AÑO: 2025

LUGAR	ESTACION				CLASIFICACION VEHICULAR EN PORCIENTO										COORDENADAS					
	KM	TE	SC	TDPA	M	A	B	C2	C3	T3S2	T3S3	T3S2R4	OTROS	A	B	C	K'	D	LATITUD	LONGITUD
T. C. El Suspiro - Tenosique	0.00	3	0	2219	16.3	80.6	0.6	1.3	0.5	0.7	0.0	0.0	0.0	96.9	0.6	2.5	0.084	0.532	17.720590	-91.744408
Lim. Edos. Term. Tab. Ppia. Chis.	8.00																			
La Libertad	10.00	1	0	1772	7.6	85.8	0.4	2.4	0.6	3.0	0.1	0.0	0.1	93.4	0.4	6.2	0.087	0.523	17.690579	-91.722253

33 CARR: Ent. Suschilá - Comitán

CLAVE: 00061

RUTA: CHIS-TAB

AÑO: 2025

LUGAR	ESTACION				CLASIFICACION VEHICULAR EN PORCIENTO										COORDENADAS					
	KM	TE	SC	TDPA	M	A	B	C2	C3	T3S2	T3S3	T3S2R4	OTROS	A	B	C	K'	D	LATITUD	LONGITUD
T. C. Ocosingo - Comitán	0.00	3	0	506	6.9	84.7	0.3	5.8	0.9	0.6	0.5	0.2	0.1	91.6	0.3	8.1	0.093	0.660	16.863453	-92.025685
Shuvi	23.40	1	0	549	6.8	84.7	0.2	6.4	1.1	0.5	0.0	0.3	0.0	91.5	0.2	8.3	0.098	0.556	16.805750	-91.893410
Shuvi	23.40	3	0	552	5.6	86.9	0.2	6.4	0.6	0.2	0.0	0.1	0.0	92.5	0.2	7.3	0.103	0.579	16.801182	-91.881133
Nuevo Momón	205.00	1	0	354	6.2	84.7	0.5	6.2	1.4	1.0	0.0	0.0	0.0	90.9	0.5	8.6	0.133	0.638	16.333471	-91.746100

CHIAPAS

33 CARR: Ent. Suschilá - Comitán

CLAVE: 00061

RUTA: CHIS-TAB

AÑO: 2025

LUGAR	ESTACION				CLASIFICACION VEHICULAR EN PORCIENTO										COORDENADAS					
	KM	TE	SC	TDPA	M	A	B	C2	C3	T3S2	T3S3	T3S2R4	OTROS	A	B	C	K'	D	LATITUD	LONGITUD
Nuevo Momón	205.00	3	0	563	8.7	82.2	0.3	7.9	0.8	0.1	0.0	0.0	0.0	90.9	0.3	8.8	0.085	0.563	16.335568	-91.753925
Las Margaritas	242.50	1	0	4625	7.1	85.7	0.2	5.4	1.1	0.3	0.1	0.1	0.0	92.8	0.2	7.0	0.083	0.512	16.323741	-91.975923
Las Margaritas	242.50	3	1	4126	14.8	82.4	0.2	2.2	0.3	0.1	0.0	0.0	0.0	97.2	0.2	2.6	0.086	0.533	16.312341	-91.995051
Las Margaritas	242.50	3	2	3967	14.8	82.3	0.3	2.1	0.3	0.2	0.0	0.0	0.0	97.1	0.3	2.6	0.093	0.533	16.312248	-91.995052
Caxh	257.50	1	0	7446	9.9	87.4	0.1	1.3	0.7	0.4	0.1	0.1	0.0	97.3	0.1	2.6	0.084	0.737	16.270903	-92.082828
Caxh	257.50	3	1	8321	13.8	82.0	0.2	3.0	0.5	0.3	0.1	0.1	0.0	95.8	0.2	4.0	0.075	0.531	16.259163	-92.108292
Caxh	257.50	3	2	8181	13.9	82.0	0.2	3.0	0.4	0.3	0.1	0.1	0.0	95.9	0.2	3.9	0.075	0.531	16.259099	-92.108264
Comitán	261.00																			

34 CARR: Estación Palenque - La Libertad

CLAVE: 07002

RUTA: CHIS-010

AÑO: 2025

LUGAR	ESTACION				CLASIFICACION VEHICULAR EN PORCIENTO										COORDENADAS					
	KM	TE	SC	TDPA	M	A	B	C2	C3	T3S2	T3S3	T3S2R4	OTROS	A	B	C	K'	D	LATITUD	LONGITUD
Estación Palenque	0.00	3	0	4192	20.0	60.7	0.5	7.5	5.8	3.4	1.2	0.4	0.5	80.7	0.5	18.8	0.075	0.554	17.549484	-91.983218
La Libertad	40.00	1	0	1150	13.1	78.1	0.5	6.0	0.3	1.3	0.7	0.0	0.0	91.2	0.5	8.3	0.094	0.537	17.681126	-91.727492

35 CARR: Gregorio Méndez Magaña - Reforma de Ocampo

CLAVE: 00103

RUTA: CHIS

AÑO: 2025

LUGAR	ESTACION				CLASIFICACION VEHICULAR EN PORCIENTO										COORDENADAS					
	KM	TE	SC	TDPA	M	A	B	C2	C3	T3S2	T3S3	T3S2R4	OTROS	A	B	C	K'	D	LATITUD	LONGITUD
Gregorio Méndez Magaña	0.00	3	0	1073	27.5	60.7	1.4	4.7	2.8	0.9	1.5	0.5	0.0	88.2	1.4	10.4	0.081	0.529	17.446436	-91.595981
Lim. Edos. Term. Tab. Ppia. Chis.	3.00																			
T. C. Benemérito de Las Américas - Palenque	21.00	1	0	3103	8.9	83.1	1.4	4.8	1.0	0.3	0.2	0.1	0.2	92.0	1.4	6.6	0.081	0.508	17.322854	-91.693005
Reforma de Ocampo	22.00																			

36 CARR: Independencia - Buenos Aires

CLAVE: 07098

RUTA: CHIS

AÑO: 2025

LUGAR	ESTACION				CLASIFICACION VEHICULAR EN PORCIENTO										COORDENADAS					
	KM	TE	SC	TDPA	M	A	B	C2	C3	T3S2	T3S3	T3S2R4	OTROS	A	B	C	K'	D	LATITUD	LONGITUD
Independencia	0.00																			
El Porvenir	139.00	3	0	1686	7.0	85.0	0.7	5.7	1.0	0.4	0.2	0.0	0.0	92.0	0.7	7.3	0.083	0.507	15.448412	-92.290487
Buenos Aires	159.00	1	0	1362	7.2	84.3	1.2	5.6	0.9	0.6	0.2	0.0	0.0	91.5	1.2	7.3	0.105	0.559	15.334861	-92.277699

CHIAPAS

37 CARR: Las Limas - La Concordia

CLAVE: 07028

RUTA: CHIS

AÑO: 2025

LUGAR	ESTACION				CLASIFICACION VEHICULAR EN PORCIENTO													COORDENADAS		
	KM	TE	SC	TDPA	M	A	B	C2	C3	T3S2	T3S3	T3S2R4	OTROS	A	B	C	K'	D	LATITUD	LONGITUD
T. C. Tuxtla Gutiérrez - Angostura	0.00	3	0	5486	5.9	81.2	0.6	7.5	1.1	2.9	0.5	0.2	0.1	87.1	0.6	12.3	0.079	0.587	16.606247	-92.993011
Revolución Mexicana	83.00	1	0	3231	3.1	86.5	1.2	6.5	0.7	1.3	0.4	0.2	0.1	89.6	1.2	9.2	0.086	0.548	16.175914	-93.056513
La Concordia	135.00																			

38 CARR: Libramiento Sur de Tuxtla Gutiérrez

CLAVE: 07578

RUTA: CHIS

AÑO: 2025

LUGAR	ESTACION				CLASIFICACION VEHICULAR EN PORCIENTO													COORDENADAS		
	KM	TE	SC	TDPA	M	A	B	C2	C3	T3S2	T3S3	T3S2R4	OTROS	A	B	C	K'	D	LATITUD	LONGITUD
T. C. Tapanatepec - Tuxtla Gutiérrez	0.00	3	1	19553	4.0	86.3	1.0	5.7	1.1	0.6	0.2	0.8	0.3	90.3	1.0	8.7	0.069	0.506	16.752528	-93.141894
T. C. Tapanatepec - Tuxtla Gutiérrez	0.00	3	2	17438	4.2	85.6	1.2	6.0	1.3	0.4	0.2	0.6	0.5	89.8	1.2	9.0	0.074	0.506	16.752608	-93.141781
T. C. Tuxtla Gutiérrez - Cd. Cuauhtémoc	9.20	1	1	27354	5.1	87.0	1.1	4.5	0.9	0.6	0.3	0.4	0.1	92.1	1.1	6.8	0.070	0.543	16.740877	-93.079067
T. C. Tuxtla Gutiérrez - Cd. Cuauhtémoc	9.20	1	2	28098	5.3	85.9	1.4	4.6	1.0	0.6	0.4	0.5	0.3	91.2	1.4	7.4	0.084	0.543	16.741020	-93.079019

39 CARR: Ocosingo - Comitán

CLAVE: 07092

RUTA: CHIS

AÑO: 2025

LUGAR	ESTACION				CLASIFICACION VEHICULAR EN PORCIENTO													COORDENADAS		
	KM	TE	SC	TDPA	M	A	B	C2	C3	T3S2	T3S3	T3S2R4	OTROS	A	B	C	K'	D	LATITUD	LONGITUD
Ocosingo	0.00	3	0	12174	4.7	92.8	0.4	0.6	0.6	0.4	0.1	0.3	0.1	97.5	0.4	2.1	0.101	0.573	16.896424	-92.074185
Altamirano	24.00	1	0	2199	2.6	92.3	0.7	3.3	0.5	0.3	0.1	0.2	0.0	94.9	0.7	4.4	0.078	0.725	16.745415	-92.040938
Altamirano	24.00	3	0	2728	19.5	76.8	0.5	1.6	0.6	0.3	0.4	0.2	0.1	96.3	0.5	3.2	0.082	0.549	16.716868	-92.043460
La Mendoza	30.00	1	0	1711	23.9	67.6	0.9	5.4	1.1	0.6	0.3	0.2	0.0	91.5	0.9	7.6	0.079	0.600	16.684984	-92.022481
Comitán	100.00	1	0	6430	12.5	79.9	0.6	1.3	1.0	2.9	1.0	0.6	0.2	92.4	0.6	7.0	0.081	0.583	16.281754	-92.124052

40 CARR: Ocozocoautla - Revolución Mexicana

CLAVE: 07571

RUTA: CHIS-053-230

AÑO: 2025

LUGAR	ESTACION				CLASIFICACION VEHICULAR EN PORCIENTO													COORDENADAS		
	KM	TE	SC	TDPA	M	A	B	C2	C3	T3S2	T3S3	T3S2R4	OTROS	A	B	C	K'	D	LATITUD	LONGITUD
Ocozocoautla	0.00	3	0	7904	9.1	74.2	1.3	7.7	3.1	2.9	0.5	1.0	0.2	83.3	1.3	15.4	0.084	0.568	16.750975	-93.384067
Nuevo México	36.00	3	0	3869	6.1	80.1	1.2	7.1	1.3	2.6	0.8	0.6	0.2	86.2	1.2	12.6	0.081	0.519	16.453439	-93.434656
T. Der. Cristóbal Obregón	40.30	3	0	3275	4.8	79.8	1.3	8.0	1.6	2.4	1.0	0.9	0.2	84.6	1.3	14.1	0.077	0.514	16.415039	-93.416671
T. Izq. Tuxtla Gutiérrez	58.60	1	0	4536	6.0	77.3	2.2	7.8	2.4	2.7	0.8	0.7	0.1	83.3	2.2	14.5	0.094	0.532	16.318545	-93.336727
T. Izq. Tuxtla Gutiérrez	58.60	3	0	7371	6.2	83.1	0.8	4.0	1.5	2.9	0.5	0.7	0.3	89.3	0.8	9.9	0.087	0.527	16.313650	-93.325813
Villa Flores	71.00	1	0	9529	5.8	81.5	0.7	6.1	1.2	3.1	0.8	0.5	0.3	87.3	0.7	12.0	0.079	0.532	16.265843	-93.266319
Villa de Corzo	79.00	1	0	11747	14.1	76.4	0.5	4.2	0.7	3.1	0.5	0.3	0.2	90.5	0.5	9.0	0.072	0.514	16.207229	-93.265560
Revolución Mexicana	103.00	1	0	3942	22.0	71.6	0.5	3.1	0.6	1.8	0.1	0.2	0.1	93.6	0.5	5.9	0.095	0.560	16.167513	-93.089589

CHIAPAS

41 CARR: Paso de Cunduacán - Estación Juárez

CLAVE: 00588

RUTA: TAB-CHIS

AÑO: 2025

LUGAR	ESTACION				CLASIFICACION VEHICULAR EN PORCIENTO													COORDENADAS		
	KM	TE	SC	TDPA	M	A	B	C2	C3	T3S2	T3S3	T3S2R4	OTROS	A	B	C	K'	D	LATITUD	LONGITUD
Paso de Cunduacán	0.00	3	0	10023	6.6	83.8	0.4	5.7	0.9	1.2	0.6	0.5	0.3	90.4	0.4	9.2	0.115	0.606	17.958666	-93.138492
Lim. Edos. Term. Tab. Ppia. Chis.	9.00																			
Santa Teresa 2º Secc.	18.00	3	0	2315	11.0	77.9	0.4	7.0	1.4	1.9	0.3	0.0	0.1	88.9	0.4	10.7	0.089	0.553	17.766718	-93.169205
Estación Juárez	57.80	1	0	2879	14.3	77.2	0.3	5.1	1.0	1.6	0.2	0.1	0.2	91.5	0.3	8.2	0.083	0.575	17.621939	-93.166892

42 CARR: Puerto Caté - San Cristóbal de Las Casas

CLAVE: 07097

RUTA: CHIS

AÑO: 2025

LUGAR	ESTACION				CLASIFICACION VEHICULAR EN PORCIENTO													COORDENADAS		
	KM	TE	SC	TDPA	M	A	B	C2	C3	T3S2	T3S3	T3S2R4	OTROS	A	B	C	K'	D	LATITUD	LONGITUD
Puerto Caté	0.00	3	0	1427	2.3	84.4	4.4	5.0	0.8	1.7	0.6	0.6	0.2	86.7	4.4	8.9	0.090	0.504	16.995278	-92.820222
Larrazar	20.00	1	0	4733	4.7	89.0	0.3	1.5	0.2	2.7	0.7	0.6	0.3	93.7	0.3	6.0	0.075	0.588	16.885564	-92.724500
T. Izq. Chamula	32.00	1	0	6550	5.5	84.1	0.9	3.9	0.6	3.5	0.8	0.5	0.2	89.6	0.9	9.5	0.081	0.510	16.790582	-92.698269
San Cristóbal de Las Casas	40.00	1	0	14242	7.9	87.1	0.6	2.4	0.6	0.3	0.5	0.4	0.2	95.0	0.6	4.4	0.072	0.573	16.755675	-92.670128

43 CARR: Ramal a Huehuetán

CLAVE: 07360

RUTA: CHIS

AÑO: 2025

LUGAR	ESTACION				CLASIFICACION VEHICULAR EN PORCIENTO													COORDENADAS		
	KM	TE	SC	TDPA	M	A	B	C2	C3	T3S2	T3S3	T3S2R4	OTROS	A	B	C	K'	D	LATITUD	LONGITUD
T. C. Tapanatepec - Talismán	0.00	3	1	4137	2.6	93.6	0.1	2.8	0.3	0.2	0.1	0.2	0.1	96.2	0.1	3.7	0.100	0.555	15.010472	-92.398072
T. C. Tapanatepec - Talismán	0.00	3	2	4121	2.8	93.5	0.2	2.5	0.3	0.3	0.1	0.2	0.1	96.3	0.2	3.5	0.127	0.555	15.010590	-92.398366
Huehuetán	2.50																			

44 CARR: Ramal a Mazatán

CLAVE: 07560

RUTA: CHIS-219

AÑO: 2025

LUGAR	ESTACION				CLASIFICACION VEHICULAR EN PORCIENTO													COORDENADAS		
	KM	TE	SC	TDPA	M	A	B	C2	C3	T3S2	T3S3	T3S2R4	OTROS	A	B	C	K'	D	LATITUD	LONGITUD
T. C. Tapanatepec - Talismán	0.00	3	1	3260	14.5	72.7	0.6	8.9	1.1	1.4	0.5	0.2	0.1	87.2	0.6	12.2	0.105	0.553	14.926477	-92.375358
T. C. Tapanatepec - Talismán	0.00	3	2	3103	14.7	72.7	0.4	8.7	0.9	1.6	0.5	0.4	0.1	87.4	0.4	12.2	0.098	0.553	14.926441	-92.375308
Mazatán	12.00																			

45 CARR: Ramal a Salto del Agua

CLAVE: 00069

RUTA: TAB-CHIS

AÑO: 2025

LUGAR	ESTACION				CLASIFICACION VEHICULAR EN PORCIENTO													COORDENADAS		
	KM	TE	SC	TDPA	M	A	B	C2	C3	T3S2	T3S3	T3S2R4	OTROS	A	B	C	K'	D	LATITUD	LONGITUD
T. C. Villahermosa - Francisco Escárcega	0.00	3	0	1854	7.1	70.0	2.4	2.2	4.4	6.0	3.1	4.5	0.3	77.1	2.4	20.5	0.093	0.595	17.664987	-92.435975

CHIAPAS

45 CARR: Ramal a Salto del Agua

CLAVE: 00069

RUTA: TAB-CHIS

AÑO: 2025

LUGAR	ESTACION				CLASIFICACION VEHICULAR EN PORCIENTO										COORDENADAS						
	KM	TE	SC	TDPA	M	A	B	C2	C3	T3S2	T3S3	T3S2R4	OTROS	A	B	C	K'	D	LATITUD	LONGITUD	
Lim. Edos. Term. Tab. Ppia. Chis.	12.00																				
Salto del Agua	17.00	1	0	2346	7.4	85.3	0.7	3.9	0.6	1.5	0.5	0.0	0.1	92.7	0.7	6.6	0.102	0.563	17.559526	-92.354063	

46 CARR: Ramal Zona Arqueológica " Bonampak "

CLAVE: 07100

RUTA: CHIS

AÑO: 2025

LUGAR	ESTACION				CLASIFICACION VEHICULAR EN PORCIENTO										COORDENADAS						
	KM	TE	SC	TDPA	M	A	B	C2	C3	T3S2	T3S3	T3S2R4	OTROS	A	B	C	K'	D	LATITUD	LONGITUD	
T. C. Benemérito de Las Américas - Palenque	0.00	3	0	734	12.5	85.5	0.2	1.0	0.6	0.0	0.2	0.0	0.0	98.0	0.2	1.8	0.089	0.554	16.798365	-91.105804	
Zona Arqueológica Bonampak	13.00																				

47 CARR: Ramal Zona Arqueológica " Palenque "

CLAVE: 07099

RUTA: CHIS

AÑO: 2025

LUGAR	ESTACION				CLASIFICACION VEHICULAR EN PORCIENTO										COORDENADAS					
	KM	TE	SC	TDPA	M	A	B	C2	C3	T3S2	T3S3	T3S2R4	OTROS	A	B	C	K'	D	LATITUD	LONGITUD
T. C. (Catatzajá - T. C. (Tuxtla Gtz. - Cd. Cuauhtémoc))	0.00	3	0	7099	0.2	88.0	0.3	11.3	0.1	0.1	0.0	0.0	0.0	88.2	0.3	11.5	0.064	0.521	17.503449	-91.995901
Zona Arqueológica Palenque	7.30	1	0	1747	3.8	89.1	1.3	4.5	0.1	0.9	0.3	0.0	0.0	92.9	1.3	5.8	0.085	0.534	17.487502	-92.042426

48 CARR: San Francisco Pujilic - Ent. Comitán

CLAVE: 07093

RUTA: CHIS

AÑO: 2025

LUGAR	ESTACION				CLASIFICACION VEHICULAR EN PORCIENTO										COORDENADAS					
	KM	TE	SC	TDPA	M	A	B	C2	C3	T3S2	T3S3	T3S2R4	OTROS	A	B	C	K'	D	LATITUD	LONGITUD
T. C. Chiapa de Corzo - Amatenango del Valle	0.00	3	0	2843	6.8	77.9	1.2	6.3	1.9	3.2	1.8	0.7	0.2	84.7	1.2	14.1	0.086	0.531	16.272460	-92.444604
Comitán	54.00	1	0	5939	11.6	83.4	0.8	1.7	0.8	0.8	0.5	0.4	0.0	95.0	0.8	4.2	0.085	0.614	16.204316	-92.132354

49 CARR: Tapachula - Nueva Alemania

CLAVE: 07581

RUTA: CHIS-229

AÑO: 2025

LUGAR	ESTACION				CLASIFICACION VEHICULAR EN PORCIENTO										COORDENADAS						
	KM	TE	SC	TDPA	M	A	B	C2	C3	T3S2	T3S3	T3S2R4	OTROS	A	B	C	K'	D	LATITUD	LONGITUD	
Tapachula	0.00	3	0	6826	10.0	87.5	0.3	1.5	0.4	0.1	0.0	0.2	0.0	97.5	0.3	2.2	0.088	0.617	14.957447	-92.254481	
Nueva Alemania	27.20																				

CHIAPAS

50 CARR: Temo - Tila

CLAVE: 07090

RUTA: CHIS

AÑO: 2025

LUGAR	ESTACION				CLASIFICACION VEHICULAR EN PORCIENTO										COORDENADAS					
	KM	TE	SC	TDPA	M	A	B	C2	C3	T3S2	T3S3	T3S2R4	OTROS	A	B	C	K'	D	LATITUD	LONGITUD
Temo	0.00	3	0	3088	7.8	85.2	0.4	2.7	0.8	2.4	0.3	0.4	0.0	93.0	0.4	6.6	0.097	0.505	17.018171	-92.156766
Yajalón	28.00	1	0	3036	13.3	79.8	0.3	2.8	0.8	2.3	0.5	0.2	0.0	93.1	0.3	6.6	0.091	0.567	17.158908	-92.318260
Tila	50.00	1	0	2201	12.2	80.6	0.4	3.0	0.8	2.0	0.6	0.4	0.0	92.8	0.4	6.8	0.109	0.519	17.291992	-92.428910

51 CARR: Tierra y Libertad - Ent. Dr. Domingo Chanona

CLAVE: 07096

RUTA: CHIS

AÑO: 2025

LUGAR	ESTACION				CLASIFICACION VEHICULAR EN PORCIENTO										COORDENADAS					
	KM	TE	SC	TDPA	M	A	B	C2	C3	T3S2	T3S3	T3S2R4	OTROS	A	B	C	K'	D	LATITUD	LONGITUD
T. C. Las Cruces - Arriaga	0.00	3	0	233	14.0	72.3	1.7	6.3	4.4	0.4	0.6	0.3	0.0	86.3	1.7	12.0	0.103	0.500	16.375201	-93.857411
T. C. Ocozocoautla - Revolución Mexicana	60.00	1	0	4237	22.9	68.2	0.6	4.4	0.8	2.5	0.3	0.1	0.2	91.1	0.6	8.3	0.088	0.545	16.345496	-93.408187

52 CARR: Tuxtla Gutiérrez - Portillo Zaragoza

CLAVE: 07574

RUTA: CHIS-133

AÑO: 2025

LUGAR	ESTACION				CLASIFICACION VEHICULAR EN PORCIENTO										COORDENADAS					
	KM	TE	SC	TDPA	M	A	B	C2	C3	T3S2	T3S3	T3S2R4	OTROS	A	B	C	K'	D	LATITUD	LONGITUD
Ent. Periférico Tuxtla Gutiérrez	0.00	3	0	16978	6.7	90.0	0.5	1.4	0.2	0.3	0.3	0.4	0.2	96.7	0.5	2.8	0.078	0.612	16.730112	-93.110511
Suchiapa	19.00	1	0	7821	9.2	87.7	0.3	1.2	0.4	0.2	0.5	0.3	0.2	96.9	0.3	2.8	0.087	0.503	16.637391	-93.092718
Las Cruces	53.50	1	0	2730	8.3	83.5	0.6	5.4	0.5	1.1	0.4	0.0	0.2	91.8	0.6	7.6	0.095	0.529	16.415511	-93.168343
Las Cruces	53.50	3	0	2873	10.6	81.8	0.4	5.3	0.5	1.0	0.3	0.0	0.1	92.4	0.4	7.2	0.076	0.592	16.397523	-93.206408
Portillo de Tacubaya	79.00	1	0	4033	12.0	79.3	0.6	4.7	1.1	1.5	0.3	0.2	0.3	91.3	0.6	8.1	0.085	0.605	16.317515	-93.330564

53 CARR: Zapatero - T. C. (Jalapa - Jonuta)

CLAVE: 00061

RUTA: CHIS-TAB

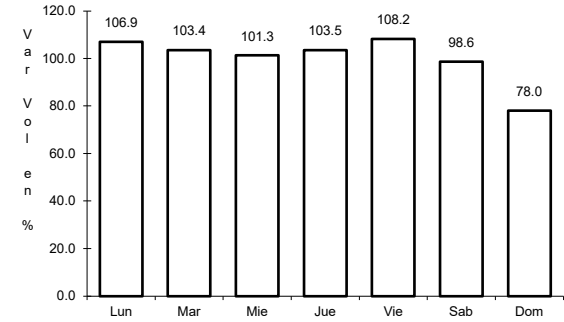
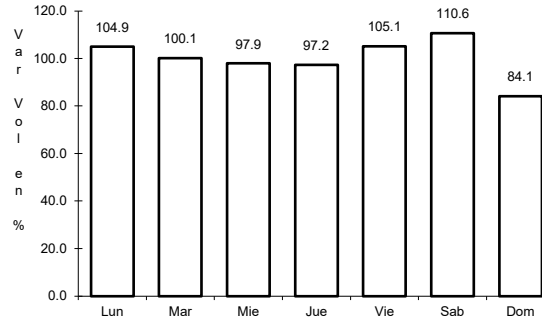
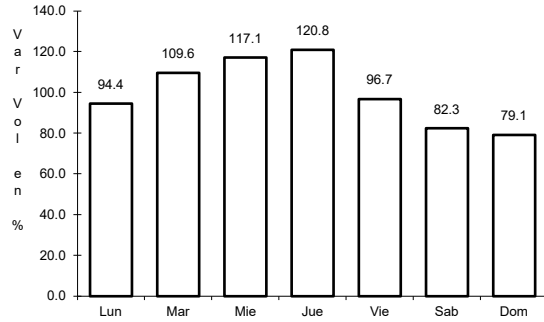
AÑO: 2025

LUGAR	ESTACION				CLASIFICACION VEHICULAR EN PORCIENTO										COORDENADAS					
	KM	TE	SC	TDPA	M	A	B	C2	C3	T3S2	T3S3	T3S2R4	OTROS	A	B	C	K'	D	LATITUD	LONGITUD
T. C. Villahermosa - Francisco Escárcega	0.00	3	0	1886	18.4	73.5	0.4	4.2	1.4	1.4	0.4	0.2	0.1	91.9	0.4	7.7	0.089	0.542	17.699060	-92.131865
Lim. Edos. Term. Chis. Ppia. Tab.	16.00																			
T. C. Jalapa - Jonuta	41.00	1	0	1658	15.6	76.2	1.3	5.3	0.8	0.3	0.2	0.2	0.1	91.8	1.3	6.9	0.085	0.553	18.092838	-92.150452

1 CARR: Benemérito de Las Américas - Palenque

CLAVE: 07095

ruta: MEX-307



Km: 42.00 Tipo: 3 Sent: 0

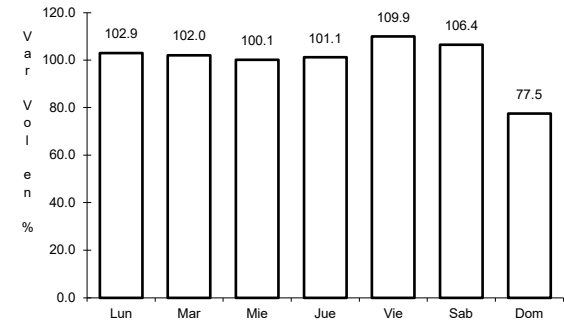
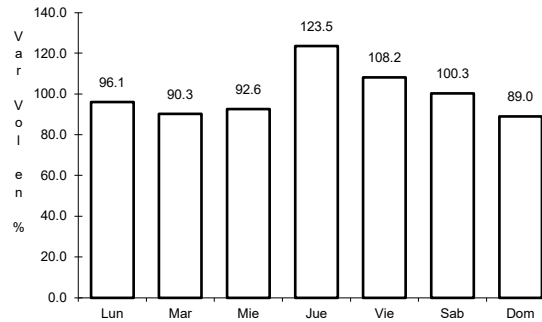
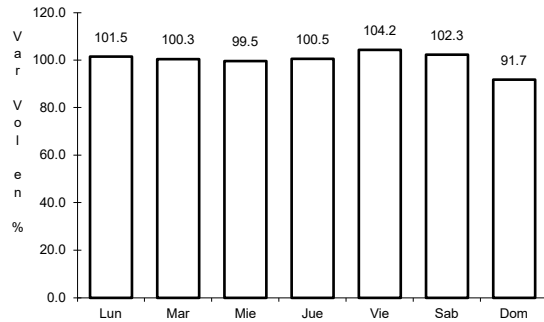
Km: 160.00 Tipo: 1 Sent: 0

Km: 194.00 Tipo: 1 Sent: 0

2 CARR: Catazajá - T. C. (Tuxtla Gtz. - Cd. Cuauhtémoc)

CLAVE: 07582

ruta: MEX-199-307



Km: 0.22 Tipo: 3 Sent: 0

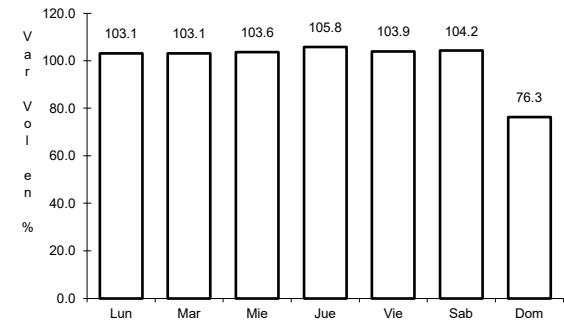
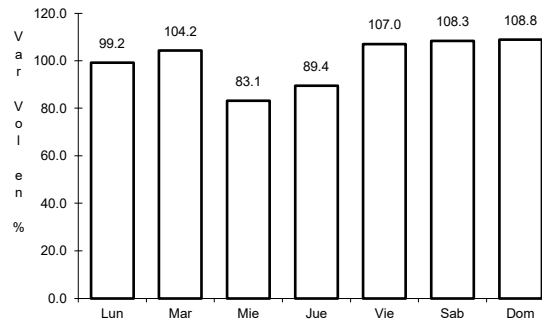
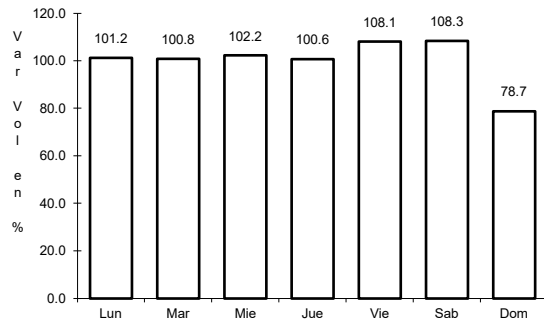
Km: 85.60 Tipo: 1 Sent: 0

Km: 229.65 Tipo: 1 Sent: 0

3 CARR: El Suspiro - Tenosique

CLAVE: 00276

ruta: MEX-203



Km: 0.00 Tipo: 3 Sent: 0

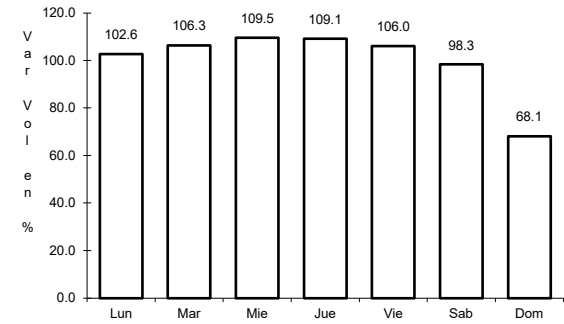
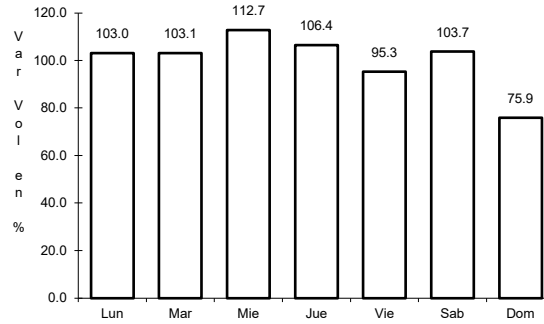
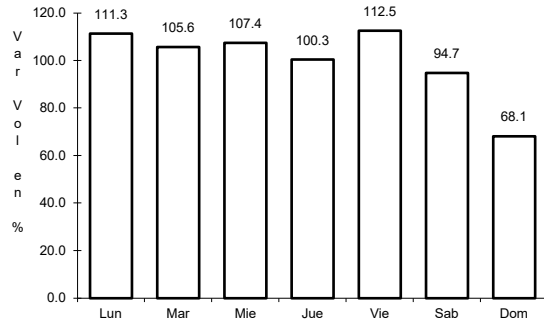
Km: 32.60 Tipo: 1 Sent: 0

Km: 53.00 Tipo: 3 Sent: 0

4 CARR: Ent. Jaritas - Ciudad Hidalgo

CLAVE: 07094

ruta: MEX-225



Km: 0.00                      Tipo: 3                      Sent: 0

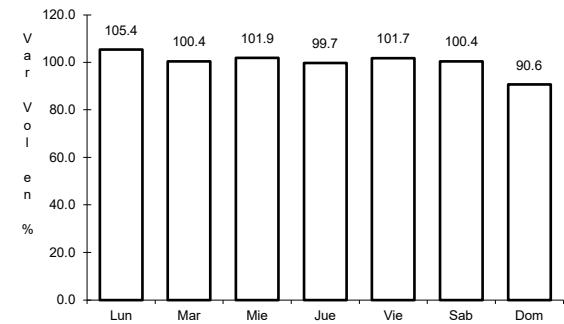
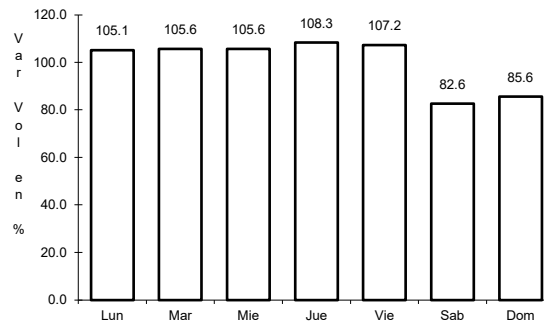
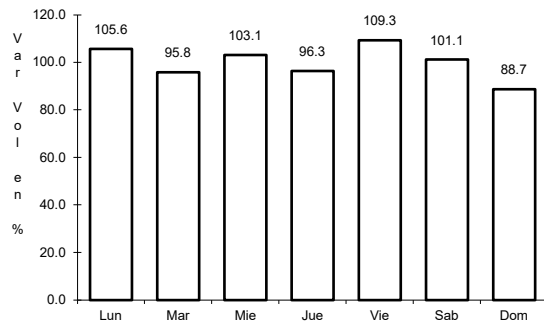
Km: 33.35                      Tipo: 1                      Sent: 0

Km: 49.00                      Tipo: 1                      Sent: 0

5 CARR: Huixtla - El Jocote

CLAVE: 07577

ruta: MEX-211



Km: 0.00                      Tipo: 3                      Sent: 0

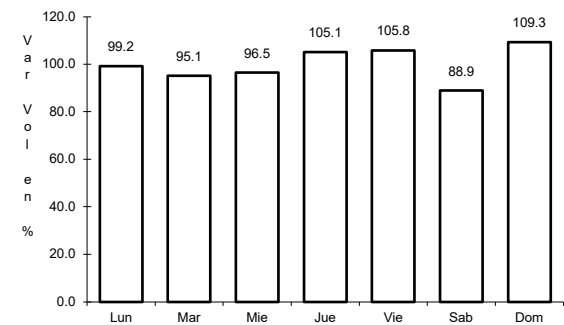
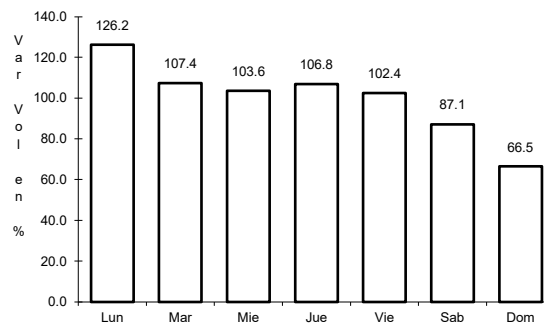
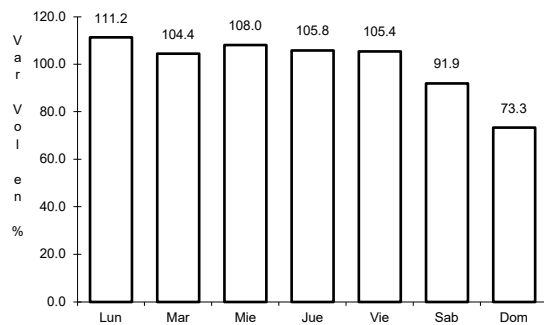
Km: 57.00                      Tipo: 1                      Sent: 0

Km: 126.00                      Tipo: 1                      Sent: 0

6 CARR: La Trinitaria - Benemérito de Las Américas

CLAVE: 07267

ruta: MEX-307



Km: 0.00                      Tipo: 3                      Sent: 0

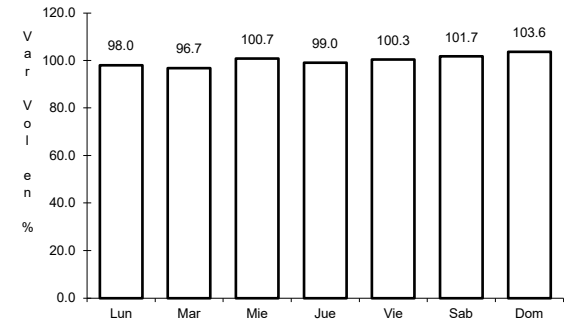
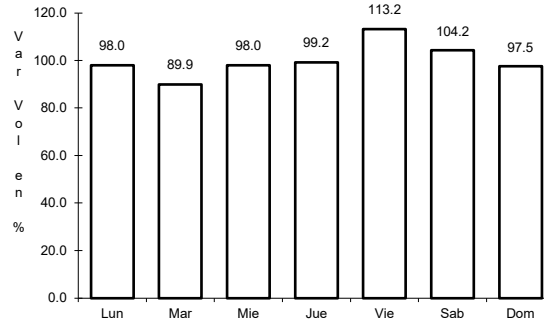
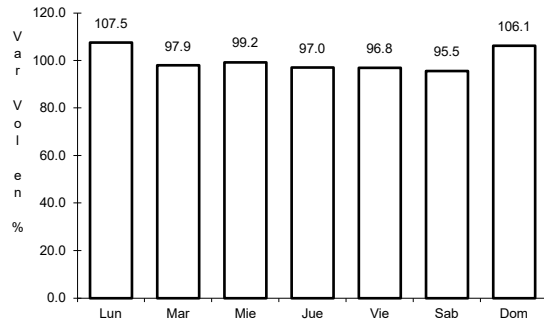
Km: 39.76                      Tipo: 3                      Sent: 0

Km: 72.00                      Tipo: 3                      Sent: 0

7 CARR: Las Cruces - Arriaga

CLAVE: 07196

ruta: MEX-190



Km: 0.00                      Tipo: 3                      Sent: 0

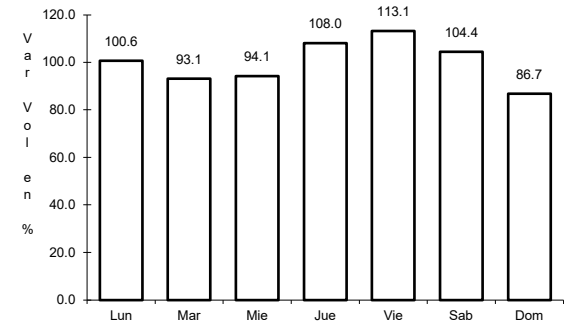
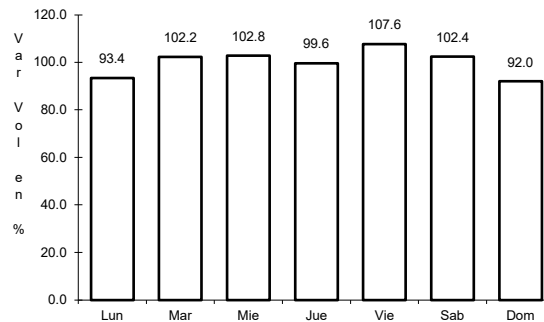
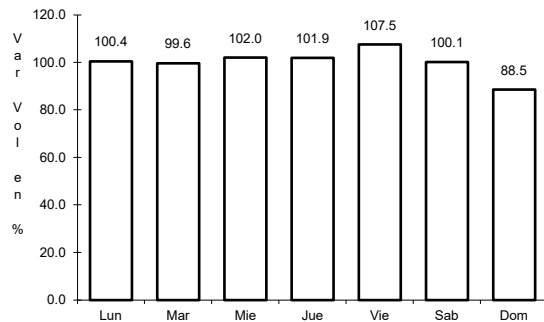
Km: 27.90                      Tipo: 3                      Sent: 0

Km: 49.00                      Tipo: 1                      Sent: 0

8 CARR: Libramiento de Arriaga

CLAVE:

ruta: MEX-200



Km: 0.00                      Tipo: 3                      Sent: 0

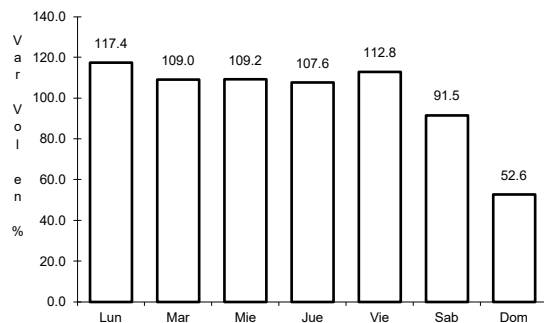
Km: 2.60                      Tipo: 1                      Sent: 0

Km: 7.50                      Tipo: 1                      Sent: 0

9 CARR: Libramiento de Ciudad Hidalgo Chis.

CLAVE:

ruta: MEX-225

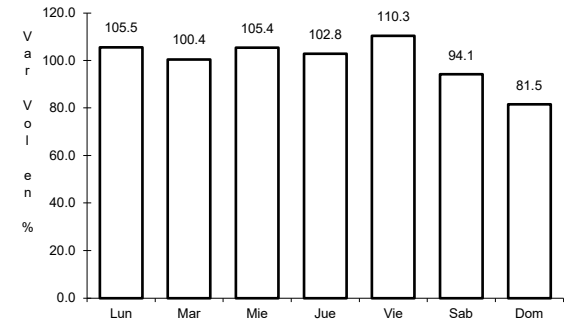
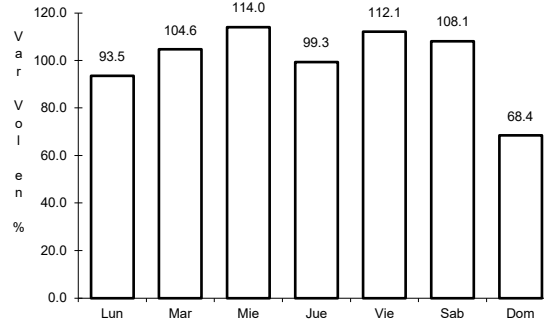
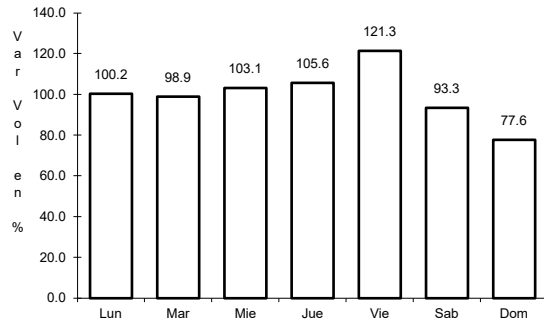


Km: 5.00                      Tipo: 3                      Sent: 0

10 CARR: Libramiento de Huixtla

CLAVE:

ruta: MEX-200



Km: 0.00

Tipo: 3

Sent: 1

Km: 0.00

Tipo: 3

Sent: 2

Km: 5.80

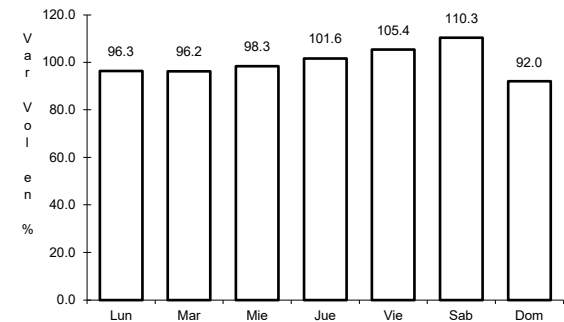
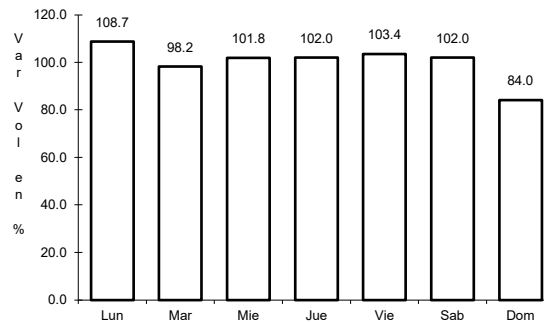
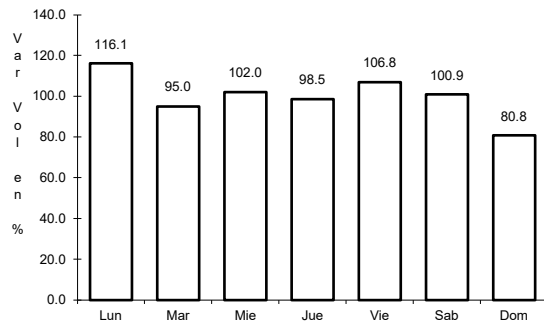
Tipo: 3

Sent: 1

11 CARR: Libramiento de Ocozacoatlá

CLAVE: 07583

ruta: MEX-190



Km: 0.00

Tipo: 3

Sent: 0

Km: 5.54

Tipo: 1

Sent: 0

Km: 9.00

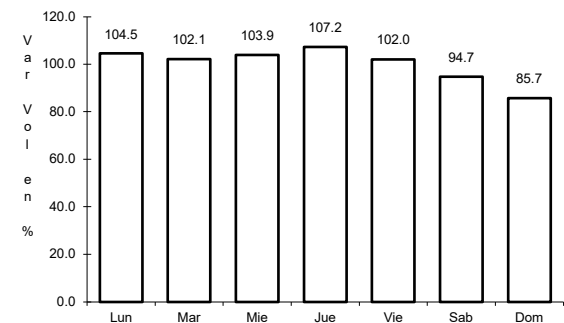
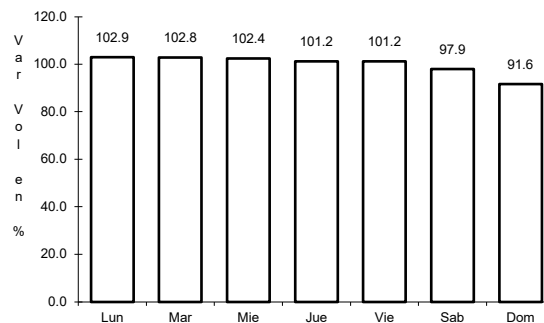
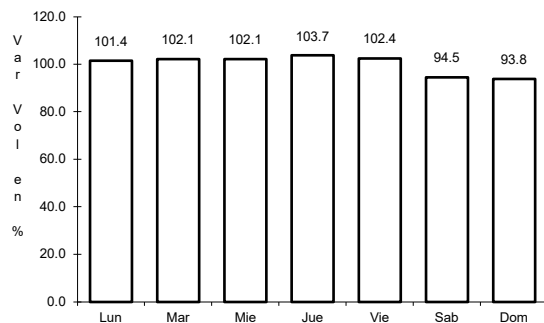
Tipo: 1

Sent: 0

12 CARR: Libramiento Sur de Tuxtla Gutiérrez (Dr. Manuel Velasco)

CLAVE:

ruta: MEX-190



Km: 0.00

Tipo: 3

Sent: 0

Km: 15.94

Tipo: 3

Sent: 0

Km: 22.10

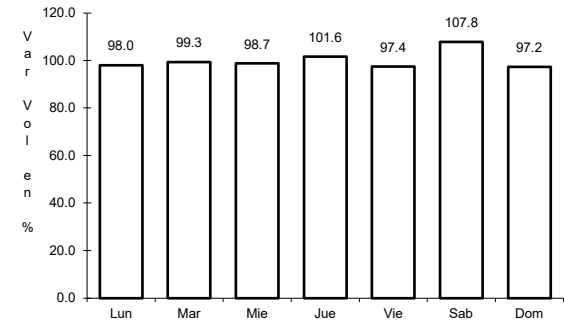
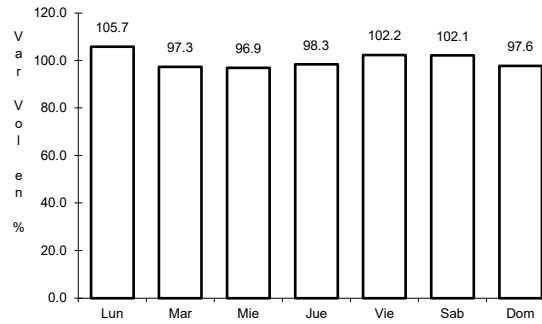
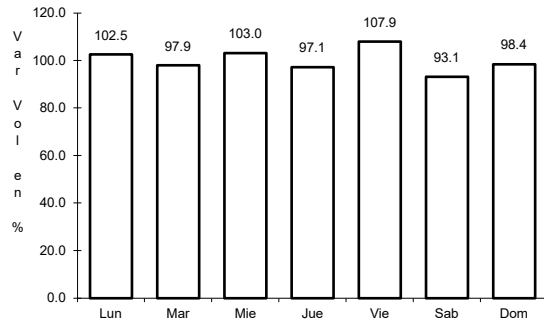
Tipo: 3

Sent: 0

13 CARR: Malpaso - El Bellote

CLAVE: 00137

ruta: MEX-187



Km: 70.12      Tipo: 1      Sent: 0

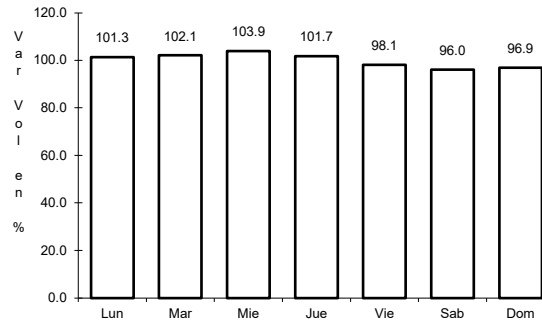
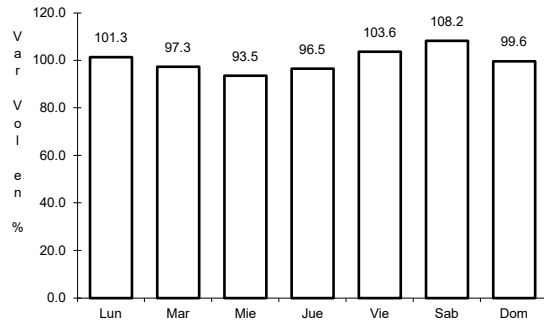
Km: 134.70      Tipo: 3      Sent: 0

Km: 182.00      Tipo: 3      Sent: 0

14 CARR: Ocozocoautla - Ent. El Sabino

CLAVE: 07579

ruta: MEX-190



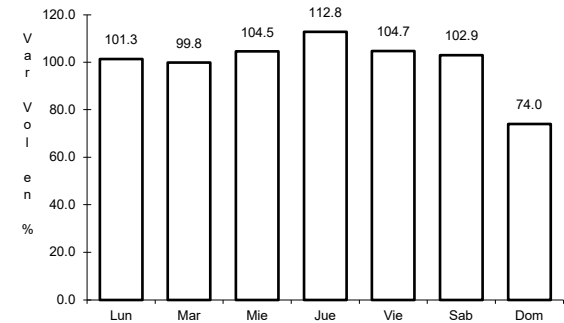
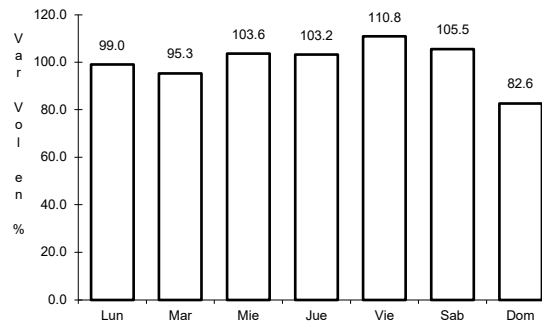
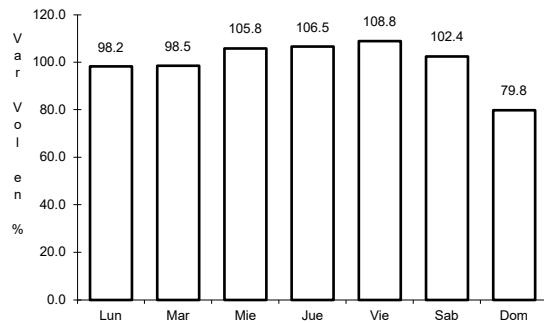
Km: 7.85      Tipo: 3      Sent: 0

Km: 18.25      Tipo: 1      Sent: 0

15 CARR: Ramal a Cd. Hidalgo

CLAVE: 07274

ruta: MEX-200



Km: 0.00      Tipo: 3      Sent: 0

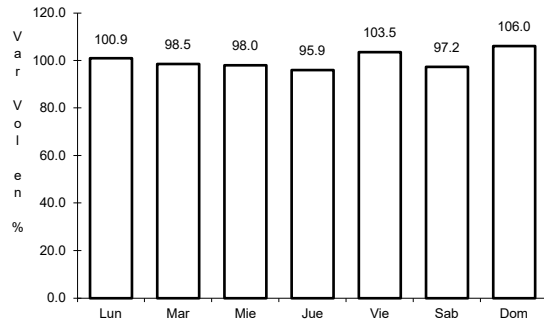
Km: 15.30      Tipo: 3      Sent: 0

Km: 27.00      Tipo: 1      Sent: 0

16 CARR: Ramal a La Gloria

CLAVE: 07091

ruta: MEX-200



Km: 0.00

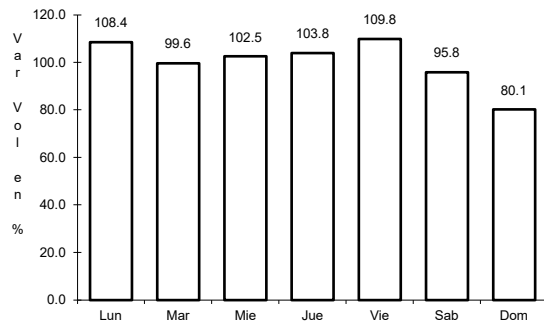
Tipo: 3

Sent: 0

17 CARR: Ramal a Paredón

CLAVE: 07269

ruta: MEX-200



Km: 0.00

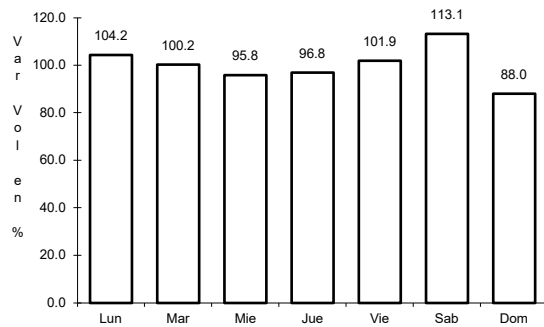
Tipo: 3

Sent: 0

18 CARR: Ramal a Puerto Arista

CLAVE: 07270

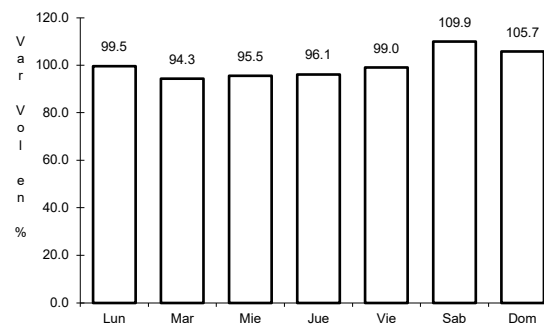
ruta: MEX-200



Km: 0.00

Tipo: 3

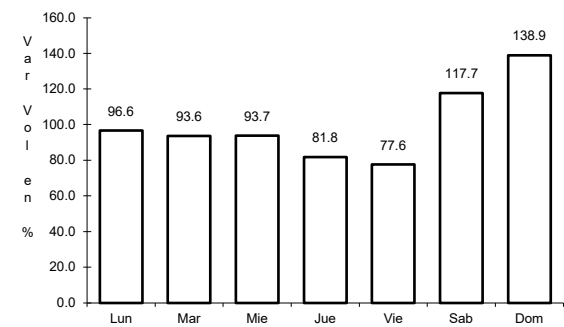
Sent: 0



Km: 11.00

Tipo: 3

Sent: 0



Km: 17.00

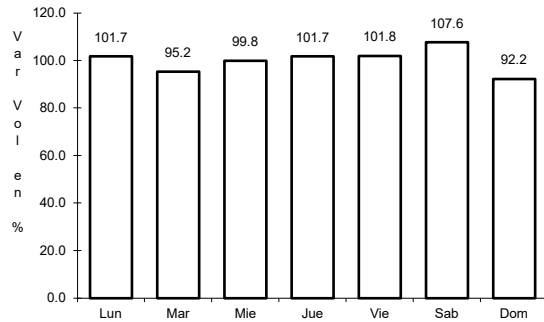
Tipo: 1

Sent: 0

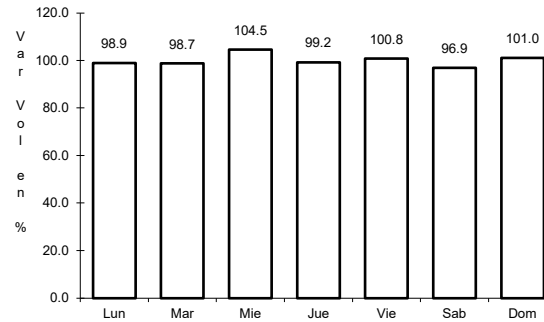
19 CARR: Ramal a Unión Juárez

CLAVE: 07273

ruta: MEX-200



Km: 5.00                      Tipo: 1                      Sent: 0

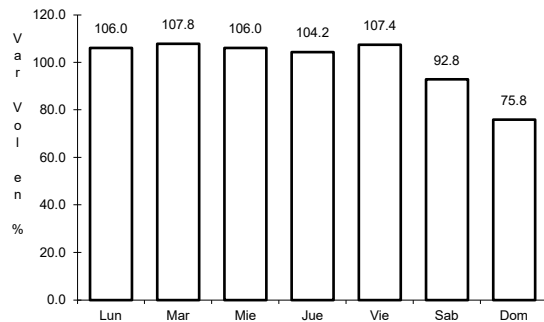


Km: 22.00                      Tipo: 1                      Sent: 0

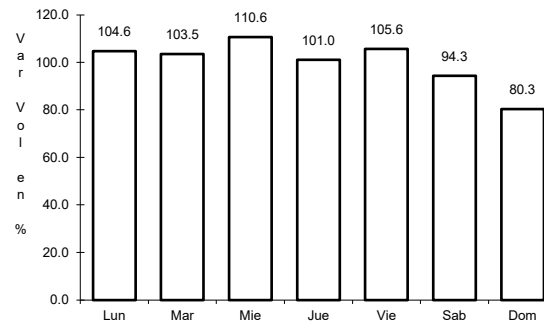
20 CARR: Tapachula - Puerto Madero

CLAVE: 07018

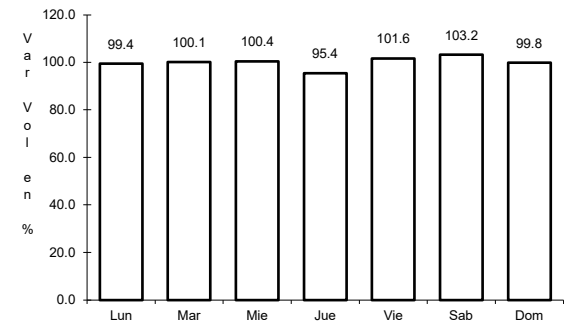
ruta: MEX-225



Km: 0.00                      Tipo: 3                      Sent: 1



Km: 0.00                      Tipo: 3                      Sent: 2

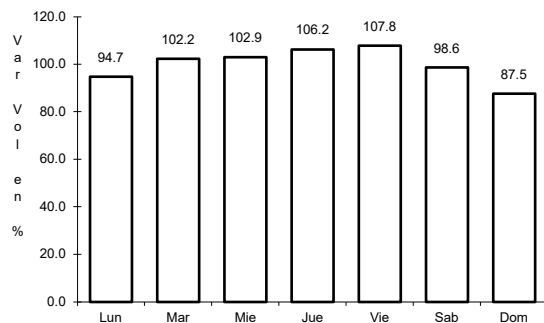


Km: 27.00                      Tipo: 1                      Sent: 0

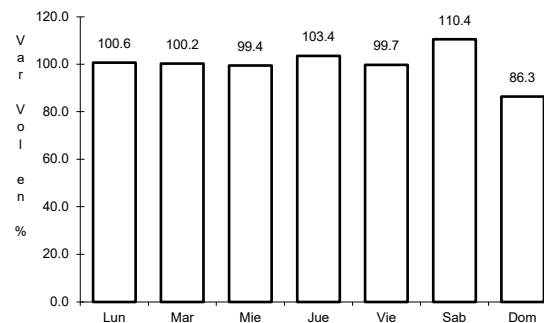
21 CARR: Tapanatepec - Talismán

CLAVE: 00075

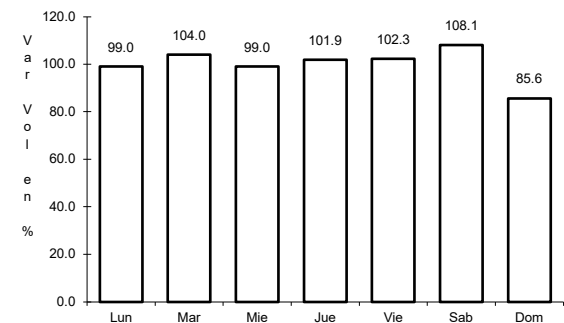
ruta: MEX-200



Km: 0.00                      Tipo: 3                      Sent: 0



Km: 45.00                      Tipo: 1                      Sent: 0

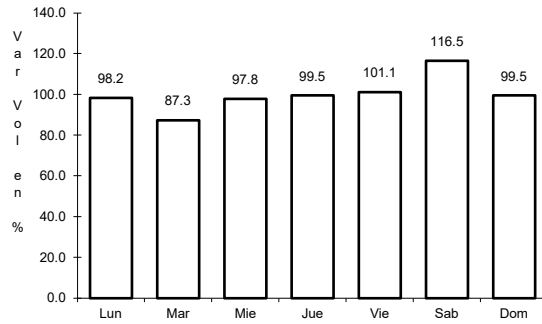


Km: 310.77                      Tipo: 1                      Sent: 0

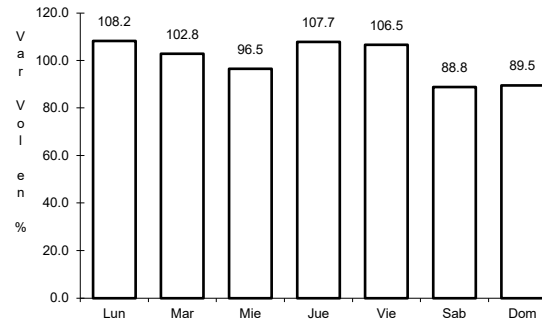
22 CARR: Tapanatepec - Tuxtla Gutiérrez

CLAVE: 00060

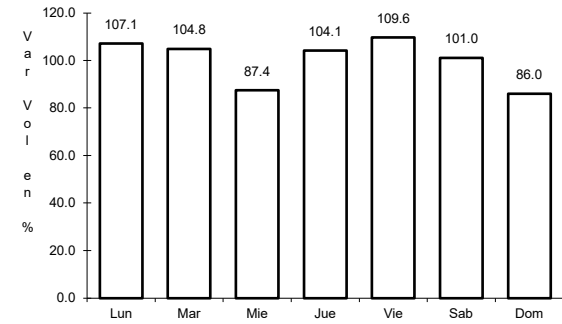
ruta: MEX-190



Km: 0.00                      Tipo: 3                      Sent: 0



Km: 159.00                      Tipo: 1                      Sent: 1

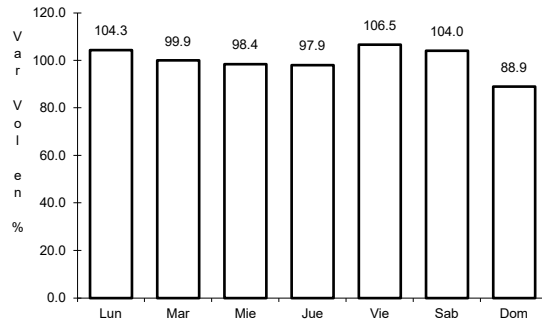


Km: 159.00                      Tipo: 1                      Sent: 2

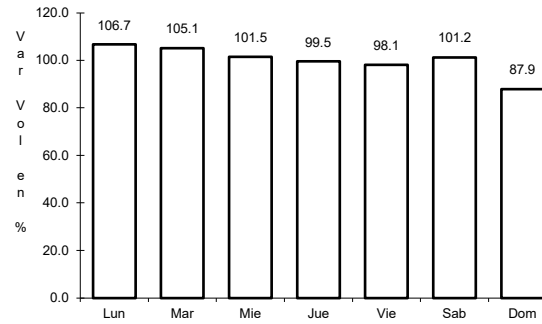
23 CARR: Terán - Chicoasén

CLAVE: 07072

ruta: MEX-190



Km: 0.00                      Tipo: 3                      Sent: 0

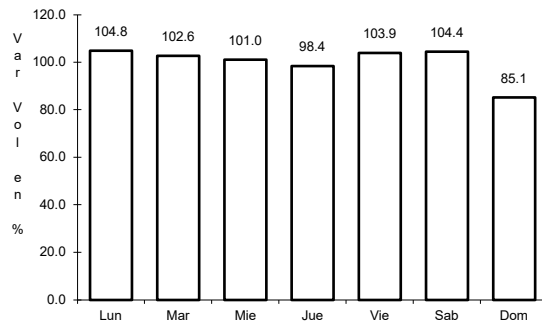


Km: 14.00                      Tipo: 1                      Sent: 0

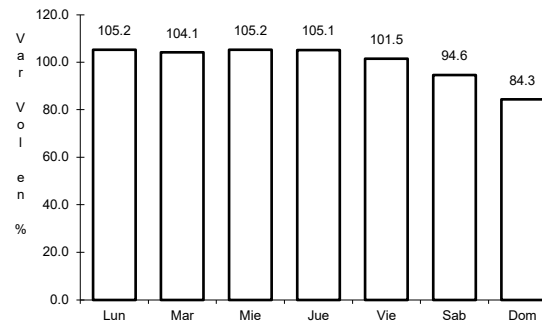
24 CARR: Tuxtla Gutiérrez - Angostura

CLAVE: 07584

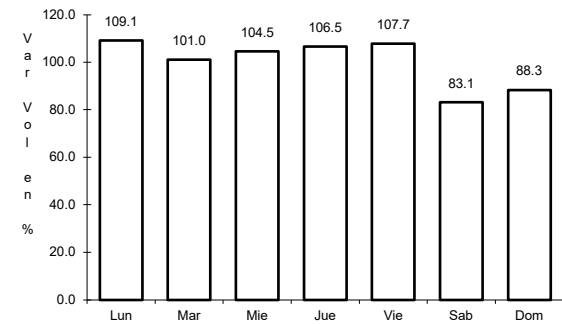
ruta: MEX-190



Km: 0.00                      Tipo: 3                      Sent: 1



Km: 0.00                      Tipo: 3                      Sent: 2

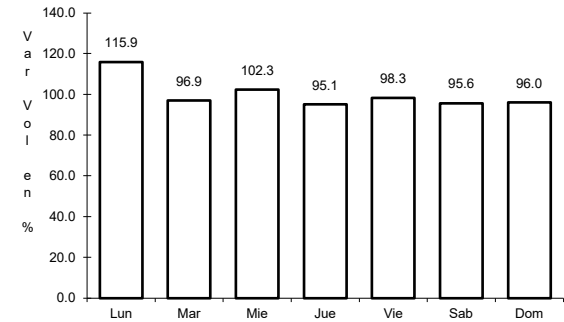
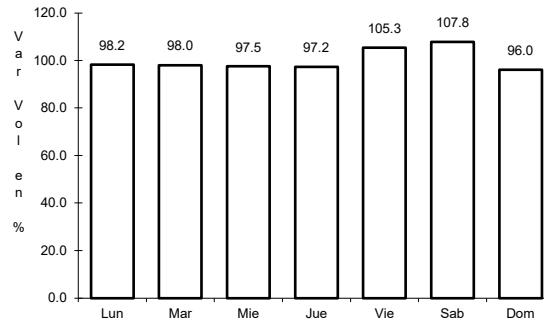
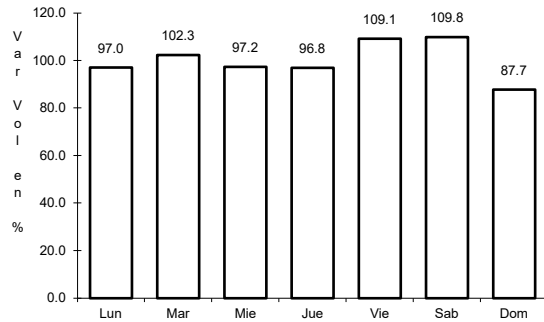


Km: 52.00                      Tipo: 1                      Sent: 0

25 CARR: Tuxtla Gutiérrez - Cd. Cuauhtémoc

CLAVE: 07061

ruta: MEX-190



Km: 7.50      Tipo: 1      Sent: 1

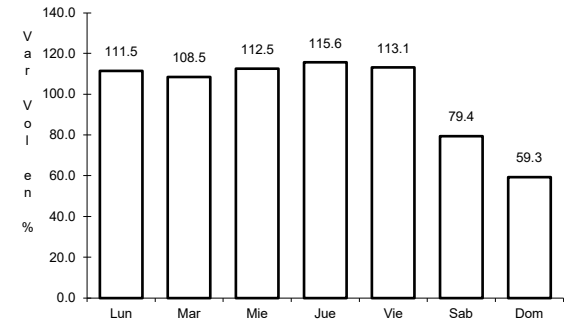
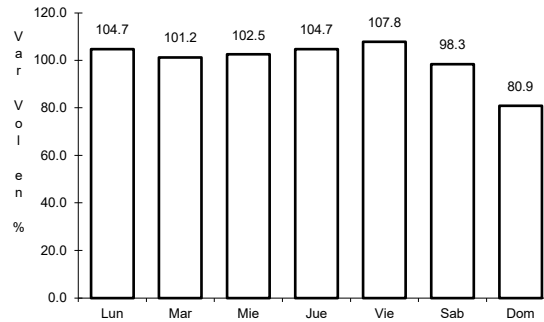
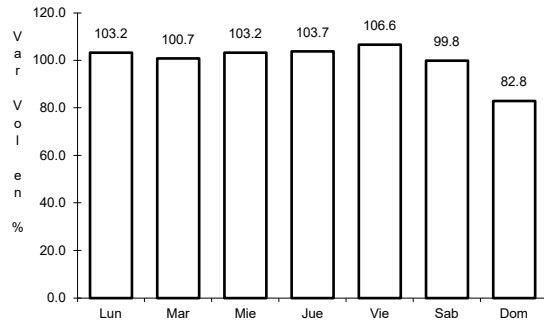
Km: 7.50      Tipo: 1      Sent: 2

Km: 256.00      Tipo: 1      Sent: 0

26 CARR: Villahermosa - Escopetazo

CLAVE: 00104

ruta: MEX-195



Km: 0.00      Tipo: 3      Sent: 1

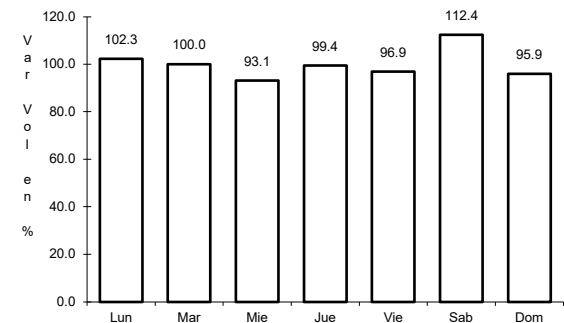
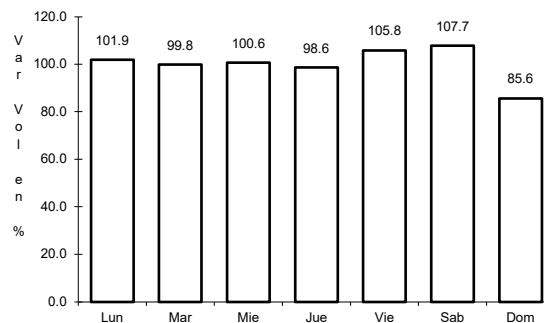
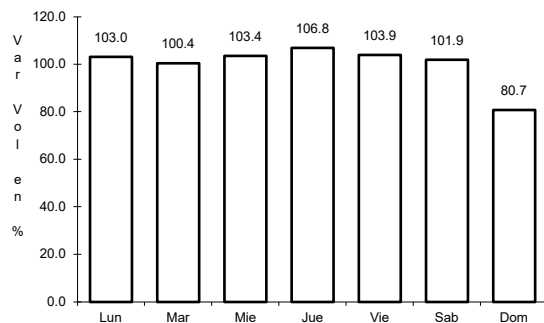
Km: 0.00      Tipo: 3      Sent: 2

Km: 259.00      Tipo: 1      Sent: 0

27 CARR: Villahermosa - Francisco Escárcega

CLAVE: 00092

ruta: MEX-186-307



Km: 0.00      Tipo: 3      Sent: 1

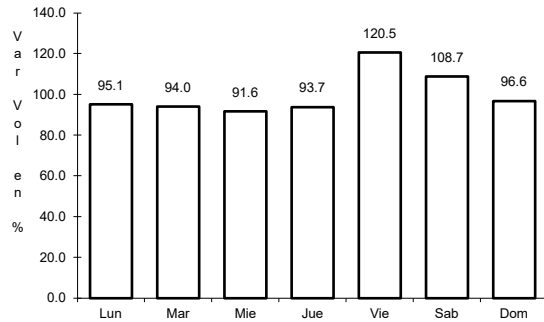
Km: 0.00      Tipo: 3      Sent: 2

Km: 297.04      Tipo: 1      Sent: 0

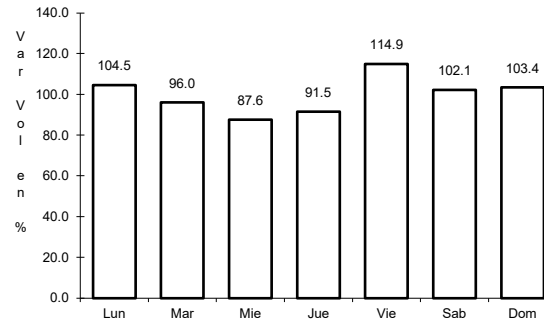
28 CARR: Arriaga - Ocozocoautla (Cuota)

CLAVE: 00092

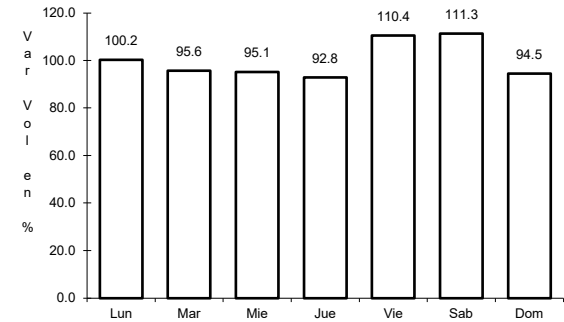
ruta: MEX-200D



Km: 0.00                      Tipo: 3                      Sent: 0



Km: 20.30                      Tipo: 1                      Sent: 0

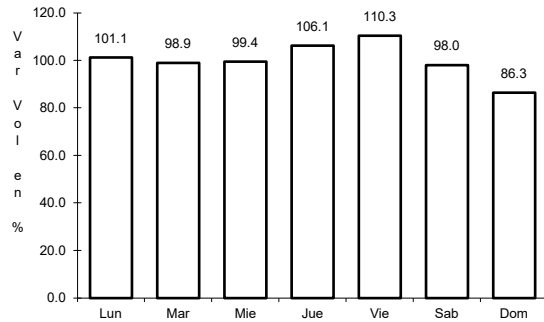


Km: 92.00                      Tipo: 1                      Sent: 0

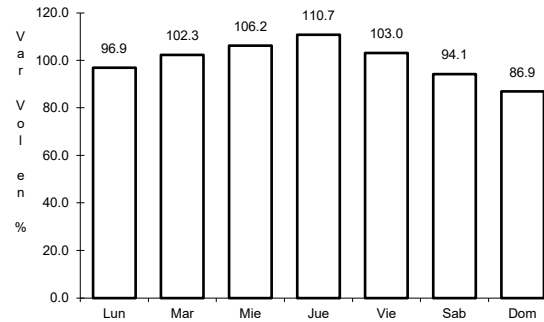
29 CARR: Las Choapas - Ocozocoautla (Cuota)

CLAVE: 00077

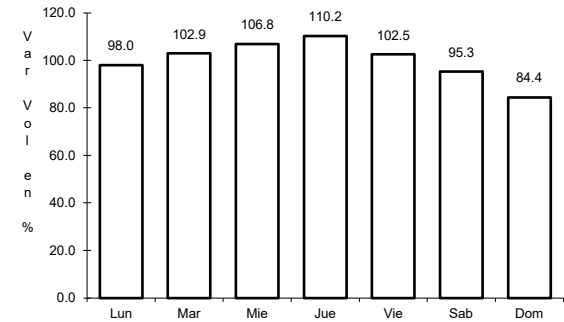
ruta: MEX-187D



Km: 0.00                      Tipo: 3                      Sent: 0



Km: 123.79                      Tipo: 1                      Sent: 0

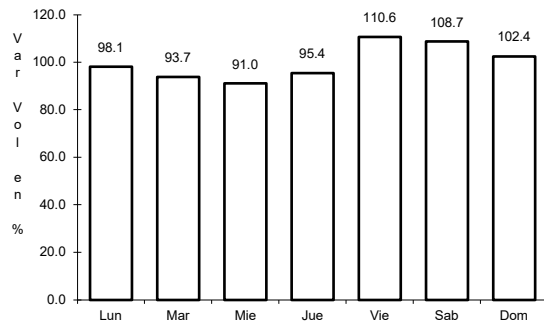


Km: 197.50                      Tipo: 1                      Sent: 0

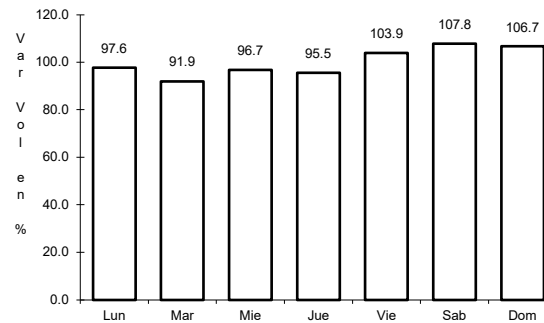
30 CARR: Tuxtla Gutiérrez - San Cristóbal de Las Casas (Cuota)

CLAVE: 07580

ruta: MEX-190D



Km: 1.30                      Tipo: 3                      Sent: 0

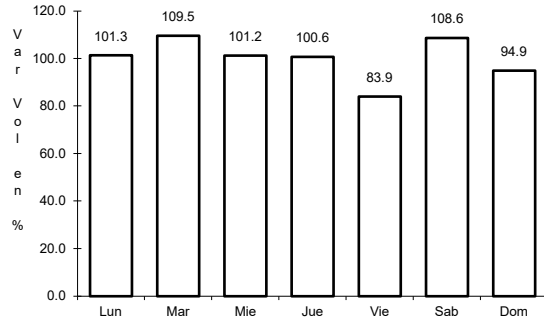


Km: 46.00                      Tipo: 1                      Sent: 0

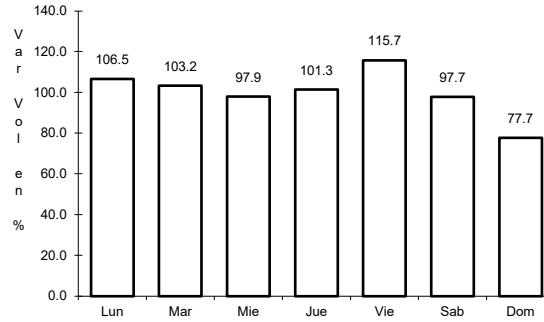
31 CARR: Chiapa de Corzo - Amatenango del Valle

CLAVE: 07024

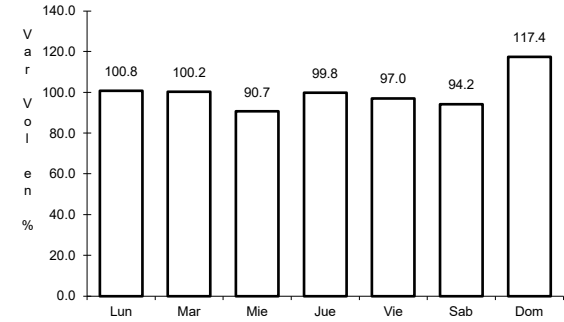
ruta: CHIS



Km: 0.00      Tipo: 3      Sent: 0



Km: 74.00      Tipo: 1      Sent: 0

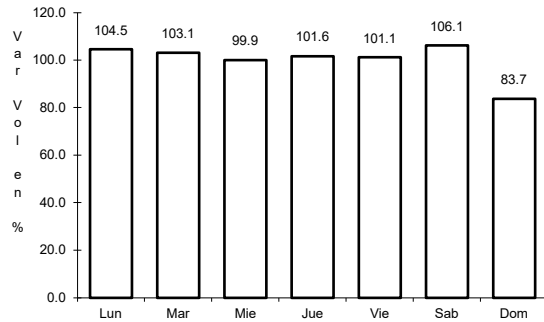


Km: 146.50      Tipo: 1      Sent: 0

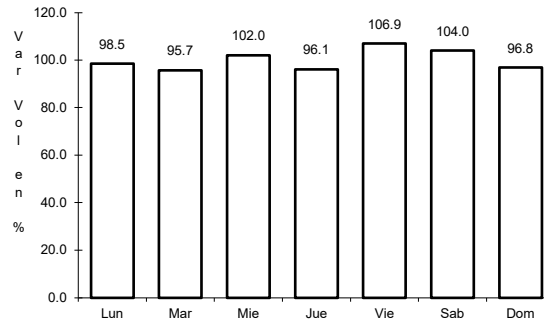
32 CARR: Ent. Emiliano Zapata - La Libertad

CLAVE: 00062

ruta: CHIS-TAB



Km: 0.00      Tipo: 3      Sent: 0

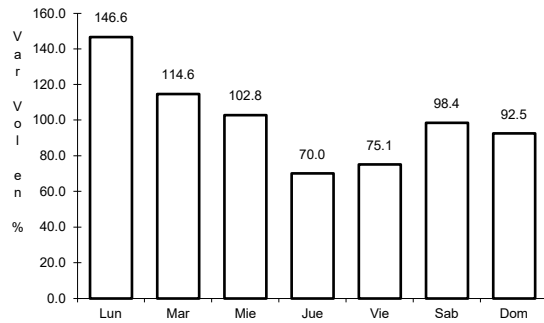


Km: 10.00      Tipo: 1      Sent: 0

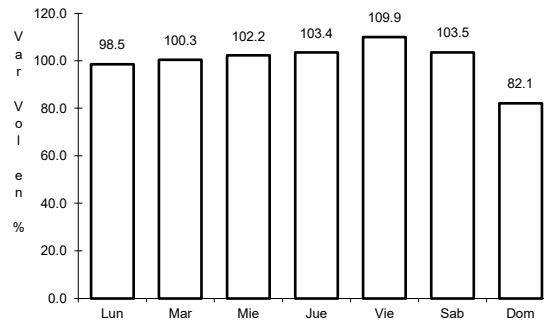
33 CARR: Ent. Suschilá - Comitán

CLAVE: 00061

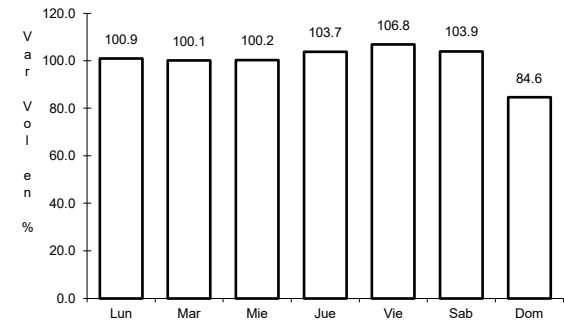
ruta: CHIS-TAB



Km: 205.00      Tipo: 1      Sent: 0



Km: 257.50      Tipo: 3      Sent: 1

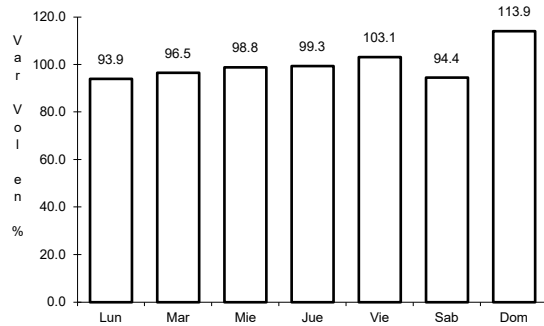


Km: 257.50      Tipo: 3      Sent: 2

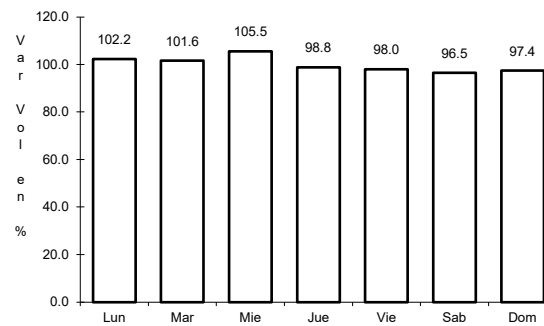
34 CARR: Estación Palenque - La Libertad

CLAVE: 07002

RUTA: CHIS-010



Km: 0.00                      Tipo: 3                      Sent: 0

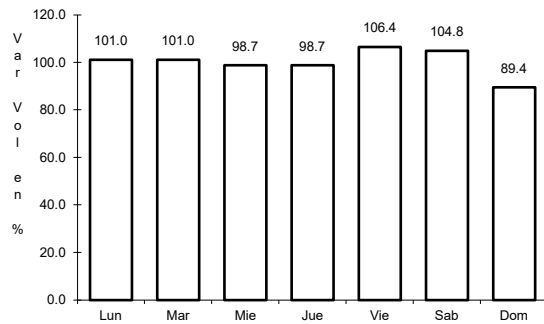


Km: 40.00                      Tipo: 1                      Sent: 0

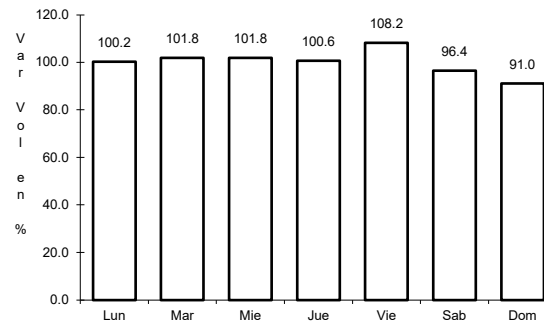
35 CARR: Gregorio Méndez Magaña - Reforma de Ocampo

CLAVE: 00103

RUTA: CHIS



Km: 0.00                      Tipo: 3                      Sent: 0

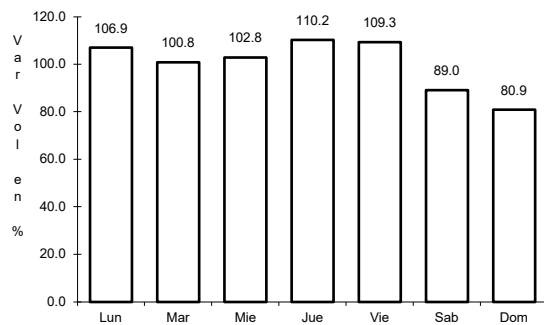


Km: 21.00                      Tipo: 1                      Sent: 0

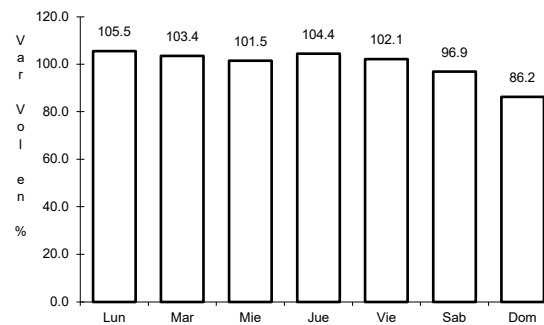
36 CARR: Independencia - Buenos Aires

CLAVE: 07098

RUTA: CHIS



Km: 139.00                      Tipo: 3                      Sent: 0

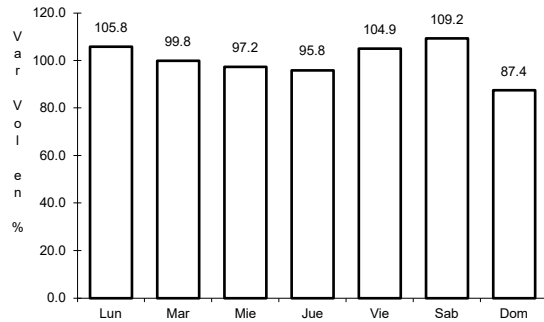


Km: 159.00                      Tipo: 1                      Sent: 0

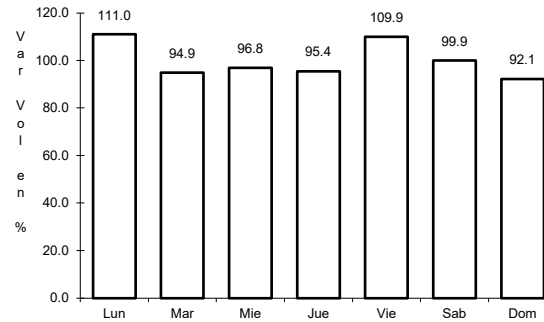
37 CARR: Las Limas - La Concordia

CLAVE: 07028

ruta: CHIS



Km: 0.00      Tipo: 3      Sent: 0

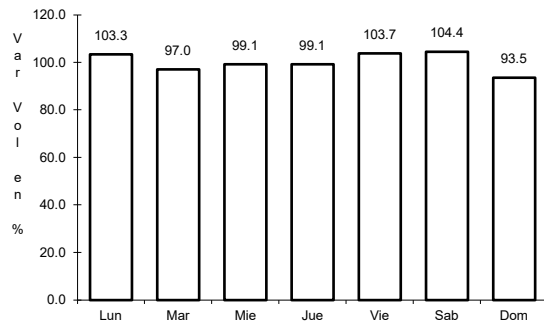


Km: 83.00      Tipo: 1      Sent: 0

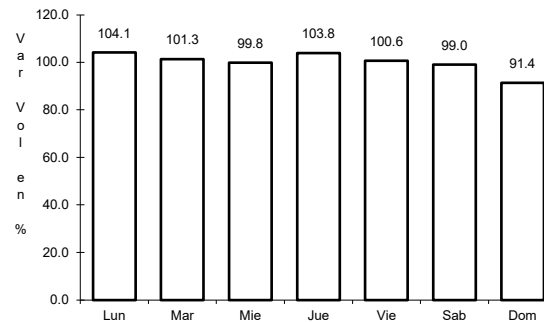
38 CARR: Libramiento Sur de Tuxtla Gutiérrez

CLAVE: 07578

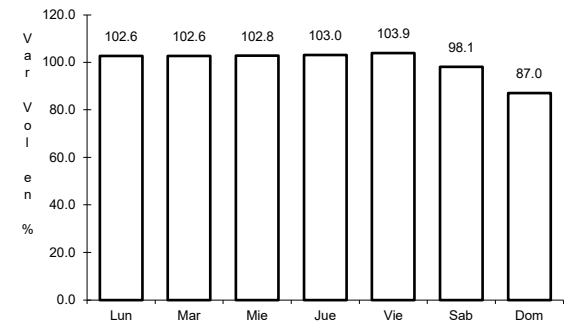
ruta: CHIS



Km: 0.00      Tipo: 3      Sent: 1



Km: 0.00      Tipo: 3      Sent: 2

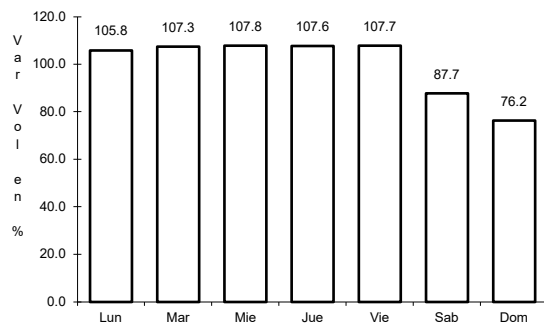


Km: 9.20      Tipo: 1      Sent: 1

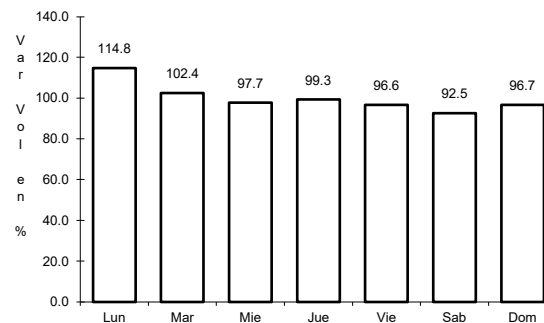
39 CARR: Ocosingo - Comitán

CLAVE: 07092

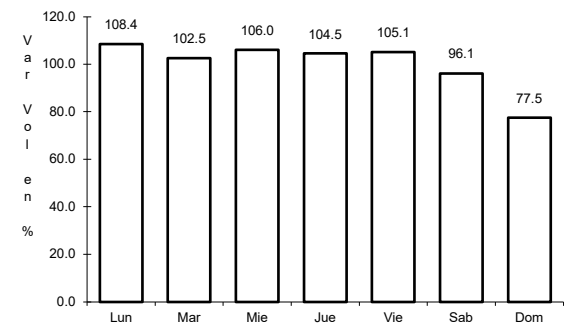
ruta: CHIS



Km: 0.00      Tipo: 3      Sent: 0



Km: 30.00      Tipo: 1      Sent: 0

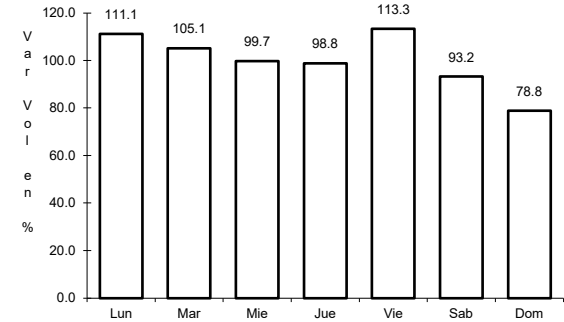
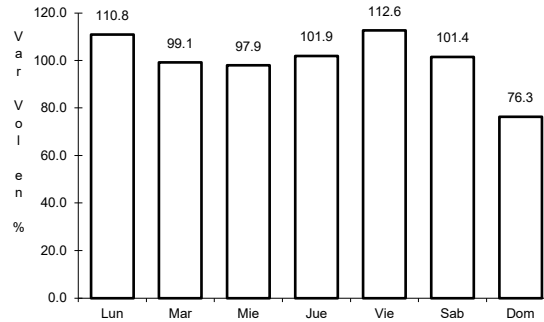
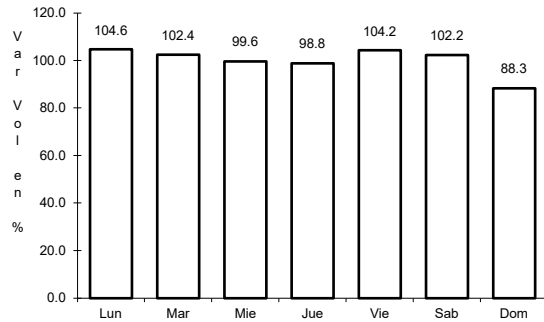


Km: 100.00      Tipo: 1      Sent: 0

40 CARR: Ocozocoautla - Revolución Mexicana

CLAVE: 07571

ruta: CHIS-053-230



Km: 0.00 Tipo: 3 Sent: 0

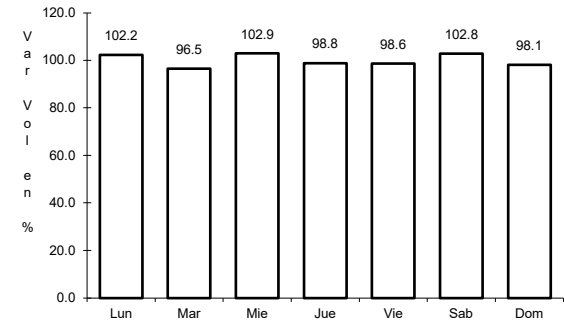
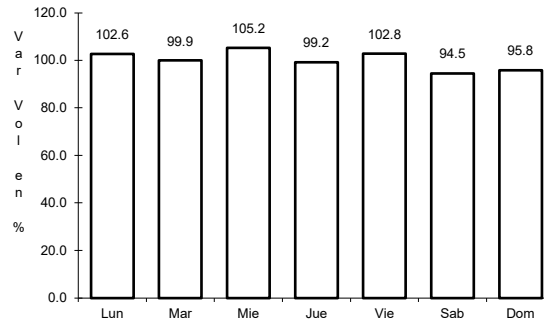
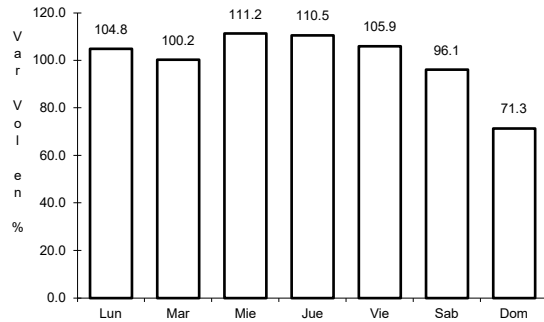
Km: 58.60 Tipo: 1 Sent: 0

Km: 103.00 Tipo: 1 Sent: 0

41 CARR: Paso de Cunduacán - Estación Juárez

CLAVE: 00588

ruta: TAB-CHIS



Km: 0.00 Tipo: 3 Sent: 0

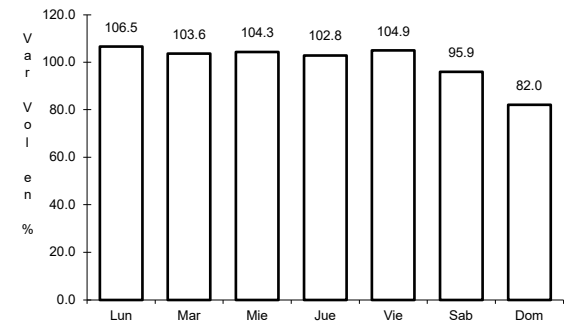
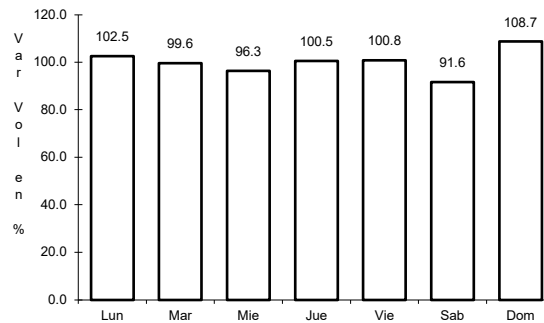
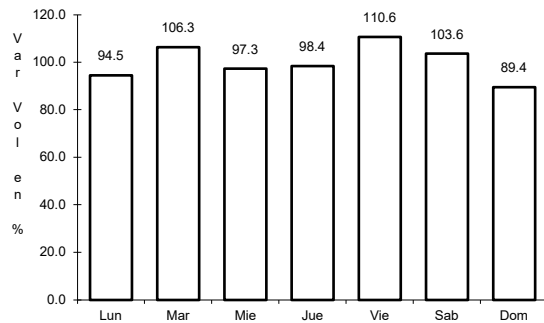
Km: 18.00 Tipo: 3 Sent: 0

Km: 57.80 Tipo: 1 Sent: 0

42 CARR: Puerto Caté - San Cristóbal de Las Casas

CLAVE: 07097

ruta: CHIS



Km: 0.00 Tipo: 3 Sent: 0

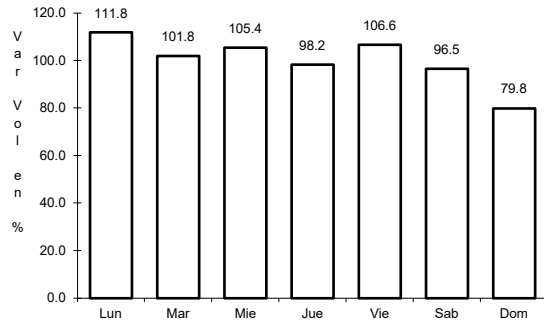
Km: 20.00 Tipo: 1 Sent: 0

Km: 40.00 Tipo: 1 Sent: 0

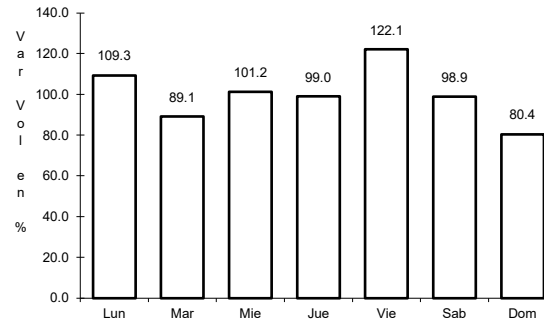
43 CARR: Ramal a Huchuetán

CLAVE: 07360

ruta: CHIS



Km: 0.00                      Tipo: 3                      Sent: 1

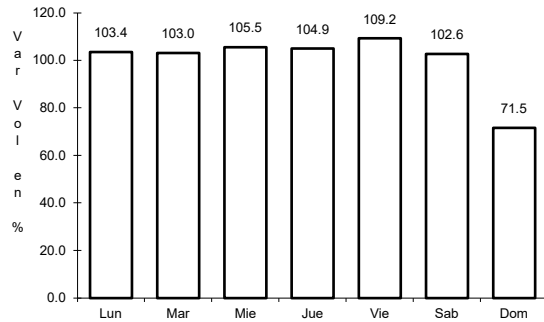


Km: 0.00                      Tipo: 3                      Sent: 2

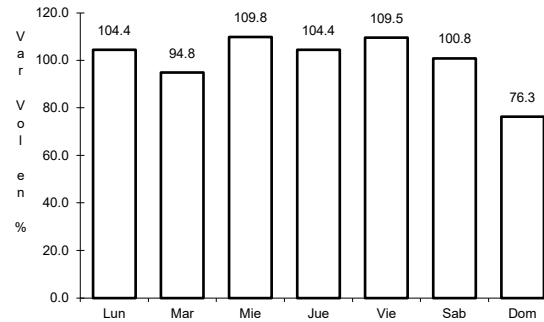
44 CARR: Ramal a Mazatán

CLAVE: 07560

ruta: CHIS-219



Km: 0.00                      Tipo: 3                      Sent: 1

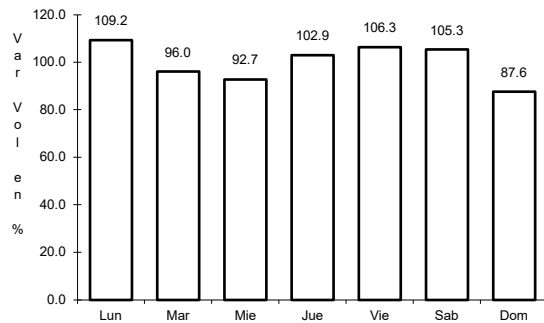


Km: 0.00                      Tipo: 3                      Sent: 2

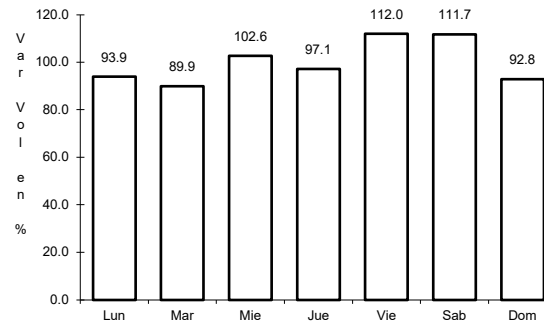
45 CARR: Ramal a Salto del Agua

CLAVE: 00069

ruta: TAB-CHIS



Km: 0.00                      Tipo: 3                      Sent: 0

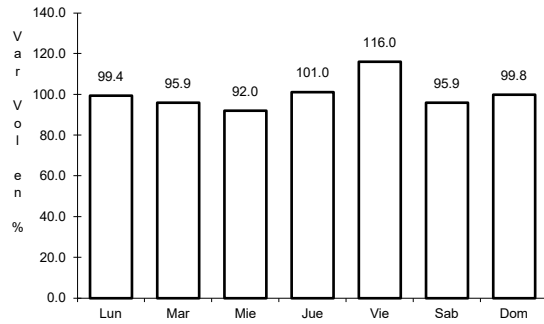


Km: 17.00                      Tipo: 1                      Sent: 0

46 CARR: Ramal Zona Arqueológica " Bonampak "

CLAVE: 07100

RUTA: CHIS



Km: 0.00

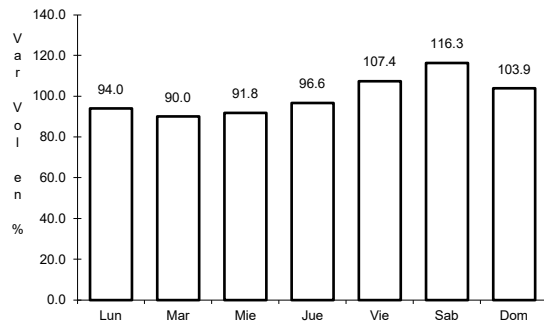
Tipo: 3

Sent: 0

47 CARR: Ramal Zona Arqueológica " Palenque "

CLAVE: 07099

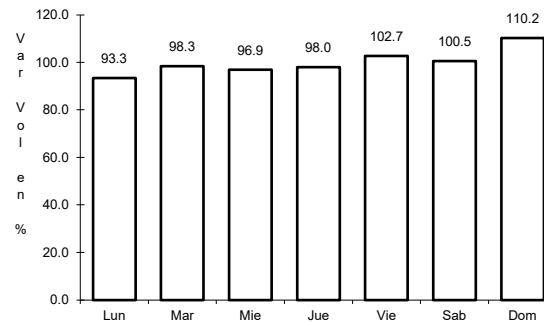
RUTA: CHIS



Km: 0.00

Tipo: 3

Sent: 0



Km: 7.30

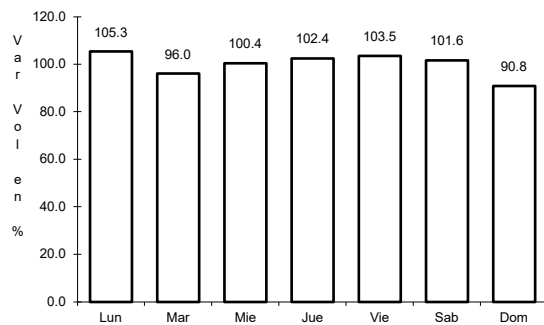
Tipo: 1

Sent: 0

48 CARR: San Francisco Pujilic - Ent. Comitán

CLAVE: 07093

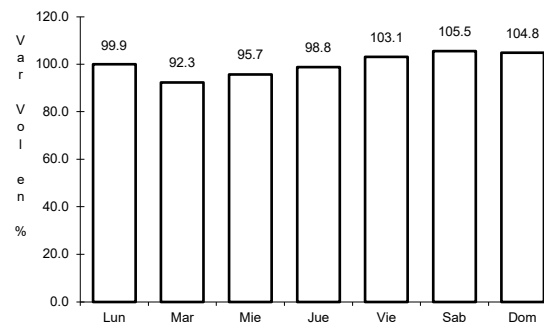
RUTA: CHIS



Km: 0.00

Tipo: 3

Sent: 0



Km: 54.00

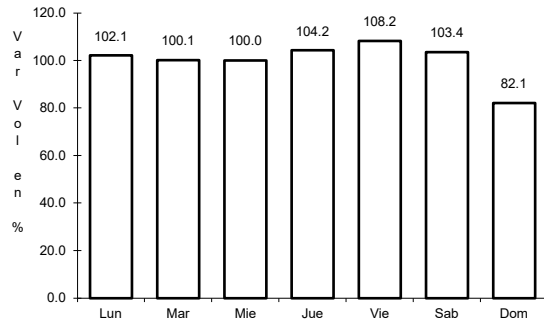
Tipo: 1

Sent: 0

49 CARR: Tapachula - Nueva Alemania

CLAVE: 07581

ruta: CHIS-229



Km: 0.00

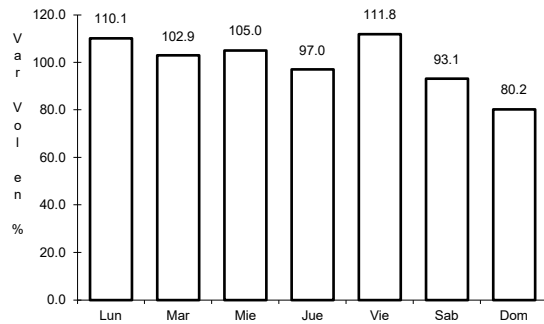
Tipo: 3

Sent: 0

50 CARR: Temo - Tila

CLAVE: 07090

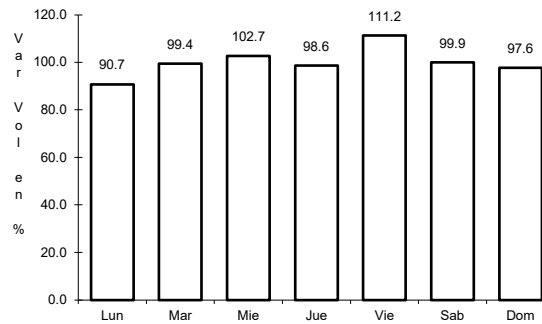
ruta: CHIS



Km: 0.00

Tipo: 3

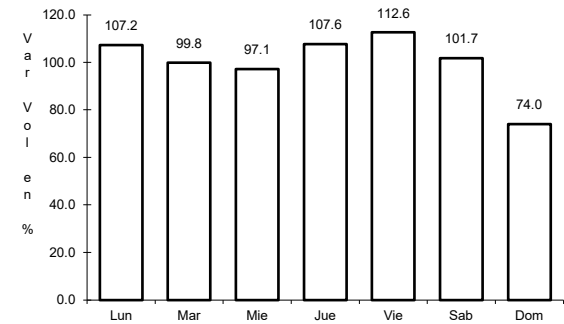
Sent: 0



Km: 28.00

Tipo: 1

Sent: 0



Km: 50.00

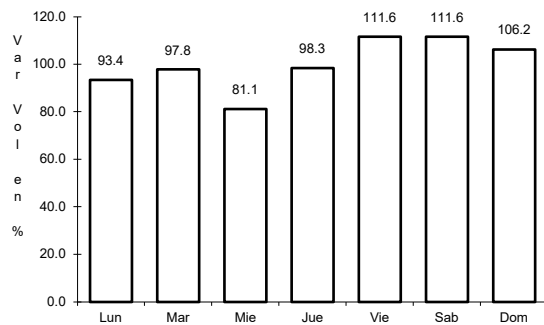
Tipo: 1

Sent: 0

51 CARR: Tierra y Libertad - Ent. Dr. Domingo Chanona

CLAVE: 07096

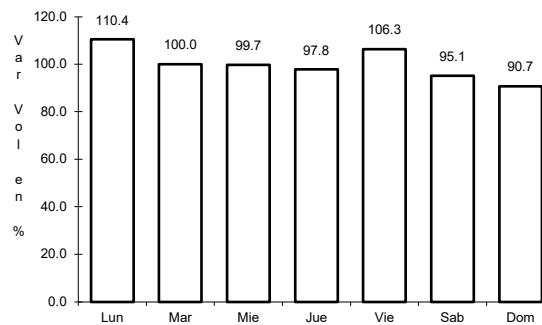
ruta: CHIS



Km: 0.00

Tipo: 3

Sent: 0



Km: 60.00

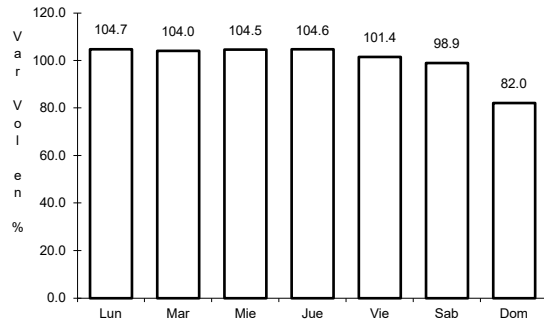
Tipo: 1

Sent: 0

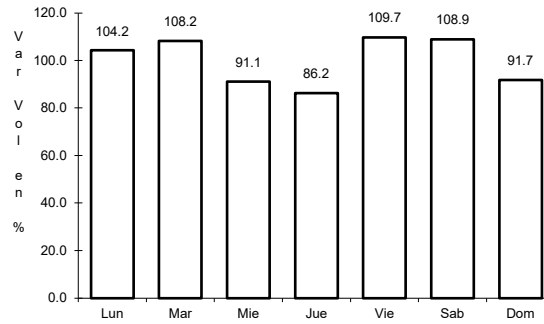
52 CARR: Tuxtla Gutiérrez - Portillo Zaragoza

CLAVE: 07574

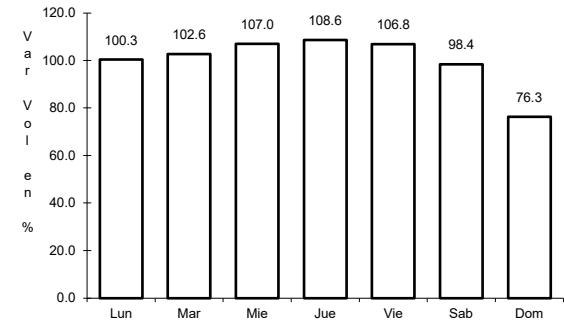
ruta: CHIS-133



Km: 0.00                      Tipo: 3                      Sent: 0



Km: 53.50                      Tipo: 1                      Sent: 0

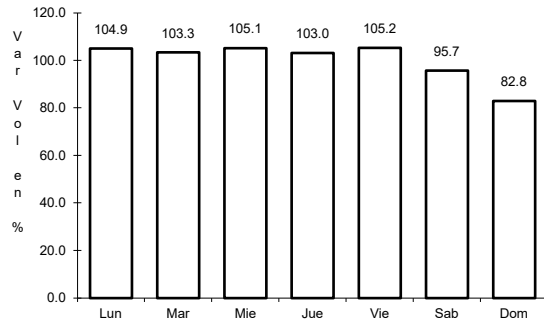


Km: 79.00                      Tipo: 1                      Sent: 0

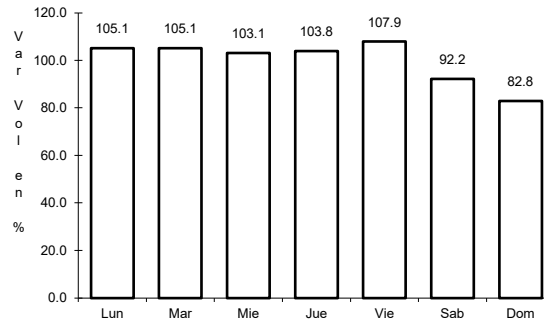
53 CARR: Zapatero - T. C. (Jalapa - Jonuta)

CLAVE: 00061

ruta: CHIS-TAB



Km: 0.00                      Tipo: 3                      Sent: 0



Km: 41.00                      Tipo: 1                      Sent: 0